

# Apartment Enael

Region: Portugal    Sleeps: 4

---

## Overview

Nestled in the very heart of downtown Lisbon, just a minute's stroll from the bustling Rua Augusta and only five minutes from the iconic Praça do Comércio, Apartment Enael welcomes you to a charming retreat in a beautifully restored building. As you step inside, you will immediately feel at ease, surrounded by modern comforts in a setting that effortlessly blends contemporary style with homely warmth.

Let's start with the bedrooms. You will find two elegant en-suite bedrooms, each featuring a queen-sized bed fitted with plush bedding and a generous supply of pillows. The air conditioning will keep you cool and comfortable whether you are visiting in the heat of summer or during the mild winter. The en-suite bathrooms are thoughtfully designed and stocked with all the essentials you might need, from fluffy towels to a selection of toiletries, including shampoo, conditioner, and body lotion.

Moving into the living space, you will be pleased to discover a spacious area designed with relaxation in mind. Sink into the comfortable sofa and catch up on your favourite shows with cable TV, or simply unwind after a day of exploring Lisbon's vibrant streets. A dining table for four provides a cosy spot to enjoy breakfast or an evening meal, adding a touch of home to your travel experience.

The kitchenette is compact but fully equipped, perfect for preparing everything from a quick snack to a more elaborate meal. With appliances including a stove, microwave oven, refrigerator, toaster, dishwasher, and coffee machine, you'll have everything you need at your fingertips.

Outside, the city is yours to explore. The historic Santa Justa Elevator is just around the corner, offering



spectacular views over the city, while the lively atmosphere of Rua Augusta and the grand Praça do Comércio are just moments away.

Apartment Enael offers a perfect blend of comfort and convenience in one of Lisbon's most desirable locations.

Whether you are here for a short city break or a more extended stay, this charming abode provides a welcoming base for your adventures.

## Facilities

Air-Con • TV • City Homes & Apartments • Coffee Machine • Hairdryer • Historical Sites • Wi-Fi/Internet • Lift • Laptop Friendly Workspace • Wow Factor • Ideal for Babies & Toddlers • Ideal for Kids • <1hr to Airport • Dishwasher • Microwave • High Chair(s) • Outstanding Landscapes • Tourist Towns & Villages

# Interior & Grounds

## The Apartment

### *Interior*

**Living Room:** A spacious area with a comfortable sofa, cable TV, and air conditioning, perfect for relaxation.

**Dining Area:** Located within the living room, with a dining table that seats up to four people.

**Kitchenette:** Fully equipped with a stove, microwave, refrigerator, toaster, dishwasher, coffee machine, and other necessary appliances.

**Bedroom 1:** Queen-sized bed, en-suite bathroom and air conditioning.

**Bedroom 2:** Queen-sized bed, en-suite bathroom and air conditioning.

### **Additional Facilities**

Wi-Fi

TV

Air Conditioning

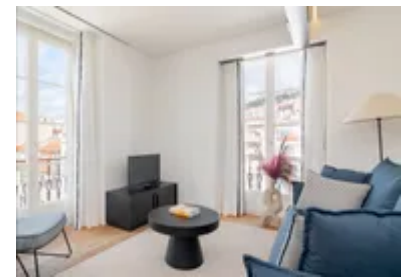
Balcony / Terrace

Toiletry kit

Hair dryer

Iron

Cable TV



# Location & Local Information

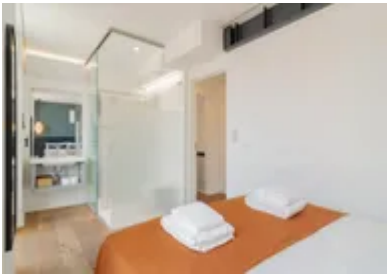
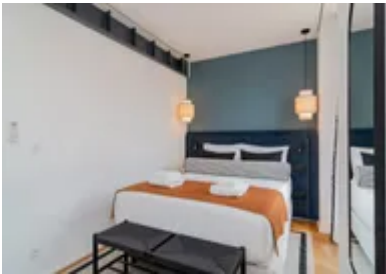
Apartment Enael is ideally situated in the heart of downtown Lisbon, making it an excellent base for exploring the city. Located on the same street as the famed Santa Justa Elevator, you will be just a minute's walk from the bustling Rua Augusta, one of Lisbon's main thoroughfares. This area is renowned for its vibrant atmosphere, lined with shops, cafes, and restaurants.

A short five-minute stroll will lead you to Praça do Comércio, an expansive and historic square facing the Tagus River. This landmark is perfect for leisurely walks and offers stunning views of the river and the city's architectural splendour.

The apartment's central location also provides easy access to public transportation, including trams and buses, facilitating convenient exploration of other parts of Lisbon. Whether you are interested in cultural landmarks, shopping, or dining, the prime position of Apartment Enael places you right in the midst of Lisbon's lively and historic heart.

## Local Amenities

Nearest Airport	Humberto Delgado Airport (9 km)
Nearest Supermarket	SuperMarket (120 m)
Nearest Train Station	Rossio (170 m)
Sightseeing	Santa Justa Lift (110 m)
Sightseeing	Carmo Archaeological Museum (500 m)
Sightseeing	Arco da Rua Augusta (500 m)



## What we love

- Just a minute from Rua Augusta and steps from the Santa Justa Elevator—perfect for city explorers!
- You will immediately feel at ease, surrounded by modern comforts in a setting that effortlessly blends contemporary style with homely warmth
- Enjoy two en-suite bedrooms with plush queen-sized beds offering everyone their own privacy

## What you should know...

- Train, bus, metro, taxi and tram stops are right around the corner
- Be kind to your neighbours and please avoid making noise after 22h as this is a residential building (Noise is prohibited from 22h until 8h in the morning as per the law in Portugal)
- All windows and doors must be closed when leaving the apartment or during rainfall

# Terms & Conditions

- **Security deposit:** Oliver's Travels to charge €200 to client's credit card before arrival and refunded two weeks after departure, subject to full site inspection.
- **Arrival time:** 15:00 - 23:00
- **Departure time:** 11:00
- **Energy costs included?:** Yes, included in the rental price.
- **Linen & towels included?:** Yes, included in the rental price.
- **Pets welcome?:** No pets allowed.
- **End of stay cleaning available?:** Yes. However, guests are required to leave the accommodation clean, tidy and in the same condition as on their arrival. Any extra cleaning, laundry, maintenance and/or rubbish disposal required will be charged against the security deposit.
- **Smoking Allowed?:** Smoking & Vaping are not permitted.
- **Minimum stay:** 2 nights.
- **Heating costs included?:** Yes, included in the rental price.
- **Tax:** Tourist Tax is included in the rental price.
- **Internet access?:** Wi-Fi internet access included.
- **Stag & Hen Do Allowed? :** Weddings, stag/hen parties and any special events are not allowed.