

# Apartment Sodre

Region: Lisbon Sleeps: 6

---

## Overview

Nestled in the vibrant Santos neighbourhood, just a stone's throw away from downtown, Apartment Sodre offers the perfect blend of convenience and comfort. The area is brimming with character, with easy access to public transport and a myriad of cafes, shops, and cultural spots right at your doorstep. The building itself is a true gem, its beautifully restored facade adorned with traditional Portuguese tiles, setting the tone for the charm that awaits within.

As you step into the apartment, you are immediately greeted by a warm and welcoming atmosphere. The interiors have been thoughtfully designed, featuring a blend of modern elegance and timeless comfort. The living room is a cosy retreat, complete with a comfortable sofa bed and a dining area. Whether you are relaxing with a good book or catching up on your favourite shows on the cable TV, this space is designed for you to unwind. The addition of a Marshall sound system ensures your favourite tunes in high-quality sound accompany your stay.

The kitchen is a delight for anyone who enjoys cooking or simply likes to have the option. Fully equipped with modern appliances, including a Nespresso machine for those morning coffees, it has everything you need to whip up a meal or a quick snack. The space is practical yet stylish, making it a pleasure to use.

The apartment features two inviting bedrooms. The master bedroom boasts a king-sized bed, complete with plush linens and oversized pillows, ensuring a restful night's sleep. There is also a desk, perfect for catching up on work, and air conditioning to keep you comfortable. The second bedroom is equally charming, offering a queen-sized bed and a small balcony that floods the room



with natural light.

Step outside to discover the local delights of Santos or enjoy the outdoor spaces that surround the building. Whether you're here to explore the city or simply relax, Apartment Sodre offers a delightful retreat in one of Lisbon's most cosmopolitan districts.

## Facilities

Air-Con • City Homes & Apartments • Historical Sites • Special Offer • Has Discount • Wow Factor • <1hr to Airport • Walk to Restaurant • Wi-Fi/Internet • Easy By Train • Washing Machine • Coffee Machine • Hairdryer • Tourist Towns & Villages • TV • Laptop Friendly Workspace • Dishwasher • Microwave

# Interior & Grounds

## The Apartment

### Ground Floor

- Living Room: Features a comfortable sofa bed, dining area, cable TV, and Marshall sound system.
- Kitchen: Fully equipped with modern appliances including a stove, oven, microwave, refrigerator, Nespresso machine, toaster, dishwasher, and washing machine.
- Bathroom: Equipped with a shower, quality mirror, and toilet, and provided with a hairdryer, towels, toilet paper, shampoo, conditioner, and hand soap.
- Master Bedroom: King-sized bed, oversized pillows, comfortable linens, a desk with a chair, and air conditioning.
- Second Bedroom: Queen-sized bed, oversized pillows, comfortable linens, air conditioning, and a small balcony for natural light.

### Mezzanine

- Sitting Area: Ideal for relaxation or casual conversations, with a cosy atmosphere and dimmer lighting.

### Exterior

- Small balcony

### Additional Facilities

- Wi-Fi
- TV
- Air Conditioning
- Toiletry kit
- Hair dryer
- Hangers
- Iron
- Washing machine
- Cable TV



## Location & Local Information

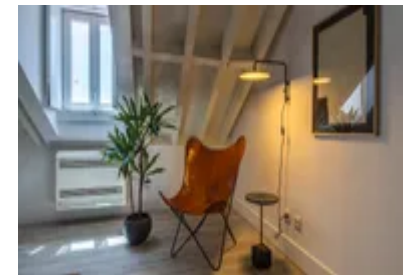
Apartment Sodre is ideally situated in Lisbon's dynamic and culturally rich Santos district, making it an excellent holiday destination. Known as the city's "Design District," Santos is a hub of creativity and innovation, where modern design studios and galleries coexist with historic architecture. The area offers a unique blend of old and new, with beautifully restored buildings, like the one housing Apartment Sodre, adorned with traditional Portuguese tiles.

The apartment's location, just a short distance from downtown Lisbon, provides easy access to the city's most famous attractions. The iconic Praça do Comércio, the bustling Baixa district, and the historic neighbourhood of Alfama are all within reach. The nearby Tagus River offers picturesque views and pleasant walks along the waterfront.

Santos is also well-connected by public transport, with tram, bus, and train services close by, allowing you to explore Lisbon and beyond easily. Additionally, the area is filled with trendy cafes, restaurants, and boutiques, providing plenty of options for dining, shopping, and experiencing the local culture. Apartment Sodre's location ensures a vibrant and convenient base for any holiday.

### Local Amenities

Nearest Airport	<b>Humberto Delgado Airport</b> (10 km)
Nearest Train Station	<b>Santos</b> (550 m)
Nearest Supermarket	<b>MADRAGOA MINIMERCADO &amp; FRUTARIA</b> (120 m)
Sightseeing	<b>Arco da Rua Augusta</b> (2 km)
Sightseeing	<b>Santa Justa Lift</b> (2 km)





## What we love

- Enjoy the blend of modern comforts and historic charm with high-speed Wi-Fi, a Marshall sound system, and traditional Portuguese tiles
- Relax in stylish bedrooms with king and queen-sized beds, each featuring quality linens and air conditioning
- Explore the lively Santos district, filled with cafes, galleries, and easy access to Lisbon's top attractions

## What you should know...

- Be kind to your neighbours and please avoid making noise after 22h as this is a residential building (Noise is prohibited from 22h until 8h in the morning as per the law in Portugal)
- All windows and doors must be closed when leaving the apartment or during rainfall
- Events or gatherings of any kind are not allowed

# Terms & Conditions

- **Arrival time:** 15:00 - 19:00

- **Departure time:** 11:00

- **Energy costs included?:** Yes, included in the rental price.

- **Linen & towels included?:** Yes, included in the rental price.

- **Pets welcome?:** No pets allowed.

- **Other Ts and Cs:** Arrival information will be sent 24 hours prior to check-in.

- **End of stay cleaning:** Standard changeover clean included in the price. Guests are required to leave the accommodation clean, tidy and in the same condition as on their arrival. Any extra cleaning, laundry, maintenance and/or rubbish disposal required will be charged against the security deposit.

- **Smoking Allowed?:** Smoking & Vaping are not permitted.

- **Minimum stay:** 2 nights.

- **Heating costs included?:** Yes, included in the rental price.

- **Tax:** Tourist Tax is included in the rental price.

- **Internet access?:** Wi-Fi internet access included.

- **Stag & Hen Do Allowed? :** Weddings, stag/hen parties and any special events are not allowed.