

Apartment Teodoro

Region: Portugal Sleeps: 6

Overview

Apartment Teodoro is nestled in the heart of Lisbon's charming Baixa district. As you step out of the bustling streets and into this inviting haven, you will immediately appreciate the blend of classic charm and modern convenience that defines this unique spot. The apartment is housed in a beautifully preserved Pombaline building, with its classic façade offering a glimpse into Lisbon's rich architectural history.

Walking through the front door, you will find yourself enveloped in a warm and stylish atmosphere. The recent renovation has thoughtfully combined high-quality materials with a design that prioritises both comfort and functionality. The spacious living area is perfect for unwinding after a day of exploring, featuring plush seating, an air conditioning and heating system to keep things just right, and a Marshall sound system that sets the mood with your favourite tunes. The smart TV, equipped with Chromecast, is ready for cosy movie nights or catching up on your favourite shows.

The apartment comfortably accommodates up to six guests, with a restful Queen bed in each room and a handy sofa bed for additional flexibility. Each room is a serene retreat designed to make you feel right at home. The two bathrooms are elegantly appointed, with top-quality fixtures ensuring a refreshing start or end to your day.

The kitchenette is a delightful space for those who enjoy a bit of culinary creativity. Outfitted with high-end appliances, it is well-equipped to handle everything from a simple breakfast to a gourmet dinner. And when it is time to eat, the dining area provides a charming setting for meals with loved ones.

Outside, the apartment's charm continues with a space



designed to enhance your experience of Lisbon. The apartment's location places you right in the heart of Baixa, making it easy to explore the neighbourhood's rich history, vibrant culture, and delightful cuisine.

Whether you are here for a short getaway or a longer stay, Apartment Teodoro offers a blend of historical elegance and modern comfort, ensuring a memorable experience in one of Lisbon's most iconic districts.

Facilities

Air-Con • Washing Machine • City Homes & Apartments • Coffee Machine • Hairdryer • Historical Sites • Wi-Fi/Internet • TV • Lift • Wow Factor • Laptop Friendly Workspace • Ideal for Babies & Toddlers • Walk to Restaurant • <1hr to Airport • Tumble Dryer • Dishwasher • Microwave • Smart TV • Tourist Towns & Villages

Interior & Grounds

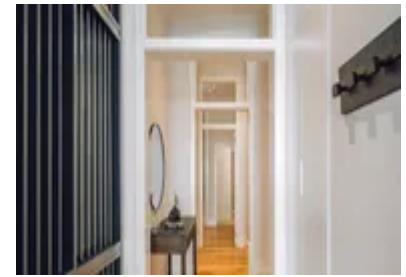
The Apartment

Interior

- Living Area with sofa bed
- Dining Area
- Kitchenette
- Bathroom 1
- Bedroom 1: Queen Bed
- Bedroom 2: Queen Bed
- Bathroom 2

Additional Facilities

- Wi-Fi
- TV
- Air Conditioning
- Balcony / Terrace
- Toiletry kit
- Hair dryer
- Hangers
- Iron
- Washing machine
- Dryer



Location & Local Information

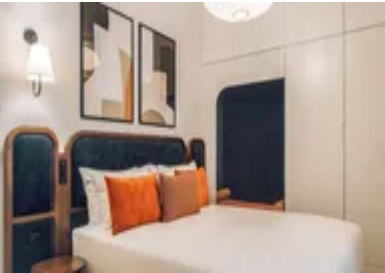
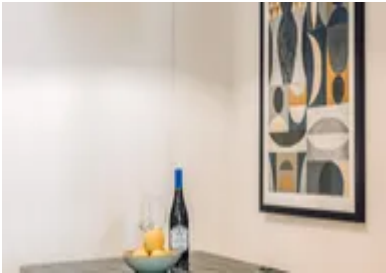
Apartment Teodoro is ideally situated in the heart of Lisbon's historic Baixa district, making it an excellent choice for a holiday destination. Baixa is renowned for its vibrant atmosphere and rich architectural heritage, offering visitors a unique blend of tradition and modernity. As Lisbon's central business district, it boasts wide, tree-lined boulevards and grand squares such as Praça do Comércio and Rossio Square, which are just a short stroll away from the apartment.

This central location provides easy access to a variety of attractions, including historic landmarks, charming boutiques, and a diverse array of dining options. The nearby Rua Augusta, a bustling pedestrian street, is perfect for leisurely shopping and people-watching. Additionally, the neighbourhood's well-connected public transport system makes further exploration of the field straightforward.

Baixa's blend of historical charm and contemporary convenience ensures that guests of Apartment Teodoro can enjoy both cultural experiences and modern amenities, making it an ideal base for discovering the vibrant city of Lisbon.

Local Amenities

Nearest Airport	Humberto Delgado Airport (7 km)
Nearest Train Station	Rossio (400 m)
Nearest Supermarket	FAIZA Mini Mercado (4 m)
Sightseeing	Lisbon Cathedral (350 m)
Sightseeing	Santa Justa Lift (450 m)
Sightseeing	Arco da Rua Augusta (450 m)



What we love

- Immerse yourself in Lisbon's lively Baixa district, with historic landmarks, vibrant shopping, and dining just steps away
- Enjoy a stylish space with top-notch amenities, including a fully equipped kitchenette, air conditioning, and a high-speed internet connection
- Perfect for groups or couples, featuring cosy Queen beds, a sofa bed, and elegant bathrooms for a relaxing stay

What you should know...

- Please note that although the building has an elevator, it is necessary to use the stairs to reach the apartment door
- Be kind to your neighbours and please avoid making noise after 22h as this is a residential building (Noise is prohibited from 22h until 8h in the morning as per the law in Portugal)
- All windows and doors must be closed when leaving the apartment or during rainfall

Terms & Conditions

- **Arrival time:** 15:00 - 23:30
- **Departure time:** 11:00
- **Energy costs included?:** Yes, included in the rental price.
- **Linen & towels included?:** Yes, included in the rental price.
- **Pets welcome?:** No pets allowed.
- **Other Ts and Cs:** Arrival information will be sent 24 hours prior to check-in.
- **End of stay cleaning available?:** Yes. However, guests are required to leave the accommodation clean, tidy and in the same condition as on their arrival. Any extra cleaning, laundry, maintenance and/or rubbish disposal required will be charged against the security deposit.
- **Smoking Allowed?:** Smoking & Vaping are not permitted.
- **Minimum stay:** 2 nights.
- **Heating costs included?:** Yes, included in the rental price.
- **Tax:** Tourist Tax is included in the rental price.
- **Internet access?:** Wi-Fi internet access included.
- **Stag & Hen Do Allowed? :** Weddings, stag/hen parties and any special events are not allowed.