

Apartment Silveira

Region: Portugal Sleeps: 6

Overview

Nestled in a prime location, Apartment Silveira offers a delightful blend of comfort and convenience, perfect for your holiday getaway. As you arrive, you will immediately notice the apartment's proximity to local attractions and amenities, just a five-minute walk to Ribeira. Yet, it maintains a serene atmosphere that invites relaxation.

Stepping inside, you are greeted by a bright, airy living area where natural light pours through the windows, creating a warm and welcoming ambience. The open-plan space is thoughtfully designed, with a comfortable sofa beckoning you to unwind, a dining table set for shared meals, and a TV for those cosy evenings. The minimalist decor adds a touch of elegance, making you feel right at home.

The kitchenette is just off the living area and fully equipped with everything you might need during your stay. Whether you are whipping up a quick breakfast or preparing a more elaborate dinner, you will find a microwave, oven, stove, refrigerator, and all the essential appliances at your fingertips. A dishwasher and washing machine ensures that even daily chores are easily handled, leaving you more time to enjoy your holiday.

The apartment boasts three thoughtfully appointed bedrooms, each designed with comfort in mind. Two of the bedrooms feature plush double beds, while the third offers two single beds pushed together, perfect for a family or group of friends. The master bedroom benefits from an ensuite bathroom, adding an extra touch of privacy and convenience. Each room has air conditioning, high-quality mattresses, and soft linens, ensuring a restful night's sleep.

Outside, the space extends to a charming balcony or



terrace, where you can sip your morning coffee or unwind with a glass of wine in the evening. The tranquil setting allows you to soak in the peaceful surroundings, making it easy to forget you are just steps away from the vibrant life of Porto.

Facilities

Air-Con • City Homes & Apartments • Historical Sites • Special Offer • Has Discount • Wow Factor • <1hr to Airport • Walk to Restaurant • Wi-Fi/Internet • Washing Machine • Hairdryer • Tourist Towns & Villages • TV • Lift • Laptop Friendly Workspace • Tumble Dryer • Dishwasher • Microwave

Interior & Grounds

The Apartment

Interior

Ground Floor

- Open-plan living area (includes a sitting area, dining space, and TV)
- Kitchenette
- WC (half bathroom)
- Laundry room

First Floor

- Bedroom 1: Double bed
- Bedroom 2: Double bed
- Bedroom 3: Twin beds with ensuite bathroom
- Bathroom

Additional Facilities

- Wi-Fi
- Air-conditioning
- Elevator
- TV
- Washer and dryer



Location & Local Information

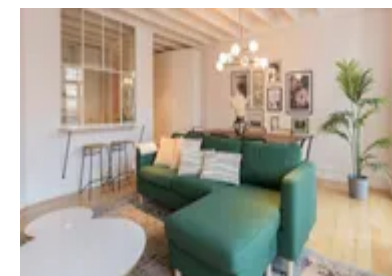
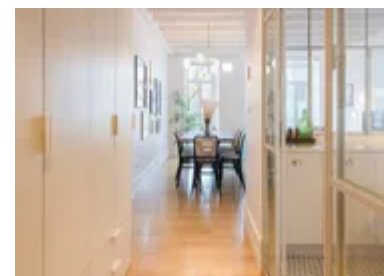
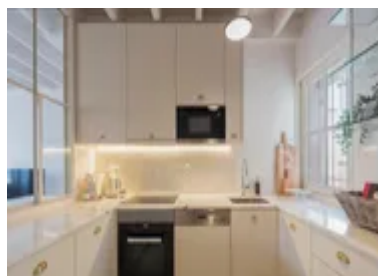
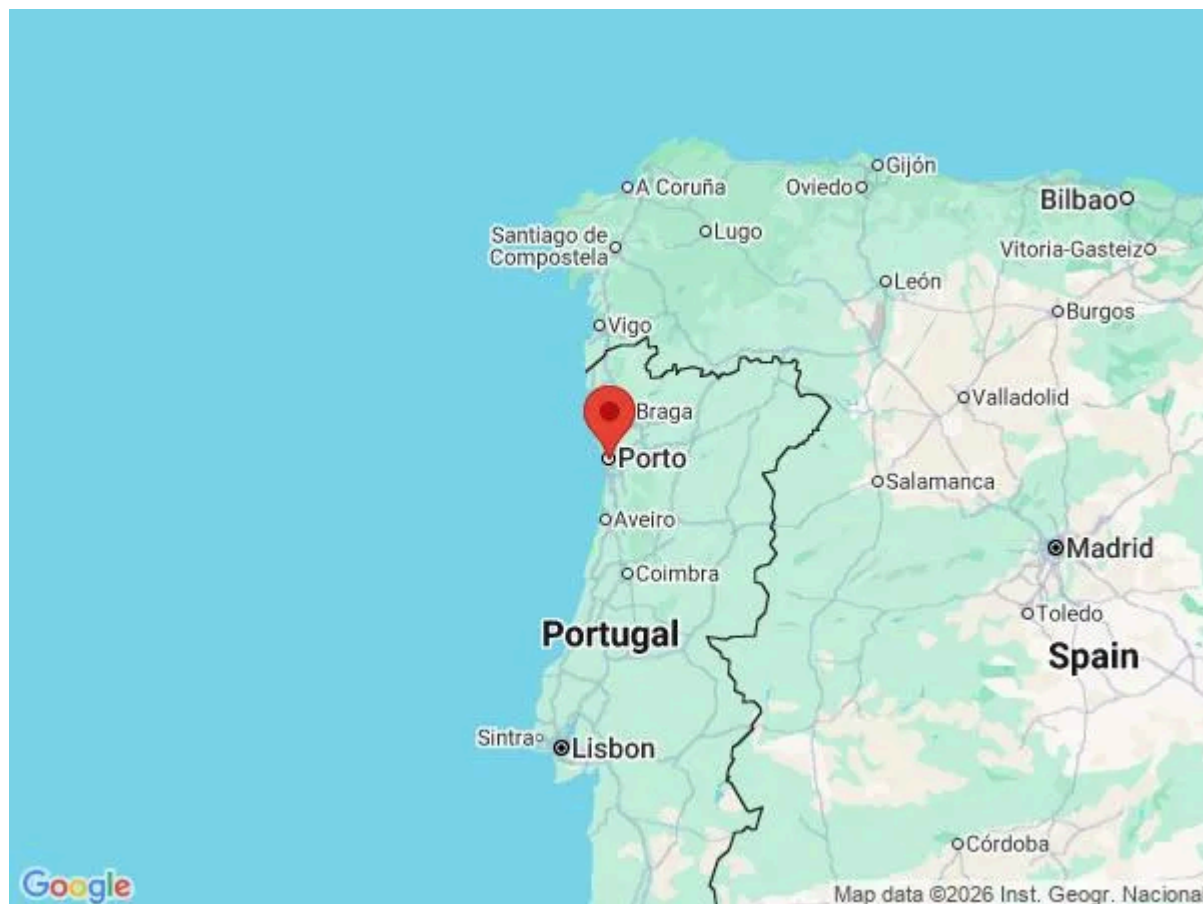
Apartment Silveira is ideally situated in the heart of Porto, just a short five-minute walk from the iconic Ribeira district. Ribeira, a UNESCO World Heritage site, is one of Porto's most vibrant and historic neighbourhoods, renowned for its colourful buildings, narrow cobblestone streets, and lively riverside atmosphere.

Staying at Apartment Silveira means easy access to some of Porto's most famous attractions. A leisurely stroll along the Douro River will lead you to the Dom Luís I Bridge, offering stunning views of the city and its surrounding landscape. The area is brimming with traditional cafes, restaurants, and bars where you can savour authentic Portuguese cuisine, including the famous Francesinha and freshly caught seafood.

Beyond Ribeira, Porto's city centre is within easy reach, offering an array of cultural sites such as the Clérigos Tower, Livraria Lello, and the majestic Porto Cathedral. Whether you are exploring the rich history or indulging in the local wine, Apartment Silveira serves as a perfect base for discovering all that Porto has to offer.

Local Amenities

Nearest Airport	Francisco Sá Carneiro Airport (16 km)
Nearest Supermarket	Queres uma Bolachada? (73 m)
Nearest Train Station	São Bento (300 m)
Sightseeing	Porto Cathedral (250 m)
Sightseeing	Bolsa Palace (350 m)
Sightseeing	Clérigos Church (450 m)



What we love

- Just a five-minute stroll to the vibrant Ribeira district—perfect for sightseeing!
- Bright, airy living space with modern amenities and a cosy feel
- Three comfortable bedrooms, including an ensuite, for a restful stay

What you should know...

- Be kind to your neighbours, and please avoid making noise after 22:00 as this is a residential building (Noise is prohibited from 22:00 until 08:00 in the morning as per the law in Portugal)
- Please take care of the house as if it were your own, keeping it clean and tidy
- Please protect yourself by not leaning over or sitting on the windowsills, balconies or handrails

Terms & Conditions

- **Security deposit:** Oliver's Travels to charge €200 to client's credit card before arrival and refunded two weeks after departure, subject to full site inspection.
- **Arrival time:** 16:00 - 21:00
- **Departure time:** 11:00
- **Energy costs included?:** Yes, included in the rental price.
- **Linen & towels included?:** Yes, included in the rental price.
- **Pets welcome?:** No pets allowed.
- **End of stay cleaning available?:** Yes. However, guests are required to leave the accommodation clean, tidy and in the same condition as on their arrival. Any extra cleaning, laundry, maintenance and/or rubbish disposal required will be charged against the security deposit.
- **Smoking Allowed?:** Smoking & Vaping are not permitted.
- **Minimum stay:** 2 nights.
- **Heating costs included?:** Yes, included in the rental price.
- **Tax:** Portuguese Visitors Tax payable to Oliver's Travels at the time of balance payment (typically costs €1-€10 per adult per night - please enquire if exact amount is required).
- **Internet access?:** Wi-Fi internet access included.
- **Stag & Hen Do Allowed? :** Weddings, stag/hen parties and any special events are not allowed.