

Apartment Ellien

Region: Portugal Sleeps: 4

Overview

Apartment Ellien is nestled in the vibrant heart of Porto on Rua Mouzinho da Silveira, just a stone's throw from the iconic São Bento metro station. As you arrive, you will immediately feel the pulse of the city, with its charming blend of historic grandeur and modern flair. Perfectly positioned, this apartment invites you to immerse yourself in the local culture while enjoying the comfort of a home away from home.

Stepping inside, the apartment greets you with a fresh, clean aesthetic designed to meet your every need. The open-plan living space is bright and welcoming, offering a seamless flow between the kitchenette and the cosy dining area. The kitchenette is thoughtfully equipped with everything you could possibly require, from a stove and microwave to a capsule coffee machine for those early mornings. You will find the essentials like olive oil, salt, and pepper waiting for you, so you can start cooking with ease.

As you move into the bedroom, a sense of calm washes over you. With its plush double bed, the main bedroom promises restful nights, enhanced by crisp, clean linen and large, fluffy pillows. The second bedroom, though an interior room without windows, is equally inviting, providing a quiet retreat from the lively city outside.

The bathroom is modern and spacious, featuring a shower, sink, and all the amenities you might need, including towels, shampoo, and a hair dryer. It is a space designed with your comfort in mind, ensuring you feel refreshed and ready for each day of your holiday.

Outside, Porto awaits. Whether you are exploring the nearby streets, discovering local cafés, or hopping on the metro to explore further afield, Apartment Ellien offers the perfect base. After a day of adventure, return to the cool,

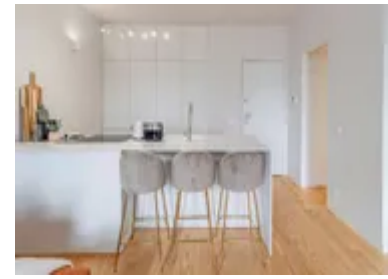


air-conditioned comfort of your apartment, connect to the fast Wi-Fi to share your experiences, and unwind in style. Here at Apartment Ellien, every detail is designed to ensure your stay in Porto is as enjoyable and effortless as possible.

Facilities

Air-Con • Historical Sites • City Homes & Apartments • Has Discount • Special Offer • <1hr to Airport • Walk to Restaurant • Wi-Fi/Internet • Coffee Machine • Hairdryer • Tourist Towns & Villages • TV • Microwave

Interior & Grounds



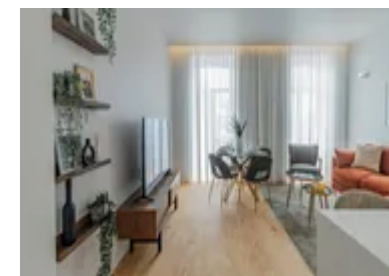
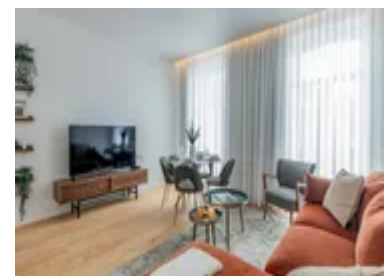
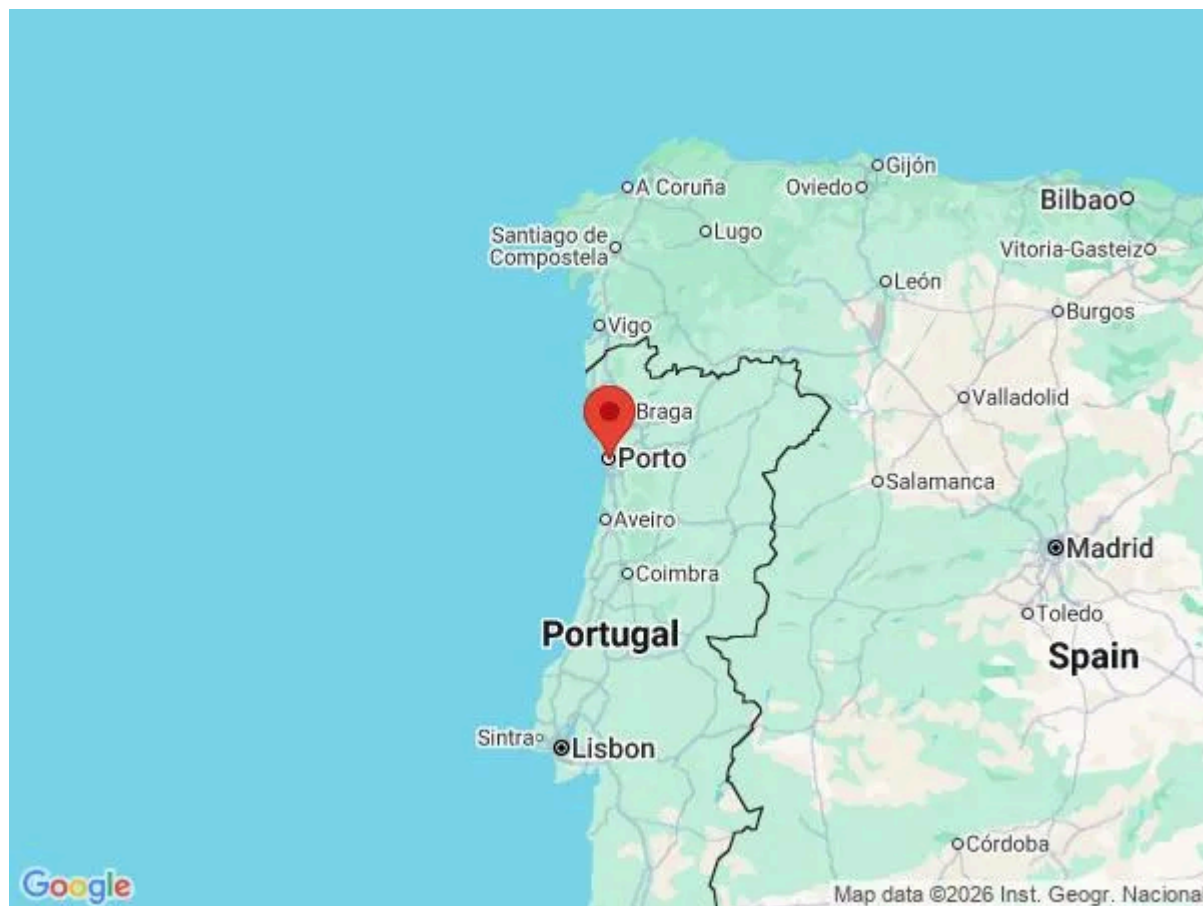
Location & Local Information

Apartment Ellien is ideally located in the heart of Porto, one of Portugal's most vibrant and historic cities. Situated on Rua do Almada, the apartment places you within easy reach of Porto's most iconic landmarks and attractions. Just a two-minute walk from the famous São Bento metro station, known for its stunning azulejo-tiled walls, this location offers unparalleled access to the city's extensive public transport network, making it convenient to explore both the city centre and its surrounding areas.

From Apartment Ellien, you are perfectly positioned to experience Porto's rich cultural heritage. The UNESCO-listed Ribeira district, with its picturesque riverside views and colourful buildings, is just a short stroll away. Nearby, the majestic Dom Luís I Bridge offers breathtaking views of the Douro River. The area is also bustling with cafés, restaurants, and shops, giving you a true taste of local life. Whether you are interested in history, architecture, or simply soaking up the atmosphere, Apartment Ellien's location provides the ideal starting point for an unforgettable holiday in Porto.

Local Amenities

Nearest Airport	Francisco Sá Carneiro Airport (12 km)
Nearest Train Station	Aliados (550 m)
Sightseeing	Igreja do Carmo (800 m)
Sightseeing	Clérigos Church (800 m)
Sightseeing	Church of Saint Ildefonso (1.1 km)
Nearest Supermarket	Supermercados Froiz (210 m)



What we love

- Just steps from São Bento station, you'll be right in the heart of Porto's vibrant culture and historic charm, with easy access to everything the city has to offer
- The fully equipped kitchenette comes with all the essentials, including olive oil, salt, and pepper, so you can easily whip up a meal after a day of exploring
- The cosy and a quiet bedroom provide a peaceful retreat, ensuring you'll have a restful night's sleep, even after a full day in the bustling city

What you should know...

- Be kind to your neighbors and please avoid making noise after 11PM. (Noise is prohibited from 11PM to 7AM as per the law in Portugal)
- All windows and doors must be closed when leaving the apartment or during rainfall
- Please be safe and protect yourself by not leaning over or sitting on the windowsills, balconies, or handrails
- Please note that 2 extra guests can be accommodated sleeping on a sofa bed

Terms & Conditions

- **Arrival time:** 16:00 - 23:30

- **Departure time:** 11:00

- **Energy costs included?:** Yes, included in the rental price.

- **Linen & towels included?:** Yes, included in the rental price.

- **Pets welcome?:** No pets allowed.

- **End of stay cleaning available?:** Yes. However, guests are required to leave the accommodation clean, tidy and in the same condition as on their arrival. Any extra cleaning, laundry, maintenance and/or rubbish disposal required will be charged against the security deposit.

- **Smoking Allowed?:** Smoking & Vaping are not permitted.

- **Minimum stay:** 2 nights.

- **Heating costs included?:** Yes, included in the rental price.

- **Tax:** Portuguese Visitors Tax payable to Oliver's Travels at the time of balance payment (typically costs €1-€10 per adult per night - please enquire if exact amount is required).

- **Internet access?:** Wi-Fi internet access included.

- **Stag & Hen Do Allowed? :** Weddings, stag/hen parties and any special events are not allowed.