

Apartment Ilyana

Region: Portugal Sleeps: 2

Overview

In Porto's heart, on the iconic Rua Mouzinho da Silveira, Apartment Ilyana offers a delightful retreat just a stone's throw from the historic São Bento metro station. This charming duplex apartment welcomes you with open arms, perfectly positioned to explore the vibrant city life of the Undefeated City.

As you step inside, you will immediately appreciate the thoughtfully designed interiors that blend modern comfort with a touch of elegance. The apartment features a spacious bedroom with a double bed adorned with four large pillows and crisp linen, ensuring you enjoy a restful night's sleep. The minimalist decor and clean lines create a relaxing atmosphere, ideal for unwinding after a day of sightseeing.

The contemporary bathroom complements the apartment's sleek aesthetic. It is equipped with a shower, a mirror, and all the essentials, like towels, toilet paper, and a hairdryer. Shampoo, body wash, and soap are provided, making your stay as hassle-free as possible.

The well-equipped kitchenette is perfect for those who love to cook or simply enjoy a coffee at any time of day. It includes a stove, microwave, refrigerator, toaster, electric kettle, and capsule coffee machine. Essential kitchen staples such as olive oil, salt, and pepper are also provided to make your culinary experience convenient and enjoyable.

Outside, you will find a quaint area to relax, offering a peaceful escape with views of the lively street below. The apartment's location puts you within easy reach of Porto's best attractions, allowing you to experience the city like a local. Fast Wi-Fi, air conditioning, and a hassle-free 24-hour self-check-in add to the convenience, making your



stay both comfortable and effortless.

Whether you are here to explore the rich history and vibrant culture of Porto or simply soak in the charming atmosphere, Apartment Ilyana provides the perfect base for your adventure.

Facilities

Wi-Fi/Internet • Air-Con • Wow Factor • Laptop Friendly Workspace • City Homes & Apartments • Walk to Restaurant • <1hr to Airport • Microwave • Coffee Machine • Hairdryer • TV • Tourist Towns & Villages • Historical Sites

Interior & Grounds

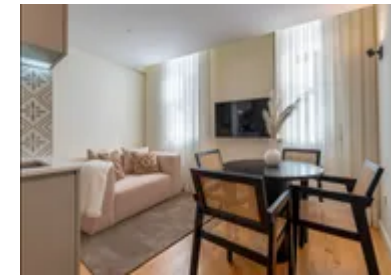
The Apartment

Interior

- Living Area: A comfortable space for relaxation.
- Kitchenette: Fully equipped with appliances and basic kitchen essentials.
- Bathroom: Spacious and modern, featuring a shower, sink, mirror, toilet, and provided toiletries.
- Bedroom: Includes a double bed with large pillows and crisp linen for a restful night's sleep.

Additional Facilities

- Wi-Fi
- TV
- Air Conditioning
- Toiletry kit
- Hair dryer
- Hangers
- Iron



Location & Local Information

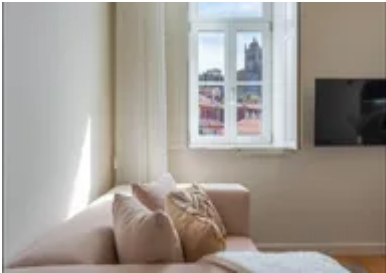
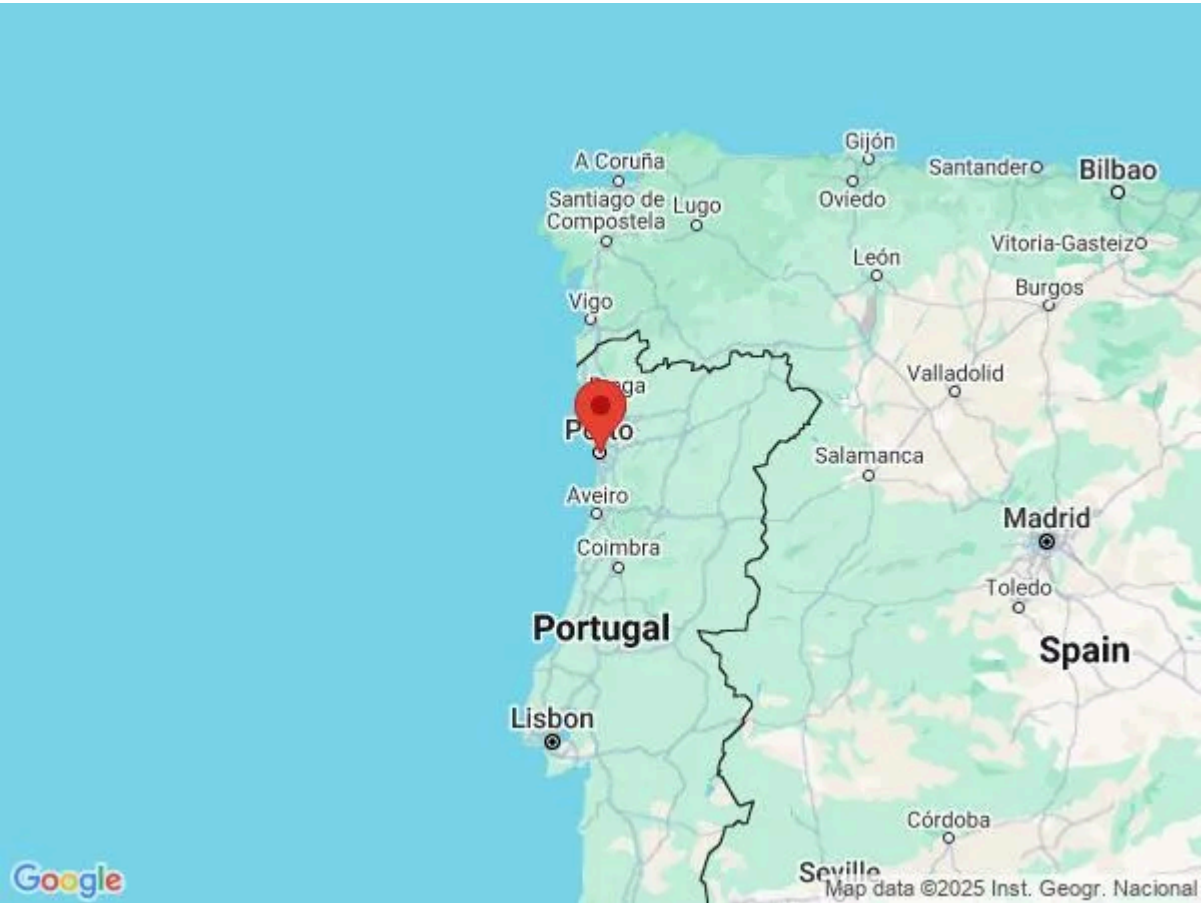
Apartment Ilyana is ideally situated on Rua Mouzinho da Silveira, a central street in Porto renowned for its vibrant atmosphere and historic charm. Located just two minutes from the iconic São Bento metro station, the apartment provides easy access to the city's extensive transport network, making it a convenient base for exploring Porto.

This prime location places you in the heart of the Undefeated City, surrounded by a wealth of attractions. You will find yourself within walking distance of Porto's historic sites, such as the stunning Livraria Lello and the picturesque Ribeira District, renowned for its scenic riverside views and bustling cafes. The area is also home to a variety of local eateries, shops, and cultural landmarks, offering a rich taste of Porto's unique character.

Whether you are here to delve into Porto's history, indulge in its culinary delights, or simply enjoy its vibrant street life, Apartment Ilyana's central location ensures you are perfectly positioned to experience the best of this captivating city.

Local Amenities

Nearest Airport	Francisco Sá Carneiro Airport (17 km)
Nearest Train Station	São Bento (300 m)
Nearest Supermarket	Queres uma Bolachada? (54 m)
Sightseeing	Porto Cathedral (260 m)
Sightseeing	Bolsa Palace (300 m)
Sightseeing	Clérigos Church (400 m)



What we love

- Just minutes from São Bento metro station, perfect for exploring Porto's top spots
- Enjoy a hassle-free stay with high-end appliances, fast Wi-Fi, and air conditioning
- Sink into a comfy double bed with crisp linens and plenty of pillows for a restful night's sleep

What you should know...

- Be kind to your neighbours and please avoid making noise after 22h as this is a residential building (Noise is prohibited from 22h until 8h in the morning as per the law in Portugal)
- All windows and doors must be closed when leaving the apartment or during rainfall
- Please be safe and protect yourself by not leaning over or sitting on the windowsills, balconies or handrails

Terms & Conditions

- **Arrival time:** 16:00 - 23:30
- **Departure time:** 11:00
- **Energy costs included?:** Yes, included in the rental price.
- **Linen & towels included?:** Yes, included in the rental price.
- **Pets welcome?:** No pets allowed.
- **End of stay cleaning available?:** Yes. However, guests are required to leave the accommodation clean, tidy and in the same condition as on their arrival. Any extra cleaning, laundry, maintenance and/or rubbish disposal required will be charged against the security deposit.
- **Smoking Allowed?:** Smoking & Vaping are not permitted.
- **Minimum stay:** 2 nights.
- **Heating costs included?:** Yes, included in the rental price.
- **Tax:** Tourist Tax is included in the rental price.
- **Internet access?:** Wi-Fi internet access included.
- **Stag & Hen Do Allowed? :** Weddings, stag/hen parties and any special events are not allowed.