

# Apartment Mahlia

Region: Portugal    Sleeps: 4

---

## Overview

Apartment Mahlia is a charming retreat in downtown Porto's heart. You will immediately feel the blend of historical charm and contemporary convenience as you enter the front door. This lovely two-bedroom apartment sits just a short stroll away from Porto's main squares and landmarks, making it a perfect base for exploring the city's vibrant culture.

Entering the apartment, you are greeted by a spacious living area bathed in natural light. The open-plan design seamlessly connects the living room and dining space, offering a comfortable setting to unwind after a day of adventure. Sink into the plush sofa to enjoy your favourite music on the Marshall sound system or simply relax in the ambient lighting. The air conditioning and heating system ensure a pleasant atmosphere throughout the year.

Moving into the kitchenette, you will find it well-equipped with modern appliances to suit all your culinary needs. Whether you are whipping up a quick breakfast or preparing a hearty dinner, you can access a stove, oven, microwave, and even a Nespresso machine for that essential morning coffee. The washing machine and dishwasher add an extra layer of convenience, making it easy to keep things tidy during your stay.

The apartment features two inviting bedrooms, each furnished with a queen-sized bed adorned with high-quality linens and ample pillows. These rooms are designed to be restful havens, providing a peaceful retreat after exploring the city. The elegant bathroom is stocked with all the essentials—shower, large mirror, and a range of toiletries, including shampoo and conditioner.

Stepping outside, you will find the area surrounding the apartment as delightful as the interior. The vibrant



cityscape of Porto awaits just outside your door, offering a plethora of dining, shopping, and cultural experiences.

In summary, Apartment Mahlia combines the charm of Porto's historical essence with the comfort of modern amenities, making it a welcoming home away from home for your city adventure.

## Facilities

Air-Con • Washing Machine • TV • City Homes & Apartments • Coffee Machine • Historical Sites • Wi-Fi/Internet • Hairdryer • Easy By Train • Laptop Friendly Workspace • Wow Factor • Lift • Ideal for Babies & Toddlers • Walk to Restaurant • <1hr to Airport • Dishwasher • Microwave • Tourist Towns & Villages

# Interior & Grounds

## The Apartment

### *Interior*

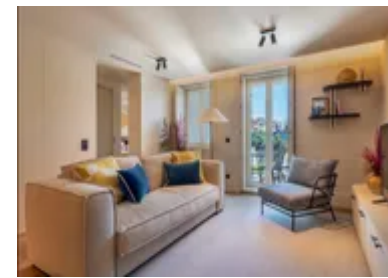
- Living Room: Featuring a comfortable sofa, dining area, and a Marshall sound system.
- Kitchenette: Fully equipped with appliances such as a stove, oven, microwave, refrigerator, Nespresso machine, toaster, washing machine, and dishwasher.
- Bedroom 1: Queen-sized bed, large pillows, and comfortable quality linens.
- Bedroom 2: Queen-sized bed, large pillows, and comfortable quality linens.
- Bathroom: Equipped with a shower, a large mirror, toilet, and essential toiletries.

### *Exterior*

- Balcony/terrace

### **Additional Facilities**

- Wi-Fi
- TV
- Air Conditioning
- Balcony / Terrace
- Toiletry kit
- Hair dryer
- Hangers
- Iron
- Washer



# Location & Local Information

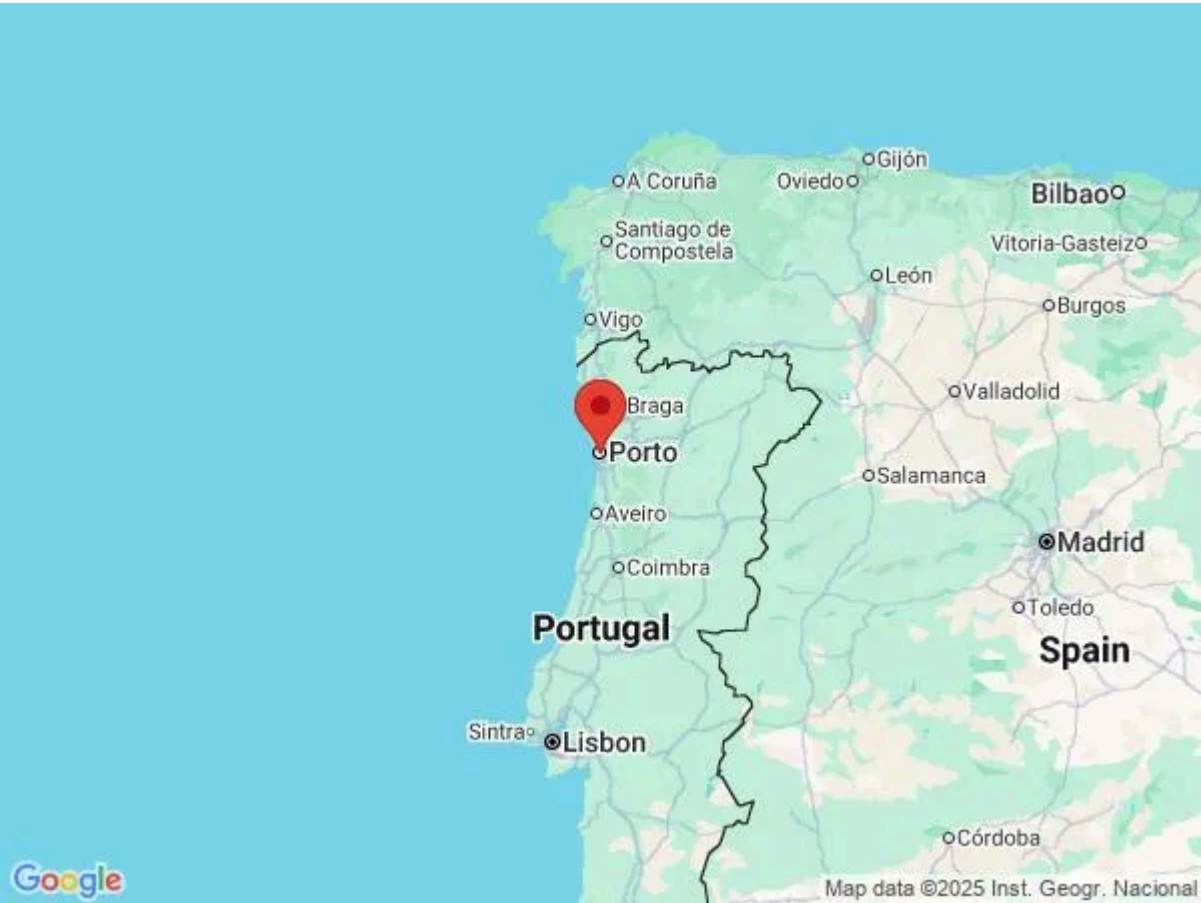
Apartment Mahlia is ideally situated in the heart of downtown Porto, offering an exceptional base for exploring this vibrant city. Located within walking distance of Porto's main squares and historic landmarks, you will find yourself immersed in the rich cultural tapestry of the area. The apartment's central location provides easy access to iconic attractions such as the Livraria Lello bookstore, the stunning São Bento Railway Station, and the picturesque Ribeira district along the Douro River.

The surrounding neighbourhood boasts a variety of dining options, from traditional Portuguese eateries to trendy cafes and international restaurants. For those interested in shopping, nearby streets offer a range of boutiques, markets, and shops to explore. Public transportation is readily available, making it convenient to venture further afield or explore Porto's diverse neighbourhoods.

Whether you are interested in history and architecture or simply enjoying the local cuisine, Apartment Mahlia's prime location ensures you're perfectly positioned to experience the best of Porto.

## Local Amenities

Nearest Airport	Francisco Sá Carneiro Airport (15 km)
Nearest Train Station	Trindade (700 m)
Nearest Supermarket	Mercearia kamal (180 m)
Sightseeing	Church of Saint Ildefonso (1 km)
Sightseeing	Clérigos Church (1 km)
Sightseeing	Porto Cathedral (1 km)



## What we love

- Step out and stroll to Porto's top squares and landmarks, making sightseeing a breeze
- The private balcony provides the perfect outdoor space to relax in the Porto sunshine, enjoying the sounds of the city below
- Rest easy in plush queen-sized beds with quality linens, perfect for recharging after city adventures

## What you should know...

- Be kind to your neighbours, and please avoid making noise after 22h as this is a residential building (Noise is prohibited from 22h until 8h in the morning as per the law in Portugal)
- All windows and doors must be closed when leaving the apartment or during rainfall
- Please be safe and protect yourself by not leaning over or sitting on the windowsills, balconies or handrails

# Terms & Conditions

- **Security deposit:** Oliver's Travels to charge €200 to client's credit card before arrival and refunded two weeks after departure, subject to full site inspection.
- **Arrival time:** 15:00 - 23:30
- **Departure time:** 11:00
- **Energy costs included?:** Yes, included in the rental price.
- **Linen & towels included?:** Yes, included in the rental price.
- **Pets welcome?:** No pets allowed.
- **End of stay cleaning available?:** Yes. However, guests are required to leave the accommodation clean, tidy and in the same condition as on their arrival. Any extra cleaning, laundry, maintenance and/or rubbish disposal required will be charged against the security deposit.
- **Smoking Allowed?:** Smoking & Vaping are not permitted.
- **Minimum stay:** 2 nights.
- **Heating costs included?:** Yes, included in the rental price.
- **Tax:** Tourist Tax is included in the rental price.
- **Internet access?:** Wi-Fi internet access included.
- **Stag & Hen Do Allowed? :** Weddings, stag/hen parties and any special events are not allowed.