

Marble Condo

Region: Paris Sleeps: 2

Overview

Discover the elegance of the Marble Condo in the heart of Paris. This sophisticated retreat offers a seamless blend of modern comfort and timeless design. Inside, the condo boasts a chic, open-plan living space highlighted by sleek marble flooring and contemporary furnishings. The large windows fill the area with natural light, complementing the minimalist décor and high-end finishes. The fully-equipped kitchen is a chef's dream, featuring top-of-the-line appliances and ample counter space, while the cosy bedroom provides a tranquil haven with its plush bedding and stylish touches.

Step outside and immerse yourself in the vibrant Parisian lifestyle. The building's façade showcases classic Parisian architecture, while the surrounding neighbourhood offers a rich tapestry of local cafés, boutiques, and cultural landmarks. The condo's location provides easy access to iconic attractions and charming streets, making it the perfect base for exploring the city. Whether you're here for business or pleasure, the Marble Condo combines luxury and convenience for an unforgettable Parisian experience.

Facilities

Air-Con • City Homes & Apartments • Historical Sites • Romantic • Special Offer • Has Discount • Not For Little Ones • Walk to Restaurant • Wi-Fi/Internet • Easy By Train • Washing Machine • Coffee Machine • Hairdryer • Outdoor Pursuit & Activities • Tourist Towns & Villages • Laptop Friendly Workspace • Dishwasher • Microwave • Heating



Interior & Grounds

Interior

- Lounge equipped with a sofa and a coffee table
- Dining area with table and chairs
- Dedicated workspace
- Fully equipped open kitchen (refrigerator, hotplate, oven, microwave, washing machine, dishwasher, kettle, toaster, coffee maker)
- Room with queen-size bed and adjoining bathroom (washbasin, shower)
- Separate toilets

Additional Facilities

- Wi-Fi
- Vinyl player
- Audio system with Bluetooth and AUX
- Blender
- Central heating

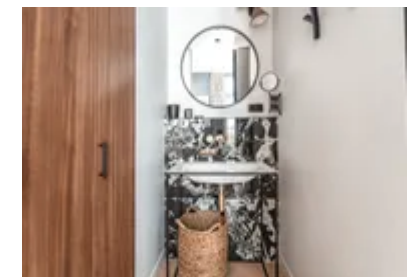
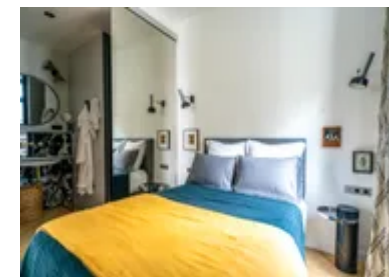
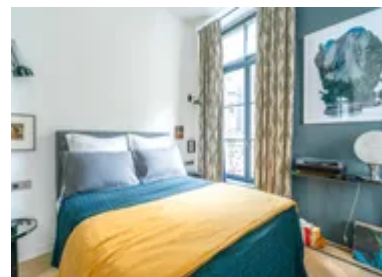


Location & Local Information

Experience the heart of Paris from Marble Condo, nestled in the vibrant 1st arrondissement. This prime location places you steps away from iconic landmarks like the Louvre Museum and Palais Royal, offering a perfect blend of historical grandeur and contemporary charm. Stroll through the nearby Jardin des Tuileries or explore the surrounding streets' chic boutiques and gourmet eateries. With its central position, you'll have effortless access to Parisian culture, from renowned theatres and art galleries to bustling markets and serene cafés. Immerse yourself in the city's timeless allure right from your doorstep.

Local Amenities

Nearest Airport	Paris Charles de Gaulle Airport (30 km)
Nearest Bar/Pub	Thirsty Mad Cat (700 m)
Nearest Restaurant	Le Festival (10 m)
Nearest Supermarket	Carrefour City (50 m)
Nearest Train Station	Châtelet les Halles (1 km)
Sightseeing	Louvre Museum (450 m)



What we love

- Central Location: Steps from the Louvre and Palais Royal, perfect for exploring Parisian landmarks
- Spacious Design: Open-plan living area ideal for families and groups
- Modern Comfort: Sleek marble flooring and contemporary furnishings enhance your stay
- Nearby Attractions: Walk to Jardin des Tuileries and local cafés
- Fully-Equipped Kitchen: Convenience for preparing meals and snacks

What you should know...

- This apartment is not suitable for persons with reduced mobility
- The apartment is not child-friendly and is better suited to couples

Terms & Conditions

- **Security deposit:** €650 charged to client's credit card before arrival and refunded two weeks after departure, subject to full inspection.
- **Arrival time:** 3 pm
- **Departure time:** 11 am
- **Energy costs included?:** Yes, included in the rental price.
- **Linen & towels included?:** Yes, included in the rental price.
- **Pets welcome?:** Not allowed.
- **Changeover day:** Flexible.
- **End of stay cleaning available?:** Not included in the rental price, extra €65 to be paid with the balance due.
- **Smoking Allowed?:** Smoking & Vaping are not permitted.
- **Minimum stay:** 3 nights. All other durations on request.
- **Heating costs included?:** Yes, included in the rental price.
- **Tax:** Paris city tax is €5.20 per person, per night. City tax is not included in the rental rate and is payable locally.
- **Internet access?:** Wi-Fi internet access included.
- **Stag & Hen Do Allowed? :** Weddings, stag/hen parties and any special events are not allowed.