

Heatherstone House

Region: The North East **Sleeps:** 10

Overview

Heatherstone House is a charming retreat near Skipton, Yorkshire, perfect for family escapes or gatherings with friends. With six beautifully appointed bedrooms, this cosy holiday home accommodates up to ten guests. The open-plan kitchen and dining area invites shared cooking and memorable meals, while the snug living room, complete with a woodburner fireplace, is ideal for warming up on crisp winter evenings. Luxuriously furnished, Heatherstone offers a seamless blend of comfort and style. Step outside to find a spacious garden, perfect for summer relaxation with scenic countryside views — the ultimate Yorkshire getaway in any season.

Heatherstone House is an ideal base for exploring the Yorkshire Dales. Just minutes away, the market town of Skipton — known as the “gateway to the Dales” — features a medieval castle, charming boutiques, and a renowned market. Situated on a 3,000-acre Wellness Estate dating back to 1097, guests can enjoy curated outdoor experiences, including forest therapy, wild swimming, cycling, and foraging through ancient woodlands and parklands. The on-site Wellness Center invites rejuvenation with bespoke therapies, a hydro massage pool, sauna, gym, and more, while the Bistro serves delicious meals, including complimentary weekday breakfasts. Heatherstone House promises a truly memorable Yorkshire holiday.

Facilities

Wi-Fi/Internet • Golf Nearby • Tennis Nearby • Spa/Massage • Rural Location • Cots (Cribs) • Shared Pool • Gym/Fitness Room • Cottage • Country Estate • Wellness • Kid-friendly excursions • Pre-Stocked Fridge Available • Yoga Classes Available • Transfers Available • Breakfast Included • Heated Pool • Indoor Pool • Ideal for Babies & Toddlers • Ideal for Kids • Ideal for Teens • Pets on Request • Walk to Restaurant • Washing Machine • Tumble Dryer • Dishwasher • Electric Car Charger • Ideal for Parties • Ideal for Xmas/NY • Ground Floor Bed & Bath • Sauna/Steam • Working Fireplace/Woodburner • Fire Pit • Heating • High Chair(s) • Parking Space • Walking/Hiking Paths • Cycling • Outstanding Landscapes • Outdoor Pursuit & Activities • Tourist Towns & Villages • Historical Sites



Interior & Grounds

Heatherstone House

Ground Floor

- Open-plan kitchen and dining area
- Living room with woodburner
- WC
- Bedroom with double bed with ensuite bathroom with bath, shower and WC

First Floor

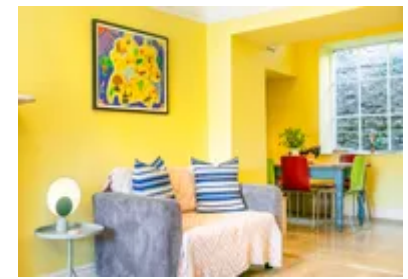
- Bedroom with double bed and ensuite bathroom with shower and WC
- Bedroom with double bed
- Bedroom with double bed
- Bedroom with single bed
- Bedroom with single bed
- Family bathroom with shower and WC
- Family bathroom with bath, shower and WC

Exterior

- Patio
- Large private garden
- Parking space

Additional Facilities

- Underfloor heating
- Washing machine
- Tumble dryer
- Dishwasher
- Wifi
- Satellite TV
- Travel cot and highchair on request
- Complimentary week day breakfast
- Wellness facilities (please see 'Extras' tab for more details)
- Outdoor activities (please see 'Extras' tab for more details)



Location & Local Information

Heatherstone House offers an adventure-rich retreat with wellness at its heart. Guests can enjoy activities tailored to their preferences, including scenic walks, biking, 4x4 tours, and wild swimming across the estate's ancient woodlands and parklands. For ultimate relaxation, the Wellness Centre features a hydro pool, sauna, steam room, yoga, and meditation sessions (see 'Extras' for details). Outdoor enthusiasts can also indulge in forest therapy, foraging, and idyllic picnic spots, ensuring something special for everyone.

Just ten minutes away, the lively town of Skipton brims with historic charm, featuring a famed castle, cobbled streets, boutique shops, and scenic canal paths perfect for strolls and boat rides. Nearby, Bolton Abbey enchants with its Priory ruins, riverside views, and iconic stepping stones. Explore the Yorkshire Dales with breathtaking hikes through the Valley of Desolation, wildlife spotting in Strid Wood, or a hot air balloon ride over Nidderdale for panoramic vistas. Even the Lake District is within a day's reach, making Heatherstone House an ideal rural escape to reconnect, unwind, and explore at your own pace.

Local Amenities

Nearest Airport	Leeds Bradford Airport (36.5 km)
Nearest Train Station	Gargrave Train Station (2.5 km)
Nearest City	Leeds (49 km)
Nearest Town	Skipton (6.5 km)
Nearest Village	Broughton (1 km)
Nearest Bar/Pub	The Bull (0.5 km)
Nearest Restaurant	On site (In walking distance)
Nearest Shop	Co-Op, Gargrave (3 km)
Nearest Supermarket	Morrisons, Skipton (5.5 km)
Nearest Golf	Skipton Golf Club (6 km)



Nearest Beach	Morecambe Beach (68 km)
---------------	----------------------------

What we love

- Guests enjoy wonderful hospitality during their stay and can use the Wellbeing Centre, book trips, activities and catering, which of course come with additional fees.
- The Wellness Centre is open to all estate guests daily between 10 and 12, subject to additional costs. If you would like to book at other times, you can do so subject to availability (please see 'Extras' tab for more details).
- Weekday breakfasts are included with your stay at the on-site Bistro. It is also open for lunch, subject to additional costs (please see 'Extras' tab).

What you should know...

- Up to 2 pets are welcome to stay at Heatherstone House on request, but are subject to an additional charge. Please see T&Cs form more details.
- Please note that the Wellness and Bistro facilities on the estate are shared with guests staying in other properties. However, private activities and experiences can certainly be arranged! Please don't hesitate to enquire.

Terms & Conditions

- **Security deposit:** No security deposit required.
- **Arrival time:** 4:00 pm
- **Departure time:** 10:00 am
- **Energy costs included?:** Yes, included in the rental price
- **Linen & towels included?:** Yes, included in the rental price
- **Pets welcome?:** Yes, a maximum of 2 pets are welcome at Heatherstone House, but are subject to an additional fee of £25 per pet per stay. Please enquire at time of booking.
- **Changeover day:** Flexible
- **End of stay cleaning available?:** Yes. However, guests are required to leave the accommodation clean, tidy and in the same condition as on their arrival. Any extra cleaning, laundry, maintenance and/or rubbish disposal required will be charged against the security deposit.
- **Smoking Allowed?:** No smoking or vaping
- **Minimum stay:** 3 nights
- **Heating costs included?:** Yes, included in the rental price
- **Stag & Hen Do Allowed? :**