

Apartment Bienfaisance

Region: Paris Sleeps: 4

Overview

Welcome to Apartment Bienfaisance, a beautifully curated two-bedroom residence in the prestigious heart of Paris. Situated just a stone's throw from the city's historic and cultural highlights, this stately apartment embodies Parisian charm with an elegant flair that's both timeless and inviting. Perfectly located for leisurely strolls along grand boulevards and intimate evenings at nearby cafes, this residence offers a refined yet welcoming escape from the bustling city below.

Stepping inside, you are greeted by a grand entry hall that immediately sets a tone of elegance. Nautical paintings line the white wood-panelled walls, giving the space a touch of sophistication, offset by dark wooden furnishings that create a warm and balanced contrast. The hall branches into various parts of the apartment, leading to a guest toilet and a separate utility room with all the essentials for a seamless stay.

To your right, passing through ceremonial double doors, you enter the open-plan living and dining area. Here, natural light floods through large, floor-to-ceiling windows, illuminating the space where contemporary dining chairs surround a generous table—ideal for long, shared meals. Across the room, a comfortable two-seater sofa invites you to relax, while a desk with two chairs provides a quiet spot for reading or catching up on work. A modern TV area completes the space, offering entertainment for quiet evenings in.

Through connecting doors, you'll find the fully equipped kitchen, a bright and functional space with everything from an electric hob to a Nespresso machine and ample storage to make cooking a pleasure. A small table by the window, complete with a highchair, creates an intimate setting for casual breakfasts.



The reception room exudes character, its three floor-to-ceiling windows and eclectic seating options—a quilted leather sofa, suede two-seater, and armchairs—make it ideal for entertaining or simply unwinding. Decorative details like gilt-framed mirrors, an ornate fireplace, and a Japanese screen add an extra touch of charm.

The main bedroom, further along the corridor, is a tranquil retreat with a spacious double bed, in-built wardrobes, and a large window that bathes the room in natural light. The second bedroom doubles as a study with an elegant desk, marble fireplace, and a double sofa bed, making it a versatile space for work or rest. Each bathroom is thoughtfully designed, with a bathtub in one and a shower in the other, ensuring comfort throughout your stay.

Apartment Bienfaisance offers a harmonious blend of classic Parisian architecture and modern comforts, making it an ideal haven for a truly memorable stay in Paris.

Facilities

Air-Con • City Homes & Apartments • Historical Sites • Special Offer • Has Discount • Wow Factor • <1hr to Airport • Walk to Restaurant • Wi-Fi/Internet • Easy By Train • Washing Machine • Tourist Towns & Villages • TV • Lift • Laptop Friendly Workspace • Tumble Dryer • Microwave • Working Fireplace/Woodburner • Heating • Ideal for Babies & Toddlers

Interior & Grounds

The Apartment

Interior

- Large entry hall
- Guest toilet
- Separate utility room with a sink, a washing machine, tumble dryer, ironing board and the boiler.
- Open plan living and dining area
- Fully equipped kitchen with breakfast table
- Reception room
- Bathroom 1 with bathtub
- Separate WC
- Bedroom 1: Large double bed with built in wardrobe and storage
- Bathroom 2 with shower
- Study/Bedroom 2: Large desk and double sofa bed

Additional Facilities

- Wi-Fi
- Large flat-screen TV
- Heating
- Linen & towels
- Baby Cot
- Elevator



Location & Local Information

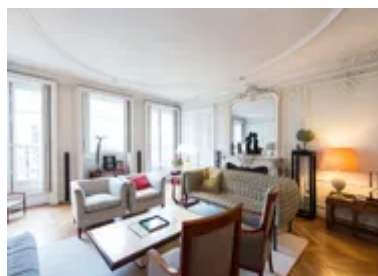
Apartment Bienfaisance is ideally situated in the heart of Paris, placing you within easy reach of the city's most iconic attractions, world-class dining, and charming local experiences. Nestled in a prestigious arrondissement, this location is perfect for travellers looking to immerse themselves in both the vibrant culture and timeless elegance of Paris.

Just a short stroll from the apartment, you'll find the historic Opéra Garnier, renowned for its stunning architecture and grand performances. The nearby Champs-Élysées and the luxurious boutiques along Rue Saint-Honoré invite endless shopping, while local bistros and cafes offer quintessential Parisian dining. Cultural landmarks such as the Louvre Museum and the Palais Royal gardens are easily accessible, providing countless opportunities to explore art and history.

The area is also well-connected by public transport, making it convenient for day trips or further excursions around the city. With such a central location, Apartment Bienfaisance offers an ideal starting point for a memorable holiday that captures the best of Parisian life.

Local Amenities

Nearest Airport	Paris Charles de Gaulle Airport (30 km)
Nearest Train Station	Saint-Augustin (450 m)
Nearest Supermarket	Monoprix (450 m)
Sightseeing	Palais Garnier (1 km)
Sightseeing	Arc de Triomphe (2 km)
Sightseeing	Place de la Concorde (2 km)



What we love

- Step into classic Parisian charm with elegant wood-panelled walls, herringbone floors, and grand ceiling mouldings that make every room feel unique and inviting
- Enjoy bright, spacious living areas with floor-to-ceiling windows—perfect for relaxing after a day exploring Paris
- The central location means top attractions, shopping, and iconic cafes are all just a short stroll away

What you should know...

- Please note, this is a lived-in home, which we think adds to their charm! Guests should, however, expect to find homeowner belongings and personal items within the property
- This apartment is on the fourth floor with lift access
- The study features a double sofa bed to sleep an extra two guests
- Please take care, as there are a few antique pieces of furniture and decorative items

Terms & Conditions

- **Arrival time:** 15:00 - 21:00
- **Departure time:** 10:00
- **Energy costs included?:** Yes, included in the rental price.
- **Linen & towels included?:** Yes, included in the rental price.
- **Pets welcome?:** No pets allowed.
- **End of stay cleaning available?:** Yes. However, guests are required to leave the accommodation clean, tidy and in the same condition as on their arrival. Any extra cleaning, laundry, maintenance and/or rubbish disposal required will be charged against the security deposit.
- **Smoking Allowed?:** Smoking & Vaping are not permitted.
- **Insurance:** Guests are required to be in possession of a valid insurance policy, which covers them for cancellations, loss of personal belongings, personal liability and any accidental damage caused during their stay.
- **Minimum stay:** 2 nights.
- **Heating costs included?:** Yes, included in the rental price.
- **Tax:** Tourist Taxes are not included in the rental price and are to be paid locally in cash on arrival (the correct total per person per night will be sent to you after booking confirmation)
- **Internet access?:** Wi-Fi internet access included.
- **Stag & Hen Do Allowed? :** Weddings, stag/hen parties and any special events are not allowed.