

# Apartment Invalides

Region: France    Sleeps: 2

---

## Overview

Welcome to this stylish one-bedroom apartment, perfectly located in the heart of Paris and just a stone's throw away from some of the city's most iconic attractions, including the Musée Rodin, Les Invalides, and the Eiffel Tower. As you enter, the inviting ambience instantly surrounds you, creating a delightful sense of retreat that feels like a true holiday escape.

Walking into the living and dining area, you're greeted by clean lines and abstract artwork that showcase a modern sensibility. The space is bathed in natural light, thanks to two sets of French doors that invite the outside in. A plush sofa and armchairs create a cosy nook for relaxation, while a patterned rug adds a touch of warmth underfoot. The coffee table and bookshelf are perfect for unwinding with a good book or enjoying a casual conversation. The charm of a vintage grandfather clock adds character to this contemporary space, reminding you of the rich history surrounding you. Bright photographic art, an industrial-style lamp, and colourful cast iron chairs enliven the dining area, encouraging you to linger over meals prepared in the stylish kitchen nearby.

The galley-style kitchen, adjacent to the living room, boasts high ceilings that enhance the sense of space. It's equipped with high-spec fittings, including an oven, coffee machine, and microwave, ensuring you have everything you need to whip up a delightful breakfast or evening meal.

As you explore further, you'll discover a serene study area filled with striped armchairs—a perfect spot for quiet concentration or simply enjoying a moment of calm with your favourite book. This peaceful nook invites you to pause and savour the simplicity of Parisian life.

Adjacent to the study, the minimalist principal bedroom



beckons with its plush king-sized bed and soothing artwork. Here, you can unwind after a day of exploring, enjoying picturesque views of the refined 7th arrondissement through the window.

The en-suite bathroom, with its lustrous charcoal tones and spacious walk-in shower, adds a modern touch. A separate WC is also provided for convenience.

Its outstanding location within one of Paris's most elegant districts truly sets Apartment Invalides apart. With the stunning Les Invalides and the Musée Rodin just moments away from your doorstep, this apartment offers more than just a place to stay; it's a gateway to immerse yourself in Paris's captivating charm and sophistication.

## Facilities

Wi-Fi/Internet • Lift • Easy By Train • Wow Factor • City Homes & Apartments • Walk to Restaurant • <1hr to Airport • Washing Machine • Tumble Dryer • Microwave • Smart TV • TV • Heating • Tourist Towns & Villages • Historical Sites

# Interior & Grounds

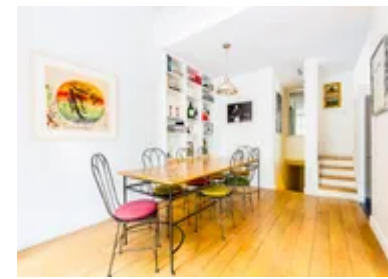
## The Apartment

### *Interior*

- Living and dining area: with a sofa, armchairs, patterned rug, coffee table and bookshelf, while a characterful grandfather clock brings a vintage twist to this most contemporary of spaces.
- Galley-style kitchen fully furnished.
- Study
- Bedroom 1: King-size bed with picturesque views and an ensuite bathroom with a walk-in shower
- Separate WC

### **Additional Facilities**

- Wi-Fi
- Heating
- Linen & towels
- Elevator
- Washing machine and dryer
- Flat-screen TV





# Location & Local Information

Apartment Invalides is nestled in the heart of the prestigious 7th arrondissement, making it an ideal holiday destination for those seeking to experience the quintessential charm of Paris. This historic neighbourhood is renowned for its stunning architecture and proximity to iconic landmarks. Just a short stroll away, visitors can explore the magnificent Les Invalides, a complex that houses museums and monuments, including the tomb of Napoleon Bonaparte. The nearby Musée Rodin showcases a beautiful collection of the artist's works set in a tranquil garden, offering a perfect spot for leisurely walks.

The area is also well-connected by public transport, allowing easy access to other parts of the city, including the vibrant streets of the Marais and the scenic views along the Seine. With a selection of charming cafés, gourmet restaurants, and boutique shops, the 7th arrondissement provides a rich culinary and cultural experience. Whether you're wandering along the elegant avenues or enjoying the view of the Eiffel Tower from a nearby park, this district promises an unforgettable Parisian holiday.

## Local Amenities

Nearest Airport	Paris Charles de Gaulle Airport (33 km)
Nearest Train Station	Saint-François-Xavier (220 m)
Nearest Supermarket	Carrefour Express (400 m)
Sightseeing	Hôtel des Invalides (400 m)
Sightseeing	Eiffel Tower (2 km)
Sightseeing	Place de la Concorde (2 km)



## What we love

- Enjoy the spacious, sunlit living area with charming French doors that invite the outside in—perfect for relaxing after a day of exploring Paris!
- Indulge in the modern galley kitchen equipped with everything you need to whip up a delicious meal or enjoy a morning coffee
- Step outside to find iconic attractions like the Eiffel Tower and Musée Rodin, which are just a leisurely stroll away and are ideal for making the most of your Parisian adventure!

## What you should know...

- Please note, this is a lived-in home, which we think adds to their charm! Guests should, however, expect to find homeowner belongings and personal items within the property
- This apartment is not suitable for children under 12 years old
- The apartment is located on the first floor, with stairs up to the entrance

# Terms & Conditions

- **Arrival time:** 15:00 - 21:00
- **Departure time:** 10:00
- **Energy costs included?:** Yes, included in the rental price.
- **Linen & towels included?:** Yes, included in the rental price.
- **Pets welcome?:** No pets allowed.
- **End of stay cleaning available?:** Yes. However, guests are required to leave the accommodation clean, tidy and in the same condition as on their arrival. Any extra cleaning, laundry, maintenance and/or rubbish disposal required will be charged against the security deposit.
- **Smoking Allowed?:** Smoking & Vaping are not permitted.
- **Insurance:** Guests are required to be in possession of a valid insurance policy, which covers them for cancellations, loss of personal belongings, personal liability and any accidental damage caused during their stay.
- **Minimum stay:** 2 nights.
- **Heating costs included?:** Yes, included in the rental price.
- **Tax:** Tourist Taxes are not included in the rental price and are to be paid locally in cash on arrival (the correct total per person per night will be sent to you after booking confirmation)
- **Internet access?:** Wi-Fi internet access included.
- **Stag & Hen Do Allowed? :** Weddings, stag/hen parties and any special events are not allowed.