

Apartment Orsay

Region: Paris Sleeps: 5

Overview

Nestled in one of Paris's most sought-after neighbourhoods, Apartment Orsay offers an ideal base for exploring the City of Light. Located just a stone's throw from the iconic Eiffel Tower and the serene Esplanade des Invalides park, you'll find yourself immersed in the vibrant culture and charm of Paris from the moment you arrive. The enchanting streets filled with cafés, boutiques, and picturesque views will beckon you to step outside and experience the magic that surrounds you.

As you enter the apartment, you are welcomed by a bright and inviting dining room. A beautiful wooden oval table, surrounded by five matching chairs, takes centre stage, perfect for enjoying leisurely meals with loved ones. The large windows frame a stunning view of the Eiffel Tower, ensuring that every meal comes with a touch of Parisian flair. Soft rugs on the parquet flooring seamlessly connect the dining area to the living room, creating a warm and welcoming atmosphere.

Moving into the living room, you'll find a cosy space designed for relaxation. A comfortable leather sofa invites you to sit back and unwind, while occasional chairs around a charming coffee table provide ample seating for gatherings. A flat-screen TV and a characterful fireplace add to the room's charm, making it the perfect spot to enjoy a quiet evening after a day of exploration.

The separate kitchen is fully equipped to cater to all your culinary needs. Whether you're whipping up breakfast or preparing a feast, you'll find a fridge, oven, microwave, and even a coffee machine at your disposal. A small table and chairs in the kitchen offer a delightful space for casual meals or a quick cup of coffee as you plan your day.

Apartment Orsay boasts three inviting bedrooms, each



designed for comfort. The first bedroom features two single beds that can be combined into a spacious double, along with a study desk and a bright window that invites natural light. The second bedroom includes a convenient sofa bed, perfect for accommodating extra guests, alongside a bookshelf and an antique bureau illuminated by a skylight. The third bedroom offers a charming oak set and a glimpse of the Eiffel Tower peeking through the rooftops, ensuring a peaceful retreat after a day of adventures.

With two well-appointed bathrooms, one with a bathtub and the other featuring a shower, your comfort and convenience are well taken care of. The laundry facilities, including a washing machine and dryer, make it easy to stay refreshed during your stay.

Step outside to discover the charm of your surroundings. The inviting exterior of the apartment reflects the timeless beauty of Paris, and with the city's vibrant streets just outside your door, you'll feel the pulse of this remarkable city every day. Apartment Orsay is not just a place to stay; it's a home away from home, ready to welcome you to Paris.

Facilities

City Homes & Apartments • Historical Sites • Special Offer • Has Discount • Wow Factor • <1hr to Airport • Walk to Restaurant • Wi-Fi/Internet • Washing Machine • Coffee Machine • Hairdryer • Tourist Towns & Villages • TV • Lift • Tumble Dryer • Microwave • Smart TV • Working Fireplace/Woodburner • Heating • Ideal for Babies & Toddlers

Interior & Grounds

The Apartment

Interior

- Dining room with view of the Eiffel Tower, wooden oval table and five chairs
- Open plan living room with flat-screen TV and small characterful fireplace
- Fully equipped, separate kitchen with breakfast table
- Bedroom 1: Twin beds (can switch to large double), study desk and chair
- Bathroom 1: Bathtub with overhead shower, toilet and sink
- Bedroom 1: Double sofa-bed and bookshelf
- Bathroom 2: Shower with a sink, a toilet and a washing machine/dryer
- Bedroom 3: Double bed, bedside tables and a wardrobe.

Additional Facilities

- Wi-Fi
- Baby Cot
- Elevator
- Heating
- Linen & towels
- Flat-screen TV
- Washing machine and tumble dryer



Location & Local Information

Apartment Orsay is ideally situated in one of the most desirable neighbourhoods of Paris, just moments away from some of the city's most iconic landmarks. Located near the breathtaking Eiffel Tower, guests can enjoy stunning views and the opportunity to explore the surrounding gardens and parks, including the picturesque Esplanade des Invalides. This area is rich in history and culture, making it a perfect holiday destination for those seeking to immerse themselves in the Parisian way of life.

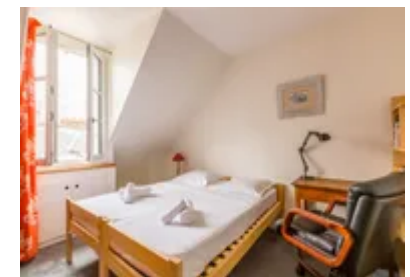
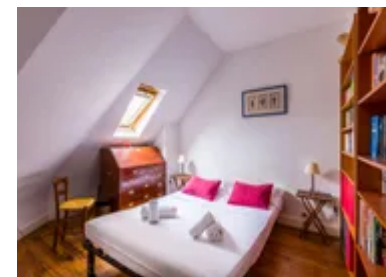
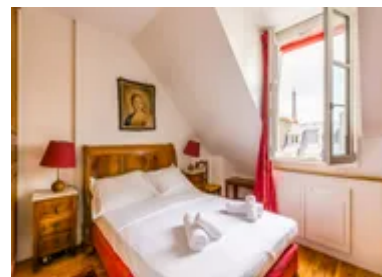
The neighbourhood is well-connected by public transport, with several metro stations nearby, allowing easy access to other parts of the city. You can wander through the charming streets lined with cafés, shops, and local markets, where you can savour authentic French cuisine and discover unique treasures.

Whether you're strolling along the Seine River or visiting the world-renowned museums and galleries in the vicinity, the location of Apartment Orsay provides the perfect blend of convenience and charm for an unforgettable Parisian holiday. Experience the vibrant atmosphere and cultural richness that make this city a favourite among travellers from around the globe.



Local Amenities

Nearest Airport	Paris Charles de Gaulle Airport (33 km)
Nearest Train Station	Invalides (400 m)
Nearest Supermarket	Supermarché G20 (350 m)
Sightseeing	Hôtel des Invalides (1 km)
Sightseeing	Eiffel Tower (1 km)
Sightseeing	Place de la Concorde (1 km)



What we love

- Enjoy breathtaking views of the Eiffel Tower right from your dining room—perfect for those Instagram moments!
- Relax in a bright, spacious living area, ideal for unwinding after a day of sightseeing
- Explore charming local cafés and shops just steps away, immersing yourself in the true Parisian experience!

What you should know...

- Please note that this apartment is on the eighth floor with access via stairs and lift
- Handy as the lift is, it only take you to the seventh floor, so there will be a short climb at the end
- Please note, this is a lived-in home, which we think adds to their charm! Guests should, however, expect to find homeowner belongings and personal items within the property

Terms & Conditions

- **Security deposit:**
- **Arrival time:** 15:00 - 21:00
- **Departure time:** 10:00
- **Energy costs included?:** Yes, included in the rental price.
- **Linen & towels included?:** Yes, included in the rental price.
- **Pets welcome?:** No pets allowed.
- **End of stay cleaning available?:** Yes. However, guests are required to leave the accommodation clean, tidy and in the same condition as on their arrival. Any extra cleaning, laundry, maintenance and/or rubbish disposal required will be charged against the security deposit.
- **Smoking Allowed?:** Smoking & Vaping are not permitted.
- **Insurance:** Guests are required to be in possession of a valid insurance policy, which covers them for cancellations, loss of personal belongings, personal liability and any accidental damage caused during their stay.
- **Minimum stay:** 2 nights.
- **Heating costs included?:** Yes, included in the rental price.
- **Tax:** Tourist Taxes are not included in the rental price and are to be paid locally in cash on arrival (the correct total per person per night will be sent to you after booking confirmation)
- **Internet access?:** Wi-Fi internet access included.
- **Stag & Hen Do Allowed? :** Weddings, stag/hen parties and any special events are not allowed.