

# Chalet Annie

Region: Chamonix Sleeps: 10

## Overview

Set against the awe-inspiring backdrop of Mont Blanc, Chalet Annie is a contemporary alpine retreat that captures the very best of Chamonix living throughout the seasons. Designed with natural textures, warm timber, and sleek modern finishes, it offers the perfect harmony of comfort and style for families or friends seeking an authentic mountain escape.

The spacious open-plan living area creates an inviting atmosphere for gathering after a day on the slopes, with a glowing fireplace, generous seating, and wide windows framing panoramic alpine views. The fully equipped kitchen and dining space set the scene for sociable dinners, while five beautifully finished bedrooms, four with their own en-suite bathrooms, ensure privacy and tranquillity.

Wellness and relaxation take centre stage here, with a private sauna and outdoor terrace where guests can unwind and soak in the crisp mountain air. In winter, the nearby Planpraz lift opens the door to world-class skiing and snowboarding, while the summer months reveal scenic hiking trails, cycling routes, and sparkling alpine lakes just moments away.

Located only a short stroll from Chamonix's vibrant centre, Chalet Annie offers easy access to restaurants, boutique shops, and après-ski bars, yet remains a calm sanctuary to return to each evening. With a blend of elegant design and mountain charm, it's a haven for every season, where adventure and relaxation meet at the heart of the French Alps.



## Facilities

Ideal for Xmas/NY • Walk to Village • Walking/Hiking Paths • Watersports • Canoeing/Kayaking • Historical Sites • Tennis Nearby • Skiing • Self-Catered • Paragliding • Cycling • Ski Chalet • Wellness • Walk To Slopes • Bus/Shuttle To Slopes • Mountain View • Ski Room • Boot Heaters • Ski Lift Nearby • Golf Nearby • Ideal for Kids • Ideal for Teens • Cots (Cribs) • Chef/Cook Available • Special Offer • Has Discount • Modern • Parking Space • Walk to Restaurant • Wi-Fi/Internet • Lakes and Mountains • Summer Chalet • Rural Location • Washing Machine • Outstanding Landscapes • Coffee Machine • Hairdryer • Outdoor Pursuit & Activities • Tourist Towns & Villages • Tumble Dryer • Dishwasher • Microwave • Electric Car Charger • Smart TV • Sauna/Steam • Working Fireplace/Woodburner • Heating • Transfers Available • Catering Available • Breakfast Available • Babysitting Available • Bathroom Toiletries • Ideal for Babies & Toddlers • High Chair(s)

# Interior & Grounds

## The Chalet (168 sqm)

### Interior

#### Lower Ground Floor

- Sauna
- Ski and boot room with boot heaters
- Laundry area

#### Ground Floor

- Open-plan living and dining room
- Fireplace
- TV
- Fully-equipped kitchen
- Bedroom 1: with double bed, TV, ensuite with shower and bath, sink, WC and heated towel rail

#### First Floor

- Bedroom 2: Double bed, TV, en-suite bathroom with shower, sink, WC, and heated towel rail
- Bedroom 3: Double bed, TV, en-suite bathroom with shower, sink, WC, heated towel rail, and access to terrace
- Bedroom 4: Double bed, TV, desk (ideal for remote work)
- Bedroom 5: Double bed, TV, en-suite bathroom with bath, shower, sink, WC, and heated towel rail

### Exterior

- Terrace with outdoor seating
- Garden
- Panoramic Views
- Parking

### Additional Facilities

- Wi-Fi
- Smart TV
- Sauna
- Fireplace
- Laundry facilities (washing machine and dryer)
- Ski/bicycle locker and boot heaters
- Hairdryer in all bathrooms
- Heating throughout



- Baby cot and high chair available on request

## Location & Local Information

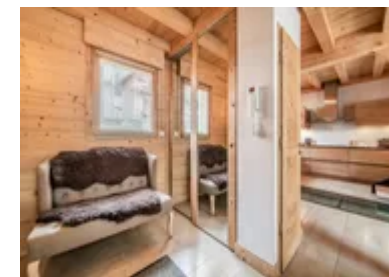
Chalet Annie enjoys a prime position in Chamonix, just moments from the resort's lively centre and surrounded by breathtaking views of Mont Blanc and the Aiguilles peaks. The Planpraz lift sits within easy reach, connecting guests to the vast slopes of the Brévent-Flégère ski area, where a mix of scenic runs and thrilling off-piste routes await skiers of every level.

After a day on the mountains, guests can stroll into town to discover Chamonix's vibrant après-ski scene, stylish restaurants, and cosy bars, all steeped in the resort's celebrated alpine spirit. In summer, the same location transforms into a paradise for outdoor enthusiasts, offering world-renowned hiking and biking trails, crystal-clear lakes, and access to the iconic Aiguille du Midi cable car for panoramic views across the Alps.

From mountain adventures to relaxed village life, Chalet Annie places you at the centre of it all, with the beauty and energy of Chamonix unfolding right on your doorstep.

### Local Amenities

Nearest Airport	<b>Geneva</b> (99.3 km)
Nearest Airport	<b>Chambery</b> (145 km)
Nearest Bar/Pub	<b>L'Hydromel</b> (350 m)
Nearest Bar/Pub	<b>Beer O'Clock - Chamonix</b> (400 m)
Nearest Golf	<b>Chamonix Golf Club</b> (4.3 km)
Nearest Piste	<b>Vioz (via Planpraz)</b> (1 km)
Nearest Piste	<b>Chatif (via Aiguille du Midi)</b> (2 km)
Nearest Restaurant	<b>Restaurant La Moraine</b> (400 m)
Nearest Ski Hire	<b>Chamonix Ski and Snowboard rental</b> (350 m)
Nearest Ski Lift	<b>Aiguille du Midi</b> (600 m)
Nearest Ski Lift	<b>Téléphérique de Planpraz</b> (1 km)



Nearest Supermarket	<b>SPAR</b> (450 m)
Nearest Tennis	<b>Tennis Club Chamonix</b> (2.1 km)
Nearest Town	<b>Chamonix Town</b> (750 m)
Nearest Train Station	<b>Chamonix Aiguille du Midi</b> (200 m)
Sightseeing	<b>Aiguille du Midi</b> (700 m)

---

## What we love

- Chalet Annie is situated just minutes from the vibrant centre of Chamonix, offering easy access to local restaurants and shops.
- The spacious open-plan living area features large windows that provide stunning views of the surrounding mountains.
- The ski and boot room with heaters keeps equipment organised and ready for the next adventure.
- Chalet Annie offers convenient access to both winter sports and summer hiking trails, making it an ideal year-round destination.

## What you should know...

- Its central location means you'll be close to the action, therefore some background noise is possible in peak season.
- Chamonix is a lively resort that hosts major sporting events throughout the year. Make sure you plan ahead to avoid travel or parking disruptions during these times.
- The chalet is set across multiple floors, with no lift access inside, therefore it may not be suitable for guests with limited mobility.

# Terms & Conditions

- **Security deposit:** On the day of your arrival, please note that a security deposit of €1500 will be pre-authorized on the credit card provided and released after departure, subject to full inspection.
- **Arrival time:** 16:00 - 00:00
- **Departure time:** 10:00
- **Energy costs included?:** Yes, included in the rental price.
- **Linen & towels included?:** Yes, included in the rental price.
- **Pets welcome?:** Not allowed.
- **Changeover day:** Flexible.
- **End of stay cleaning:** Standard changeover clean included in the price. Guests are required to leave the accommodation clean, tidy and in the same condition as on their arrival. Any extra cleaning, laundry, maintenance and/or rubbish disposal required will be charged against the security deposit.
- **Other Cleaning:** Mid-stay clean included for stays of 7+ nights
- **Smoking Allowed?:** Smoking & Vaping are not permitted.
- **Minimum stay:** 4-7 nights, can vary between seasons.
- **Heating costs included?:** Yes, included in the rental price.
- **Tax:** Tourist Tax included in the rental price.
- **Internet access?:** Wi-Fi internet access included.

**The chalet is available year-round, but facilities, property and local amenities may vary depending upon season.**