

Apartment Madlen

Region: Alpe d'Huez **Sleeps:** 4

Overview

Set high in the heart of Alpe d'Huez, Apartment Madlen offers a seamless blend of alpine authenticity and modern style, creating a refined base for every mountain escape. Perched on the third floor, this bright two-bedroom apartment captures sweeping views of the French Alps from its south-facing balcony, an ideal spot to savour morning coffee or an après-ski drink as the sun sets behind the peaks. Inside, the open-plan living area feels warm and inviting, with contemporary furnishings, soft lighting and panoramic windows framing the snow-dusted landscape beyond. A fully equipped kitchen and dining area make home-cooked meals a pleasure, while the lounge provides a cosy retreat after a day in the fresh mountain air.

Designed for up to four guests, Apartment Madlen includes two elegant double bedrooms – each with its own bathroom for added privacy and comfort. A private ski locker ensures an easy start to the day, and modern touches such as Wi-Fi, Smart TV and eco-friendly toiletries complete the experience.

In winter, guests are just moments from Alpe d'Huez's renowned slopes, with the nearest lift less than ten minutes away. Spend days skiing, snowboarding or snowshoeing before returning to the comfort of your alpine retreat. During summer, the resort transforms into a paradise of green meadows and winding trails – perfect for hiking, cycling and exploring the region's dramatic scenery. Whether you're chasing fresh powder or sunshine on the peaks, Apartment Madlen offers effortless mountain living in one of the Alps' most vibrant year-round destinations.

Facilities

Watersports • Ski Lift Nearby • Boot Heaters • Mountain View • Walk To Slopes • Lakes and Mountains • Washing Machine • Coffee Machine • Hairdryer • Paragliding • Self-Catered • Skiing • Cycling • Tennis Nearby • Walking/Hiking Paths • Wi-Fi/Internet • Golf Nearby • Fishing • Walk to Village • Chef/Cook Available • Cots (Cribs) • Modern • Summer Chalet • Chalet Apartment • Transfers Available • Catering Available • Breakfast Available • Babysitting Available • Ski Locker • Ideal for Babies & Toddlers • Ideal for Kids • Ideal for Teens • Walk to Restaurant • Dishwasher • Microwave • Smart TV • Heating • High Chair(s) • Outstanding Landscapes • Outdoor Pursuit & Activities • Tourist Towns & Villages



Interior & Grounds

The Apartment (65sqm)

Interior

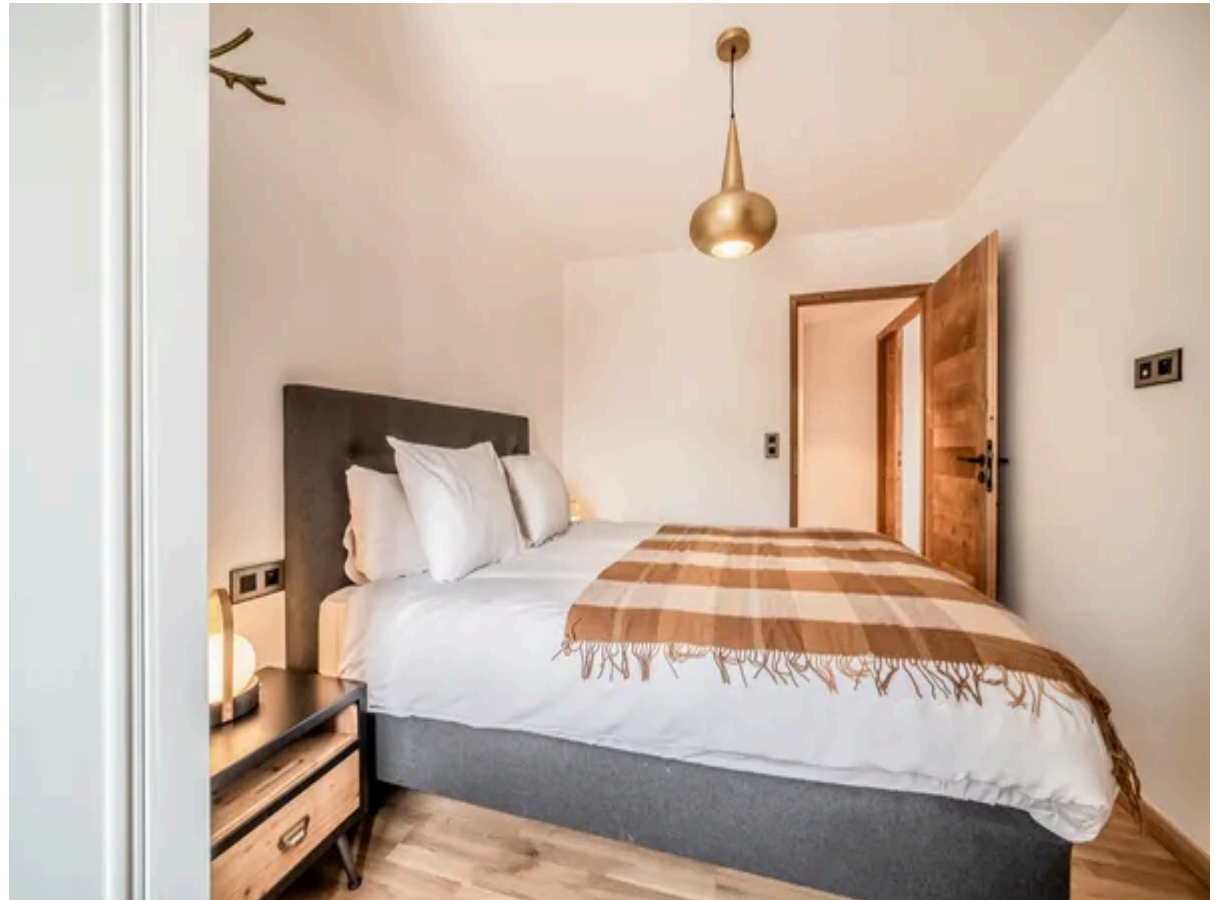
- Open-plan living room and kitchen
- Living room with sofa, TV
- Fully-equipped kitchen
- Dining room with table and chairs
- Bedroom 1: Double bed, ensuite bathroom with shower, WC, sink
- Bedroom 2: Double bed and separate bathroom with shower and bath in one and sink
- Separate WC
- Ski room with private ski locker

Outside Grounds

- Private balcony (7sqm) with outdoor seating and mountain views
- Walking distance to restaurants, shops and ski lifts

Additional Facilities

- Fully-equipped kitchen
- Hairdryer
- Private ski locker
- Shared comunal bike storage
- Smart TV
- Washing machine
- TV



Location & Local Information

Apartment Madlen enjoys an enviable setting in the heart of Alpe d'Huez, just a short stroll from the main ski lifts, local shops and restaurants. This prime position allows guests to make the most of the resort's vibrant winter atmosphere, with easy access to over 250 kilometres of world-class pistes. From first tracks to lively après-ski spots, everything is within reach, making it a perfect base for both couples and families looking to ski, snowboard or simply soak up the alpine scenery.

When the snow melts, Alpe d'Huez transforms into an outdoor playground filled with hiking trails, cycling routes and breathtaking viewpoints. Guests can take the cable car to Pic Blanc for panoramic views, visit the charming village of Huez or explore the region's heritage sites and family-friendly attractions. With cafés, bakeries and ski hire shops all within walking distance, Apartment Madlen places you right at the centre of the action all year round.

Local Amenities

Nearest Airport	Grenoble (105 km)
Nearest Airport	Lyon (154 km)
Nearest Bar/Pub	Indiana Bar (80 m)
Nearest Equipment Hire	Cycle Huez (280 m)
Nearest Golf	Golf de l'Alpe d'Huez (1.2 km)
Nearest Piste	Léopold (10 m)
Nearest Piste	Signal (Via Télécentre) (600 m)
Nearest Restaurant	Le Roy Ladre (80 m)
Nearest Shop	Jannin Jean-Luc Bakery (280 m)
Nearest Ski Hire	Skiset (75 m)
Nearest Ski Lift	Télécentre (50 m)



Nearest Supermarket	Carrefour Montagne (100 m)
Nearest Tennis	L'Aparté Tennis (1.1 km)
Nearest Village	L'Alpe d'Huez (300 m)

What we love

- The Apartment is located on the third floor, we had stunning views of the French Alps!
- Whether visiting in winter or summer, guests can enjoy a range of family-friendly adventures within a short distance.
- The apartment includes a fully equipped kitchen and a ski locker for added convenience.
- Apartment Madlen offers a stylish, spacious two-bedroom retreat with modern comforts and stunning mountain views.

What you should know...

- The apartment is located in the heart of Alpe d'Huez and offers easy access to the resort's main ski lifts and outdoor activities.
- Alpe d'Huez can be lively during peak season, so expect some buzz around the resort.
- While the apartment sleeps four comfortably, both bedrooms feature double beds, ideal for two couples or a small family.
- There is a communal bike storage area which, although shared, is secure and ideal for safely storing your gear after a day of riding.

Terms & Conditions

- **Security deposit:** On the day of your arrival, please note that a security deposit of €500 will be pre-authorised on the credit card provided and released after departure, subject to full inspection.
- **Arrival time:** 16:00 - 00:00
- **Departure time:** 10:00
- **Energy costs included?:** Yes, included in the rental price.
- **Linen & towels included?:** Yes, included in the rental price.
- **Pets welcome?:** Not allowed.
- **Changeover day:** Flexible, depending on season
- **End of stay cleaning available?:** Yes, included in the rental price, along with a mid-stay clean (if staying for 7-nights or more) including a towel change and toiletry refill. Guests are required to leave the accommodation clean, tidy and in the same condition as on their arrival. Any extra cleaning, laundry, maintenance and/or rubbish disposal required will be charged against the security deposit.
- **Smoking Allowed?:** Smoking & Vaping are not permitted.
- **Minimum stay:** 4-7 nights, can vary between seasons.
- **Heating costs included?:** Yes, included in the rental price.
- **Tax:** Tourist Tax included in the rental price.
- **Internet access?:** Wi-Fi internet access included.
- **Stag & Hen Do Allowed? :** Not allowed.

The chalet is available year-round, but facilities, property and local amenities may vary depending upon season.