

Apartment Saxe

Region: Paris Sleeps: 4

Overview

Nestled on the prestigious Avenue de Saxe, Apartment Saxe is a wonderfully designed apartment that places you in the heart of one of Paris's most iconic neighbourhoods. With the Eiffel Tower, Hôtel des Invalides, and Musée Rodin just a short stroll away, you'll find yourself surrounded by the city's best cultural gems, charming street markets, and hidden cafés. This is a place where the vibrant buzz of Paris meets the quiet comfort of a well-thought-out space.

Stepping into the apartment, you're immediately welcomed by a bright and airy living and dining room. Large windows bathe the room in natural light, creating an open and inviting atmosphere. The blend of vintage furniture and playful pops of colour brings a light-hearted touch to the space, while the sleek design ensures it remains contemporary. The comfortable sofa corner invites you to relax and watch the world go by on the avenue below, or perhaps enjoy a meal at the spacious dining table, perfect for sharing food, conversation, and laughter with friends and family.

As you explore further, you'll discover a charming guest bedroom tucked away through glass doors. This cosy room doubles as a little library, filled with striking blue accents, and is equipped with a double sofa bed, making it ideal for extra guests or a quiet retreat.

With its clean, modernist design, the kitchen is a space where you can enjoy cooking or simply sipping a morning coffee. Fully equipped with all the essentials, it's easy to feel at home here, whether you're whipping up a quick meal or enjoying a leisurely breakfast before heading out to explore.

The principal bedroom is a cheerful retreat, with zingy lime



green tones that set the mood for a refreshing night's sleep. There's plenty of storage, and the Queen-sized bed ensures comfort at the end of each busy day. Just down the hall, the first bathroom continues the green theme with fresh mint hues, featuring a bath and overhead shower.

For families or young travellers, the child's bedroom offers a warm and welcoming space, with a turquoise sofa and bright yellow accents. A single sofa bed caters to children under twelve, making it a cosy corner for little ones. The second bathroom, with sleek coffee-coloured interiors and a spacious walk-in shower, adds a touch of calm luxury to the apartment.

Outside, you're greeted by the picturesque Avenue de Saxe. Its historic Haussmannian buildings and leafy trees provide a beautiful view every morning — an enviable setting for your Parisian adventure. This apartment feels like a home from the moment you arrive, offering the perfect base to enjoy the best of Paris.

Facilities

City Homes & Apartments • Ideal for Kids • Historical Sites • Romantic • Special Offer • Has Discount • Wow Factor • Ideal for Teens • <1hr to Airport • Walk to Restaurant • Wi-Fi/Internet • Easy By Train • Washing Machine • Hairdryer • Tourist Towns & Villages • Microwave • Heating • Ideal for Babies & Toddlers

Interior & Grounds

The Apartment

Interior

- Open plan living and dining room with a comfy sofa corner and generously sized dining table
- Well-equipped kitchen
- Master Bedroom 1: Queen-size bed and wardrobe space
- Bathroom with bath and overhead shower
- Bedroom 2: Double sofa bed and handy desk space
- Bedroom 3: Cosy kid's bedroom with a single sofa bed (only suitable for a child under 12)
- Bathroom with walk-in shower

Additional Facilities

- Wi-Fi
- Heating
- Linen and towels
- Washing machine
- Hair dryer



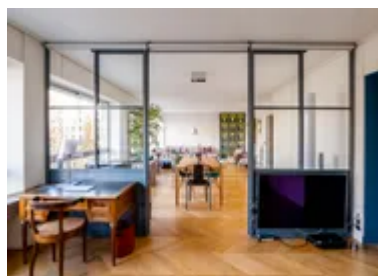
Location & Local Information

Apartment Saxe is ideally located on Avenue de Saxe, one of Paris's most sought-after streets, in the heart of the 7th arrondissement. This central location offers a perfect base for exploring the city's rich history, culture, and architecture. Just a short walk away, you'll find some of Paris's most iconic landmarks, including the Eiffel Tower, Hôtel des Invalides, and the Musée Rodin, making it easy to immerse yourself in the city's art and heritage. The neighbourhood itself is known for its elegant Haussmannian buildings, leafy avenues, and charming street markets, offering a more relaxed and authentic Parisian experience.

Within walking distance, you can also explore the upscale shops of Rue Cler, a lively market street known for its fresh produce and gourmet food shops. The nearby Champ de Mars park provides a lovely spot to relax with a view of the Eiffel Tower, while the vibrant cafés and bistros around the area offer a taste of local Parisian life. With excellent transport links and the Seine River just a stone's throw away, Apartment Saxe is the perfect location to discover all that Paris has to offer.

Local Amenities

Nearest Airport	Paris Charles de Gaulle Airport (37 km)
Nearest Train Station	École Militaire (50 m)
Nearest Supermarket	Carrefour City (53 m)
Sightseeing	Hôtel des Invalides (750 m)
Sightseeing	Eiffel Tower (1 km)
Sightseeing	Place de la Concorde (2 km)



What we love

- Walk to iconic sights like the Eiffel Tower and Musée Rodin in just minutes – perfect for exploring Paris at your doorstep
- Bright, modern interiors with pops of colour make this apartment feel fun and welcoming
- Relax on a charming, tree-lined avenue with local markets and cafés just around the corner

What you should know...

- The apartment boasts a cosy kid's bedroom featuring a single sofa bed — only suitable for a child under 12
- This apartment is on the 4th floor with lift access
- There are no shutters in the bedrooms only blinds

Terms & Conditions

- **Arrival time:** 15:00 - 21:00

- **Departure time:** 10:00

- **Energy costs included?:** Yes, included in the rental price.

- **Linen & towels included?:** Yes, included in the rental price.

- **Pets welcome?:** No pets allowed.

- **End of stay cleaning available?:** Yes. However, guests are required to leave the accommodation clean, tidy and in the same condition as on their arrival. Any extra cleaning, laundry, maintenance and/or rubbish disposal required will be charged against the security deposit.

- **Smoking Allowed?:** Smoking & Vaping are not permitted.

- **Insurance:** Guests are required to be in possession of a valid insurance policy, which covers them for cancellations, loss of personal belongings, personal liability and any accidental damage caused during their stay.

- **Minimum stay:** 2 nights.

- **Heating costs included?:** Yes, included in the rental price.

- **Tax:** Tourist Taxes are not included in the rental price and are to be paid locally in cash on arrival (the correct total per person per night will be sent to you after booking confirmation)

- **Internet access?:** Wi-Fi internet access included.

- **Stag & Hen Do Allowed? :** Weddings, stag/hen parties and any special events are not allowed.