

Apartment Vaneau

Region: Paris Sleeps: 4

Overview

Nestled in the heart of Paris's 6th arrondissement, Apartment Vaneau offers a perfect base for those wanting to experience the timeless charm of this iconic neighbourhood. Just steps away from the lively streets of Saint-Germain-des-Prés, you'll find yourself immersed in the artistic and literary history of the area, with its traditional cafés, bars, and bistros that have long been a gathering place for creative minds.

Stepping inside, you're greeted by a modern, inviting atmosphere. The living room, bathed in natural light from the large windows, boasts crisp white walls and a floral painting that brings a calming touch to the space. It's the perfect spot to unwind after a day exploring the city, with plush lounge furniture, a coffee table, and a TV. For added convenience, a designer double sofa bed offers additional sleeping space should you need it.

The dining area, just off the living room, is a real treat. It's bright and airy, with large windows offering views of the elegant Haussmannian architecture that defines this historic district. Whether you're enjoying a quiet meal or simply soaking in the Parisian ambience, this space provides a peaceful backdrop for any occasion.

The kitchen is contemporary and fully equipped with everything you need for a self-catering stay, including an oven, microwave, and dishwasher. Whether you're preparing a simple breakfast or an evening meal, it's easy to feel right at home here.

The bedroom is a serene retreat, with a subtle bluebell-themed wall art that adds a touch of character to the space. The king-sized bed promises restful nights, while the chest of drawers offers plenty of storage for your belongings.



The bathroom is a visual delight, with tropical wallpaper and geometric floor tiles creating a striking contrast. It features a bath with an overhead shower, a wash basin, and a toilet – everything you need for a refreshing start to the day.

Outside, you're surrounded by the charm of one of Paris's most celebrated neighbourhoods. Be sure to visit nearby attractions like the Musée Bourdelle, dedicated to the work of the renowned sculptor, or the Musée Maillol, home to modern art exhibitions. With so much to explore, Apartment Vaneau is the perfect place to experience Parisian life at its finest.

Facilities

City Homes & Apartments • Romantic • Historical Sites • Special Offer • Has Discount • Not For Little Ones • <1hr to Airport • Walk to Restaurant • Wi-Fi/Internet • Easy By Train • Washing Machine • Coffee Machine • Hairdryer • Tourist Towns & Villages • TV • Tumble Dryer • Smart TV • Heating

Interior & Grounds

The Apartment

Interior

- Refined living area with plush lounge furniture, coffee table, TV and double sofa bed
- Dining room with genteel Haussmannian architecture
- Fully equipped kitchen
- Master Bedroom 1: King-size bed and chest of drawers
- Bathroom

Additional Facilities

- Wi-Fi
- Heating
- Linen and towels
- Washing machine and dryer
- LCD flat-screen TV



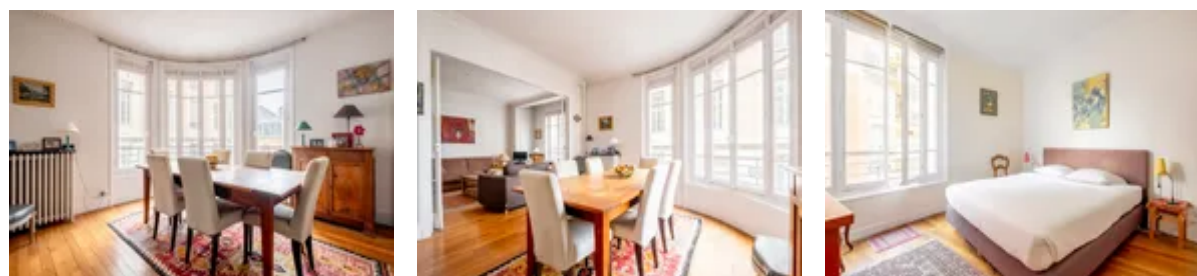
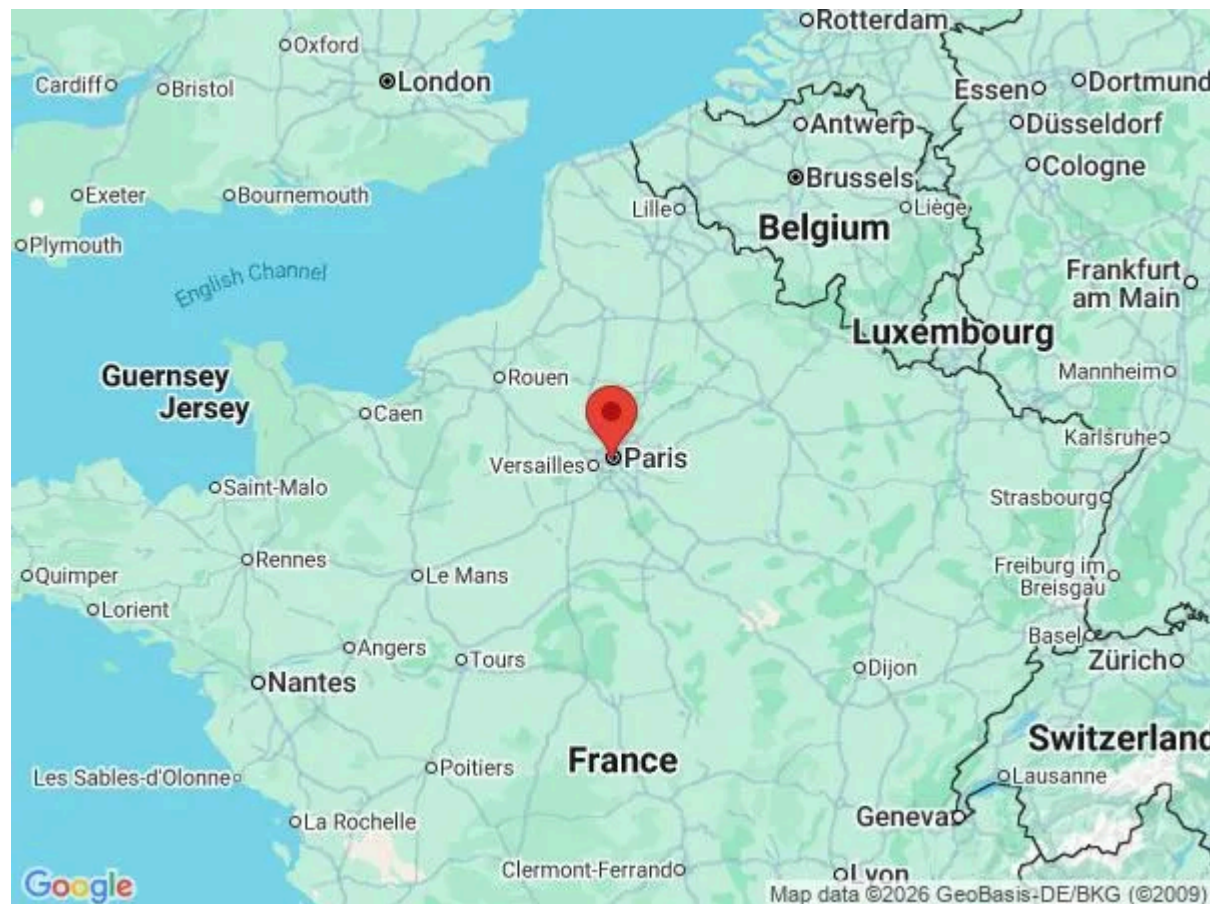
Location & Local Information

Apartment Vaneau is ideally located in the vibrant 6th arrondissement of Paris, one of the city's most sought-after neighbourhoods. Nestled close to the charming streets of Saint-Germain-des-Prés, this area is rich in history, culture, and Parisian flair. Known for its bohemian past, Saint-Germain has long been a hub for artists, writers, and intellectuals, making it a fascinating place to explore. The neighbourhood is dotted with traditional cafés, bistros, and bookshops, offering a glimpse into the Paris of the past, while also boasting a mix of contemporary shops and galleries.

From here, you'll have easy access to some of Paris's most iconic landmarks. The famous Luxembourg Gardens are just a short walk away, providing a tranquil escape in the heart of the city. The Musée Bourdelle, dedicated to the work of the sculptor Antoine Bourdelle, is just minutes from your doorstep, while the Musée Maillol showcases modern art. With excellent transport links, including the nearby Vaneau Metro station, Apartment Vaneau is the perfect base for discovering all that Paris has to offer.

Local Amenities

Nearest Airport	Paris Charles de Gaulle Airport (35 km)
Nearest Train Station	Vaneau (200 m)
Nearest Supermarket	Franprix (150 m)
Sightseeing	Hôtel des Invalides (1 km)
Sightseeing	Panthéon (2 km)
Nearest Airport	Eiffel Tower (3 km)



What we love

- Steps from the charming cafés and boutiques of Saint-Germain-des-Prés – perfect for a Parisian stroll
- Bright, stylish interiors with a cosy living space for relaxing after a day of exploring
- A peaceful bedroom with a king-sized bed, ensuring a restful night's sleep in the heart of Paris

What you should know...

- Please note, this is a lived-in home, which we think adds to the charm! Guests should, however, expect to find homeowner belongings and personal items within the property
- Although there is no microwave, there is a mini oven that can heat at 60°C and defrost
- A double sofa bed can be found in the living room
- The apartment is located on the third floor and can be accessed by a lift

Terms & Conditions

- **Arrival time:** 15:00 - 21:00

- **Departure time:** 10:00

- **Energy costs included?:** Yes, included in the rental price.

- **Linen & towels included?:** Yes, included in the rental price.

- **Pets welcome?:** No pets allowed.

- **End of stay cleaning available?:** Yes. However, guests are required to leave the accommodation clean, tidy and in the same condition as on their arrival. Any extra cleaning, laundry, maintenance and/or rubbish disposal required will be charged against the security deposit.

- **Smoking Allowed?:** Smoking & Vaping are not permitted.

- **Insurance:** Guests are required to be in possession of a valid insurance policy, which covers them for cancellations, loss of personal belongings, personal liability and any accidental damage caused during their stay.

- **Minimum stay:** 2 nights.

- **Heating costs included?:** Yes, included in the rental price.

- **Tax:** Tourist Taxes are not included in the rental price and are to be paid locally in cash on arrival (the correct total per person per night will be sent to you after booking confirmation)

- **Internet access?:** Wi-Fi internet access included.

- **Stag & Hen Do Allowed? :** Weddings, stag/hen parties and any special events are not allowed.