

# Apartment Anjou

Region: Paris   Sleeps: 4

---

## Overview

Tucked away in the elegant Madeleine district, Apartment Anjou is a charming two-bedroom apartment that invites you to experience the heart of Paris in comfort and style. With its traditional décor and welcoming atmosphere, it's the perfect home-from-home for those seeking a taste of the city's sophisticated charm.

As you step inside, the living room greets you with its warm, inviting feel. Regency-style chairs, antique furnishings, and soft, ambient lighting set a tranquil tone, making it the ideal place to unwind after a day of sightseeing. The bold yellow drapes add a regal touch, complementing the leopard-print sofa and decorative fireplace that create a relaxed, cosy space.

Moving into the dining room, you'll find an elegant setting for both everyday meals and special occasions. The space is bathed in soft chandelier light, with a traditional oak dining table as its centrepiece. Classical artwork on the walls completes the scene, making it an ideal spot to enjoy a meal or host friends.

The kitchen retains a traditional character, with wood-panelled cabinets and a charming breakfast table. Equipped with all the essentials—including an oven, hob, dishwasher, and washing machine—it's the perfect spot for preparing a meal to enjoy in or out.

The principal bedroom exudes a cultured vibe, with soft yellow hues, landscape art, and antique pieces like the vintage bookshelf and drawers. The double bed promises a restful night's sleep, while the second bedroom, painted in calming milk and honey tones, also features a double bed and a flat-screen TV for your entertainment.

The bathroom, sleek and spacious, is lined with elegant



marble tiles, offering both a shower and a double wash basin, perfect for getting ready before a night out.

Outside, the charming Parisian neighbourhood awaits, with the iconic Maxim's restaurant just a short stroll away.

Whether you're enjoying a quiet morning coffee in the apartment or stepping out to explore the best of the city, Apartment Anjou offers an ideal base for your Parisian getaway.

## Facilities

Romantic • Historical Sites • City Homes & Apartments • Has Discount • Special Offer • <1hr to Airport • Walk to Restaurant • Wi-Fi/Internet • Easy By Train • Washing Machine • Coffee Machine • Tourist Towns & Villages • TV • Microwave • Smart TV • Heating

# Interior & Grounds

## The Apartment

### Interior

- Living room with regency chairs, antique furniture and a leopard print sofa
- Dining room with chandelier lighting, traditional oak table and classical artwork
- Charming, well-equipped kitchen
- Master Bedroom 1: Double bed, landscape art, antique drawers and vintage bookshelf
- Bedroom 2: Double bed and flat-screen TV
- Bathroom

### Additional Facilities

- Wi-Fi
- Heating
- Linen and towels
- Smart TV
- Hairdryer
- Washing machine



## Location & Local Information

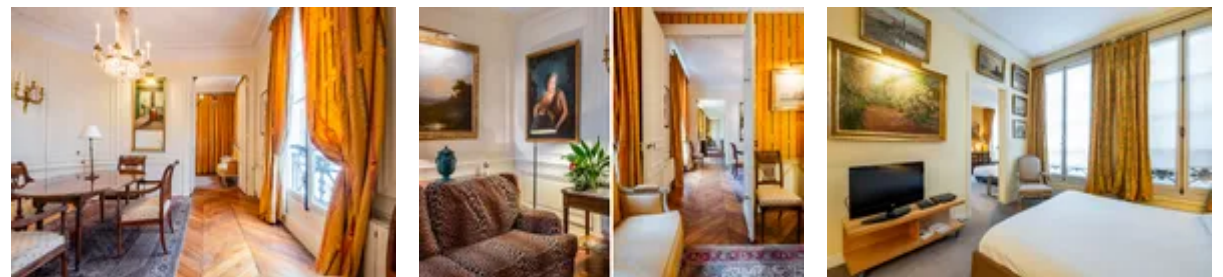
Apartment Anjou is ideally situated in the heart of Paris's prestigious Madeleine district, making it an excellent base for exploring the city's iconic attractions. Just a short walk away, you'll find the historic Place de la Concorde, where the River Seine meets the Champs-Élysées. The renowned shopping street, Rue Saint-Honoré, is nearby, offering a blend of high-end boutiques and Parisian cafés perfect for a leisurely afternoon.

The area is steeped in culture, with the magnificent Palais Garnier opera house just moments away, as well as a wealth of museums and galleries to explore, including the Musée du Louvre, a twenty-minute stroll away. For those seeking culinary delights, the famous Maxim's restaurant is just a few streets away, providing an authentic Parisian dining experience.

With excellent transport links, including the Madeleine metro station nearby, Apartment Anjou offers convenient access to all of Paris. Whether you're looking to indulge in world-class shopping, immerse yourself in Parisian history, or simply enjoy the atmosphere of one of the city's most elegant neighbourhoods, this location provides the perfect setting for a memorable holiday.

### Local Amenities

Nearest Airport	Paris Charles de Gaulle Airport (32 km)
Nearest Train Station	Madeleine (450 m)
Nearest Supermarket	Franprix (110 m)
Sightseeing	Place de la Concorde (750 m)
Sightseeing	Palais Garnier (1 km)
Sightseeing	Louvre Museum (2 km)



## What we love

- A cosy, traditional-style apartment right in the heart of Paris—perfect for exploring the city's iconic sights
- Stroll to world-class shopping, dining, and cultural landmarks like the Palais Garnier and Maxim's
- A charming, peaceful retreat with antique furniture and warm, inviting interiors to relax after a day of sightseeing

## What you should know...

- Please note, the two bedrooms are linked by a connecting door
- Refurbishment work is currently taking place outside the building from 8am - 5pm, Mondays to Saturdays, until December 2024, so be aware of potential noise intrusion
- Please note that this is a lived-in home, which we think adds to the charm! Guests should, however, expect to find homeowner belongings and personal items within the property

# Terms & Conditions

- **Arrival time:** 15:00 - 21:00

- **Departure time:** 10:00

- **Energy costs included?:** Yes, included in the rental price.

- **Linen & towels included?:** Yes, included in the rental price.

- **Pets welcome?:** No pets allowed.

- **End of stay cleaning available?:** Yes. However, guests are required to leave the accommodation clean, tidy and in the same condition as on their arrival. Any extra cleaning, laundry, maintenance and/or rubbish disposal required will be charged against the security deposit.

- **Smoking Allowed?:** Smoking & Vaping are not permitted.

- **Insurance:** Guests are required to be in possession of a valid insurance policy, which covers them for cancellations, loss of personal belongings, personal liability and any accidental damage caused during their stay.

- **Minimum stay:** 2 nights.

- **Heating costs included?:** Yes, included in the rental price.

- **Tax:** Tourist Taxes are not included in the rental price and are to be paid locally in cash on arrival (the correct total per person per night will be sent to you after booking confirmation)

- **Internet access?:** Wi-Fi internet access included.

- **Stag & Hen Do Allowed? :** Weddings, stag/hen parties and any special events are not allowed.