

Apartment Hesse

Region: France **Sleeps:** 6

Overview

Discover the perfect blend of modern comfort and Parisian charm in this stylish two-bedroom apartment in the heart of Paris. The interior boasts a warm and inviting atmosphere, with elegant wooden floors and large windows that bathe the space in natural light. The living room features tasteful décor, a comfortable sofa, and a dining area ideal for unwinding or sharing a meal. A fully equipped kitchen includes everything you need for home-cooked meals, from a stovetop to a coffee maker. The two spacious bedrooms offer plush bedding and ample storage, providing a restful retreat after a day exploring the city.

Located in a quintessential Parisian neighbourhood, Apartment Hesse is surrounded by charming cafes, boutique shops, and local markets. Just steps away, enjoy a quiet courtyard for a morning coffee or an evening glass of wine. Excellent public transport connections make exploring iconic landmarks like the Eiffel Tower, Notre Dame, or the Louvre seamless and convenient. Whether you're here for a romantic getaway or a family adventure, this apartment is your ideal Parisian home base.

Facilities

Wi-Fi/Internet • Laptop Friendly Workspace • Easy By Train • Romantic • Lift • City Homes & Apartments • Walk to Restaurant • <1hr to Airport • Washing Machine • Tumble Dryer • Dishwasher • Microwave • Coffee Machine • Hairdryer • TV • Heating • Tourist Towns & Villages • Historical Sites



Interior & Grounds

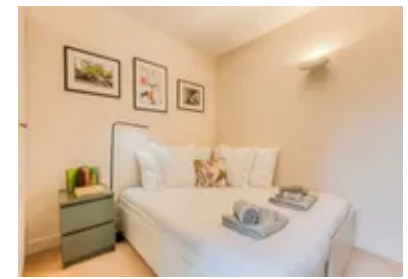
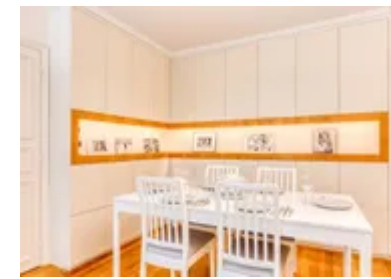
The Apartment

Interior

- Spacious living space with an elegant lounge and dining area
- Fully equipped kitchen
- Bedroom 1: queen-size bed
- Bedroom 2: queen-size bed
- Bedroom 3: king-size bed
- Large bathroom with a bathtub
- Separate toilet

Additional Facilities

- Lift
- Wi-fi
- TV
- Heating
- Dedicated workspace
- Garden view



Location & Local Information

Nestled in the vibrant Marais district, Apartment Hesse offers an unbeatable location for discovering Paris's cultural treasures. Stroll to iconic attractions like the Picasso Museum and Place des Vosges, or indulge in the area's trendy boutiques, art galleries, and charming cafes. The bustling markets and gourmet restaurants nearby provide an authentic taste of Parisian life. This address ensures easy access to landmarks like Notre Dame and the Louvre just minutes from public transport. Whether you're an art enthusiast, a history lover, or a foodie, this central location is the perfect gateway to Paris's allure.

Local Amenities

Nearest Airport	Paris Charles de Gaulle Airport (27 km)
Nearest Train Station	Chemin Vert (300 m)
Nearest Supermarket	G20 Supermarché (120 m)
Sightseeing	Sainte-Chapelle (2 km)
Sightseeing	Louvre Museum (3 km)
Sightseeing	Place de la Concorde (4 km)



What we love

- The prime Marais location is near top Paris attractions like the Picasso Museum and Place des Vosges
- Spacious two-bedroom apartment, perfect for families or small groups
- Surrounded by charming cafes, boutique shops, and gourmet restaurants
- Easy access to public transport for exploring the city
- Kid-friendly with nearby parks, playgrounds, and family-oriented amenities

What you should know...

- The apartment is in a bustling area; noise levels may sometimes be higher
- Limited elevator access or stairs may pose challenges for strollers or mobility-impaired guests

Terms & Conditions

- **Security deposit:** €750 charged to client's credit card as a pre-authorisation two weeks before arrival and refunded two weeks after departure, subject to full inspection.
- **Arrival time:** 15:00 - 20:00
- **Departure time:** 11:00
- **Energy costs included?:** Yes, included in the rental price.
- **Linen & towels included?:** Yes, included in the rental price.
- **Pets welcome?:** Not allowed.
- **Changeover day:** Flexible.
- **End of stay cleaning available?:** Yes. However, guests are required to leave the accommodation clean, tidy and in the same condition as on their arrival. Any extra cleaning, laundry, maintenance and/or rubbish disposal required will be charged against the security deposit.
- **Smoking Allowed?:** Smoking & Vaping not permitted.
- **Minimum stay:** 3 night. All other durations on request.
- **Heating costs included?:** Yes, included in the rental price.
- **Tax:** There is a city tax due to be paid locally which is not included in the rental rate. The amount will be confirmed by your onsite representative when you arrive.
- **Internet access?:** Wi-Fi internet connection included.