

# Domaine de l'Eglise

Region: Normandy    Sleeps: 24

---

## Overview

\*Please note that specific features may vary for each property within the estate. For details, please refer to the facilities list for each individual property.

The beautiful Domaine de L'Eglise allows you the opportunity to stay on a historic estate in Normandy, only 3.5km from the sea. This is the Cotentin peninsula, famed for its vast sandy beaches, important WWII sites and charming seaside villages with restaurants serving freshly harvested oysters and *moules-frites*.

This prestigious estate sleeps up to 24 guests across four elegant dwellings, each one with its own living spaces, kitchen and en suite bedrooms. The origins of the *domaine* go as far back as the 17th century and each new home has a different story to tell having been brought back to life following a remarkable restoration.

Starting off with the main residence sleeping 8 guests, Manoir Cotentin, dating back to the time of Louis XIII. Appreciate its exquisite architecture, refined furnishings and graceful décor. We adore the historic elegance of the living and dining room whilst the four double bedrooms upstairs add to the romance – one even has its own roll top bath hidden behind the pretty curtains.

The former stables, Hippocampe, have also undergone a superb renovation, now an inviting holiday home for 6 guests in the south wing of the *manoir*. There's an equestrian theme across the light-filled living and dining space with its open-plan kitchen whilst the cleverly designed stairs take you up to three gorgeous bedrooms, all en suite.

Next to the Manoir and former stables is La Marine with its intricately restored façade. This detached home has been split into two apartments – one on the ground floor with an overall traditional atmosphere, the other upstairs with lofty ceilings and blue-hued décor inspired by the sea. La Marine hosts 4 guests on each floor - each self-contained apartment has its own living-dining area, kitchen and two en suite bedrooms.

Finally, Le Cormoran awaits, the most unique abode of the estate, a hexagonal tower that was once a *pigeonnier* in the 1600s. It's truly amazing that over 2000 nesting holes have been preserved and restored in the top-floor master bedroom with its king-size bed and round copper bath. Quirky steps lead back down to the characterful living space with a large fireplace and well-equipped kitchen, perfect for up to 2 guests.

This wonderful *domaine* would be ideal for an extended family holiday, a special meet-up with friends or a romantic wedding in Normandy. When hiring the estate exclusively, guests can gather in the garden for al-fresco feasts as the church bells chime and make the most of the beautiful parkland



with lovely lawns, old château ruins, summer roses, herbs and the large natural pond.

Using the estate's bikes, cycle to the beach just 3.5km away for vast sandy shores backed by colourful beach houses – it really is a charming ambience. Utah Beach is just 10km away, home to the Utah Beach Landing Museum, or head north to the magnificent Plage de Quinéville. Across this coastline discover golf, summer horse-riding, sand-yachting and other water-based adventures.

Nearby Sainte-Mère-Église played a vital role in June 1944 as the first village to be liberated by Allied forces. Visit its lovely market on a Thursday morning and pick up sweet treats from its biscuit shop.

Saint-Vaast-la-Hougue is the place to go for oysters overlooking the port, perhaps after a trip to Tatihou Island reached via an amphibious craft crossing the oyster beds at low tide. Try mussels and *frites* in Barfleur or spend the day in Cherbourg with its great maritime heritage.

Other regional highlights include historic Bayeux and the D-Day Landing beaches of Omaha and Arromanches-les-Bains. Mont Saint-Michel is another gem of northern France, one of the country's most visited destinations and less than a 2-hour drive from your historic Normandy estate.

*Photography by Pascal Othlinghaus & Eric Sanders*

## Facilities

Beach Nearby • Rural Location • Romantic • Walk to Village • Watersports • Tennis Nearby • Cots (Cribs) • Quirky (Unique) • Bicycles Provided • Laptop Friendly Workspace • Golf Nearby • Wi-Fi/Internet • Weddings • Maid Service Available • Manor • Instagrammable • Heritage Collection • Kid-friendly museum • Kid-friendly excursions • Water excursions/Boat trips • Breakfast Available • Ideal for Babies & Toddlers • Pets on Request • Dishwasher • Microwave • Coffee Machine • All Bedrooms En-Suite • Ground Floor Bed & Bath • Working Fireplace/Woodburner • High Chair(s) • Parking Space • Walking/Hiking Paths • Cycling • Horse Riding • Fishing • Outstanding Landscapes • Outdoor Pursuit & Activities • Tourist Towns & Villages • Historical Sites

# Interior & Grounds

## Manoir Cotentin Interiors (220m2, 8 guests)

- Living room with fireplace and French windows leading to park
- Dining room
- Kitchen

*Upstairs (low wood beams in some rooms)*

- Bedroom with double bed and en suite bathroom
- Bedroom with double bed and en suite bathroom
- Bedroom with double bed and en suite bathroom
- Bedroom with double bed and en suite bathroom (behind the curtain)

## Hippocampe Interiors (120m2, 6 guests, in south-wing of the *manoir*)

*Ground Floor*

- Open-plan lounge and dining area with doors opening out to terrace area with table and chairs
- Open-plan kitchen

*Upstairs (some sloping ceilings)*

- Bedroom with double bed and open en suite bathroom
- Bedroom with double bed and en suite bathroom
- Bedroom with double bed and en suite bathroom

## La Marine Interiors (8 guests across two self-contained apartments)

*Ground Floor Apartment (100m2)*

- Living room and fireplace
- Dining area
- Kitchen, well-equipped
- WC
- 2 x bedrooms with double bed and en suite bathroom

*First Floor Apartment (100m2, some sloping ceilings)*

- Open-plan lounge
- Open-plan kitchen and high table with seats
- 2 x bedrooms with double bed and en suite bathroom

## Le Cormoran Interiors (2 guests)

*Main Level (via steps)*

- Entrance
- Open-plan seating and dining area with fireplace
- Open-plan kitchen

*Upstairs (via curved, open-tread stairs)*

- Open-plan bedroom with king-size double bed (180x200cm)
- Open-plan bathroom with round copper bath tub, overhead shower, sink



and WC

*There is also a lower floor/basement (via narrow spiral staircase) with a bedroom, however this is not available to guests. Le Cormoran is not suitable for children.*

#### **Outside Grounds**

- Various terrace areas for al-fresco dining
- Barbecues
- Bikes
- Parkland/estate with stone ruins, gardens, pond/canal
- Parking (near entrance of estate, a short walk)



## Location & Local Information

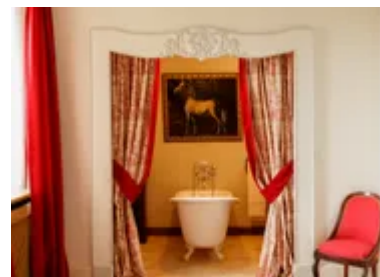
This 17th century estate is located on the Cotentin peninsula only 48km from Cherbourg ferry port.

Discover the small village a short walk away with a shop and restaurant. There is a second restaurant sometimes open on the edge of the village and one by the coast (a short drive/cycle away) – as always, check seasonal opening dates for local restaurants. Right next to Domaine de l'Église there is a traditional church with bells ringing from 7.00 a.m. to 10.00 p.m. (and every half hour in between for a shorter time).

Bikes are provided and it's fantastic to be able to cycle along the country road passing typical farmland and waterways until you reach the vast sandy beach around 3.5km away. Admire the colourful beach houses facing the sea, allow children to let off a little steam at a little playground and, if staying in the height of the summer, check to see if the little kiosk is open selling fresh oysters. When the sea is close you can paddle or swim in the English channel or enjoy long walks along the coast as the tide goes out. Within a short drive come across summer horse-riding as well as sand-yachting and other water-based activities.

This region is famed for its WWII heritage. The estate is well located for visiting important sites, fascinating museums and memorials both in the countryside and along the coast. To the north is Plage de Quinéville (9km) and the World War II Museum whilst the Utah Landing Beach Museum is 10km by car. Sainte-Mère-Église (6.5km) was the first village to be liberated by Allied forces in 1944 – visit on a Thursday morning to enjoy its charming market. Further WWII museums include Château de Franquetot (11km) and the D-Day Experience (17km, close to the beautiful landscapes of the Cotentin and Bessin Marshes Regional Natural Park). Further afield, Omaha (52km) and Arromanches-les-Bains (71km) are other iconic D-Day Landing beaches.

Saint-Vaast-la-Hougue (20km) is loved for its harbourside



restaurants serving fresh oysters and traditional dishes. Before or after lunch, venture to the two Vauban Towers, both UNESCO World Heritage sites, one just south of Saint-Vaast-la-Hougue, the other on the wonderful Tatihou Island (reached via an amphibious boat), also home to botanical gardens and a wild coastline. Another picturesque spot for lunch is Barfleur (27km) – when in season, try freshly harvested mussels from the English channel.

Explore even more highlights of Normandy for a superb day out including the maritime city of Cherbourg (48km), the coastline between Barneville-Carteret (44km) and Granville (85km) as well as historic Bayeux (62km). Even further afield, Mont Saint-Michel (141km) is a remarkable sight of northern France and one of the country’s most visited destinations.

Local Amenities

Nearest Ferry Port	<b>Cherbourg (48km)</b>
Nearest Train Station	<b>Carentant (20km)</b>
Nearest Airport	<b>Rennes Bretagne Airport/Paris CDG Airport (210km/344km)</b>
Nearest Village	<b>Small village (Short walk)</b>
Nearest Restaurant	<b>In the village - seasonal opening (Within 1km)</b>
Nearest Beach	<b>(3.5km)</b>
Nearest Supermarket	<b>Just outside Sainte-Mère-Église (7.5km)</b>
Nearest Town	<b>Valognes (18km)</b>
Nearest Golf	<b>Golf Utah Beach (7km)</b>

## What we love

- This prestigious Normandy estate dates back to the 17th century – each of the dwellings has its own story to tell
- The elegant interiors showcase the domaine's rich heritage alongside 21st century additions
- A beautiful venue for a romantic French wedding in Normandy with idyllic gardens and such a historic backdrop
- Cycle to the vast beach only 3.5km away or venture a little further to Plage de Quinéville and the Utah Landing Beach
- This region is famed for its moving WWII sites, memorials and fascinating museums
- Enjoy oysters overlooking the harbour in Saint-Vaast-la-Hougue or freshly harvested *moules* in Barfleur
- Other wonderful days out include Granville, Bayeux and Mont Saint-Michel

## What you should know...

- This historic estate consists of four dwellings - Manoir Cotentin (<https://www.oliverstravels.com/france/normandy/manoir-cotentin/>) (8 guests), the attached Hippocampe (<https://www.oliverstravels.com/france/normandy/hippocampe/>) (6 guests), La Marine (<https://www.oliverstravels.com/france/normandy/la-marine/>) (8 guests across two apartments) and Le Cormoran (<https://www.oliverstravels.com/france/normandy/le-cormoran/>) (2 guests). Please check the 'Layout' tab carefully for details on each abode.
- The couple staying at Le Cormoran will need to be able to safely manage the quirky steps across the former *pigeonnier*.
- If you would prefer not to hire the estate exclusively, each dwelling can be rented separately (see the individual web links above).
- As is often traditional in France, the village church bells next to the estate ring at 7.00 a.m. and 10.00 p.m. (and every half hour in between for a shorter period).
- Please note that published rates are only valid for the current year. Any bookings for subsequent years will be on request only and correct rates will be confirmed at the time of booking.
- Please note that your booking will only be confirmed once we have checked availability with the owner or their property manager.
- Please note that there is an additional communal space is available at a supplement if renting the Domaine, the price of which depends on use. Please enquire for a price.

# Terms & Conditions

- **Security deposit:** €6000 charged to client's credit card as a pre-authorisation one month before arrival and refunded two weeks after departure, subject to full inspection.
- **Arrival time:** 4.00 p.m.
- **Departure time:** 11.00 a.m. Later check-out may be possible on a Sunday - please enquire.
- **Linen & towels included?:** Yes.
- **Pets welcome?:** Dogs welcome on request only and with prior agreement with the owner. If accepted, a pet supplement of €20 per pet per stay will apply (payable locally).
- **Other Ts and Cs:** Please note that published rates are only valid for the current year. Any bookings for subsequent years will be on request only and correct rates will be confirmed at the time of booking. Please note that your booking will only be confirmed once we have checked availability with the owner or their property manager. A cot and highchair are available on request. Weddings are on request only and subject to prior arrangement with the owner and additional charges. Stag/hen parties are not allowed. The estate is made up of four separate dwellings - Hippocampe (6 guests), Manoir Cotentin (8 guests), Le Cormoran (2 guests) and La Marine (8 guests across two apartments). Please see the 'Layout' tab for details of each property. Please note that there is an additional communal space is available at a supplement if renting the Domaine, the price of which depends on use. Please enquire for a price.
- **Changeover day:** Any day except Sunday.
- **End of stay cleaning available?:** Yes, standard changeover clean included. Guests are required to leave the accommodation clean, tidy and in the same condition as on their arrival. Any extra cleaning, laundry, maintenance and/or rubbish disposal required will be charged against the security deposit.
- **Smoking Allowed?:** Not allowed.
- **Insurance:** Guests are required to be in possession of a valid insurance policy, which covers them for cancellations, loss of personal belongings, personal liability and any accidental damage caused during their stay.
- **Minimum stay:** 2 nights.
- **Tax:** French Visitors Tax included.
- **Beach towels included?:** No, please bring your own.