

Maison Vinicole

Region: Aquitaine Sleeps: 10

Overview

Stay amongst the vineyards at this beautiful historic home set in landscaped gardens with a private heated swimming pool. Embrace the serenity of southwestern France whilst being a short stroll from a traditional wine village and only a 10-minute drive from medieval Saint-Émilion, a UNESCO World Heritage site.

Whether dining al-fresco beneath the vine-clad pergola, cooling off in the infinity swimming pool, meditating by the vines or sipping merlot overlooking the idyllic landscapes, Maison Vinicole allows you to truly relax with ample space to unwind across its elegantly renovated interiors and picturesque grounds.

You can sense the home's history as you sit back in the lounge with its exposed stone, wood beams and tiled flooring – the perfect spot to escape the sun and listen to music on the Sonos speakers, read from the library or watch a film on Netflix. The open-plan kitchen-diner features high-end appliances (Smeg, Miele etc) and there is a Weber barbecue outside for summer dining by the pool on warm evenings when the outdoor terraces are atmospherically lit up.

Maison Vinicole comfortably sleeps up to 10 guests across five air-conditioned bedrooms. There are two doubles on the ground floor including a master en suite with a romantic clawfoot bathtub. There's another two doubles and a twin upstairs, each one with lovely views.

Back outside, discover the yoga deck overlooking the vines and play garden games (*boules*, cricket, badminton). There's two public tennis courts a very short walk away – the owners can provide racquets and balls. Pass more vineyards and wineries as you walk along country roads to a traditional wine village, around 1.5km away, with a bistro,



pharmacy, butchers and grocery store.

It's wonderful being so close to Saint-Émilion, one of France's most beautiful hilltop towns so loved for its medieval charm, Monolithic church and world-famous vineyards. Explore the warren of cobbled lanes, admire the incredible historic architecture and dine out in gastronomic restaurants.

Visit a variety of wine producers across Saint-Émilion and beyond, soak up the ambience of bustling local markets or you can even head to the grand city of Bordeaux. Venture further west to the surfing beaches, lakes and vineyards of the Médoc peninsula or stay closer to home and canoe along the Dordogne River to truly appreciate this wonderful part of the Gironde in southwestern France.

Facilities

Exclusive • Historical Sites • Private Pool • Canoeing/Kayaking • Wine Tasting • Recommended • Horse Riding • Air-Con • Golf Nearby • Tennis Nearby • Cycling • Ideal for Kids • Villa • Walking/Hiking Paths • Romantic • Walk to Village • Special Offer • Cots (Cribs) • Ideal for Teens • Chef/Cook Available • Heated Pool • Has Discount • Ground Floor Bed & Bath • Saltwater Pool • <1hr to Airport • Pool Safety Feature • Walk to Restaurant • Parking Space • Wi-Fi/Internet • Rural Location • Washing Machine • Coffee Machine • Outstanding Landscapes • Outdoor Pursuit & Activities • Tourist Towns & Villages • Table Tennis • Laptop Friendly Workspace • DVD • Tumble Dryer • Dishwasher • Microwave • Smart TV • Outdoor Games • Heating • Kid-friendly museum • Kid-friendly excursions • Water excursions/Boat trips • Forest park/High-rope course • Board games • Babysitting Available • Badminton • Boules/Petanque • Ideal for Babies & Toddlers • Tennis rackets • High Chair(s) • Fenced Grounds

Interior & Grounds

Maison Interiors

Main Floor (some steps)

- Lounge with TV
- Open-plan kitchen, well-equipped including induction hob, microwave, oven, dishwasher, two fridges and Nespresso machine
- Open-plan dining area
- Library/study area
- Guest WC
- Master bedroom with double bed, French doors opening out to poolside terrace and en suite bathroom with clawfoot bath and walk-in shower
- Bedroom with double bed
- Bathroom

First Floor

- Mezzanine area with study
- Bedroom with double bed
- Bedroom with double bed
- Shower room
- Bedroom with twin beds

Outside Grounds

- Heated infinity-edge salt-water swimming pool (12x4m, depth: 1.1-1.8m) with automatic safety cover. Open approximately Easter to October
- Poolside terrace with sun loungers and al-fresco dining area
- Pergola for al-fresco dining for up to 12 guests
- Weber gas and charcoal barbecues
- Spanish plancha-grill
- Outdoor lighting system
- Lower garden with lounge terrace with vineyard views
- Professionally landscaped gardens (different levels with steps)
- Badminton, cricket, boules
- Tennis racquets and balls



- Outhouse
- Parking (for four cars, just outside front gates)
- Electric fencing around property

Facilities

- Air-conditioning (bedrooms only)
- Indoor Sonos sound system
- Amazon Prime, Netflix and Disney+
- Library and DVD collection
- Telephone (local calls only)

Location & Local Information

In the Gironde region of southwestern France, Maison Vinicole is set amongst the vines only a 10-minute drive from the beautiful hilltop town of Saint-Émilion and its world-famous vineyards.

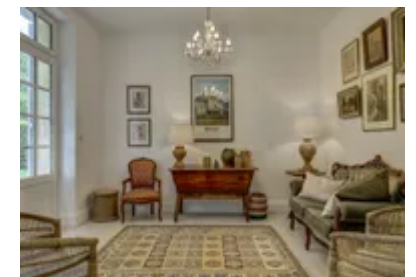
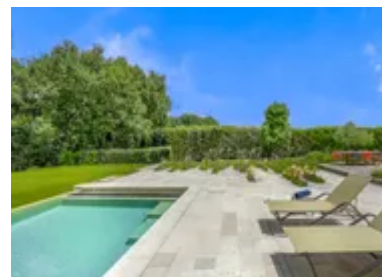
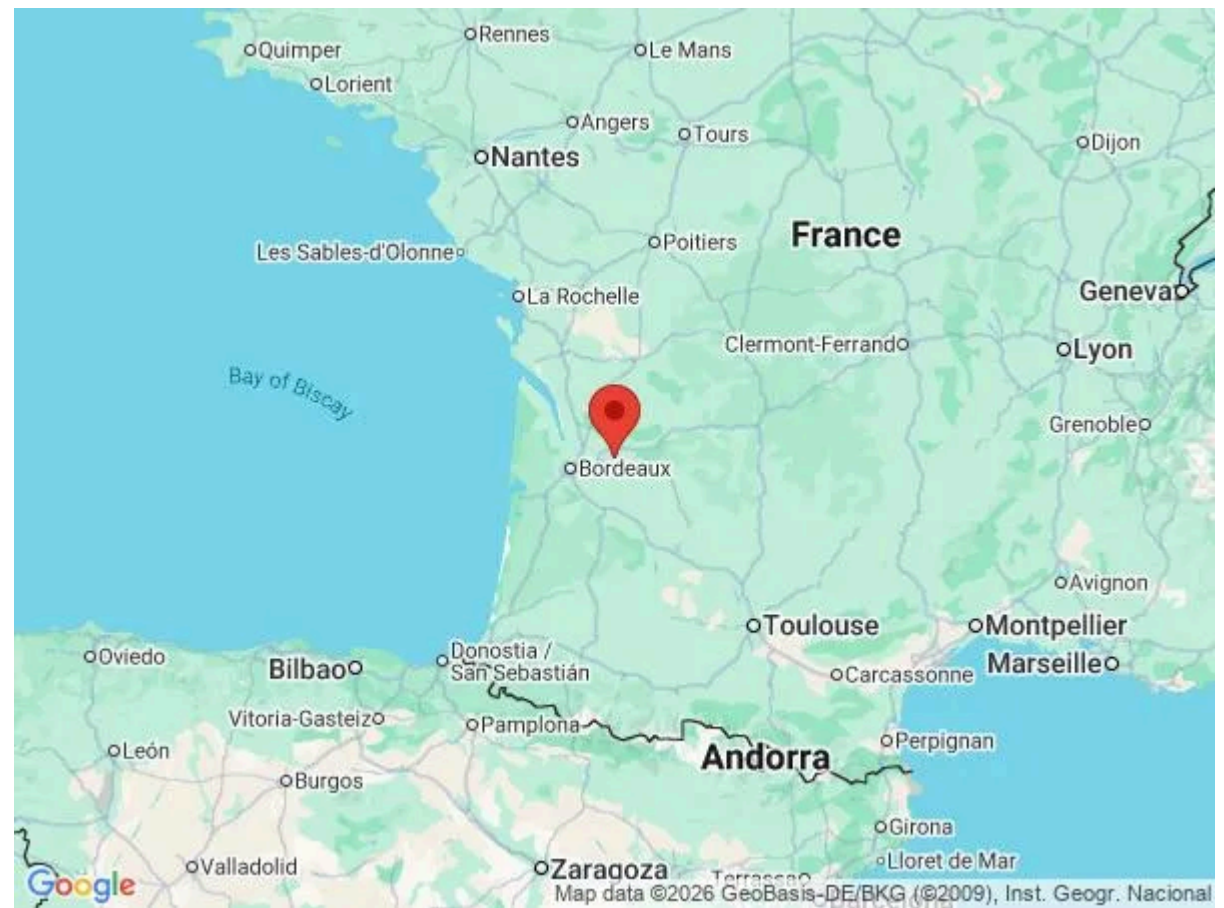
Surrounded by working vineyards and close to a small hamlet, walk along country roads to a traditional wine village, around 1.5km away, with a bistro, butchers, grocery store and pharmacy. Even closer, two public tennis courts are located very close to Maison Vinicole, a short walk away, and the owners will provide the entry code as well as racquets and balls.

There are larger supermarkets in and around Castillon-la-Bataille (10.5km) and the larger town of Libourne (16km) – both places also host wonderful markets (the Sunday morning market in Libourne is highly regarded in the area). Meanwhile, there is a bakery and other amenities in Lussac (5.5km).

Of course, vineyard visits and wine-tastings can be arranged including wineries in the immediate area (the village is known for producing an excellent red wine, mostly Merlot) and across the Saint-Émilion wine region and beyond. This is also a great location for sampling the wines of Pomerol just to the north of Saint-Émilion whilst the city of Bordeaux is less than an hour away by car (or take the train from Gare de Saint-Émilion).

Of course, the close proximity to Saint-Émilion (8km) is one of the greatest highlights of the location. Be captivated by Saint-Émilion's historic charm as you explore its narrow cobbled lanes, dine out in gastronomic restaurants and try Bordeaux's finest appellations in characterful wine bars. Organise a guided tour to learn all about the incredible history of the town and its surroundings - the Monolithic church and catacombs are especially fascinating.

Heading south is the market town of Castillon-la-Bataille (10.5km) by the banks of the Dordogne whilst riverside



Sainte-Foy-la-Grande (32km) is just half an hour away, loved for its atmospheric Saturday morning market. Discover canoeing and kayaking along the Dordogne as well as ample opportunities for cycling, walking, hiking and even hot-air balloon rides across this glorious part of southwestern France.

If arriving by aeroplane, fly into Bordeaux Merignac (60km) or Bergerac Airport (55km), both with international arrivals, or take the TGV from Paris to Libourne or Bordeaux – the fastest services from Paris Montparnasse to Bordeaux take just over 2 hours!

Local Amenities

Nearest Airport	Bergerac Dordogne Périgord Airport (55km)
Nearest Airport 2	Bordeaux Airport (60km)
Nearest Train Station	Saint-Émilion/Libourne (9.5km/14km)
Nearest Village	Small rural village (1.5km)
Nearest Town	Saint-Émilion (8km)
Nearest Restaurant	In local village (1.5km)
Nearest Shop	Épicerie Proxi in local village (1.5km)
Nearest Supermarket	Larger supermarket near Castillon-la-Bataille (11km)
Nearest Golf	Golf du Grand Saint-Emilionnais (9km)
Nearest Tennis	Village tennis courts (Short walk)

What we love

- This beautiful and historic home enjoys such an idyllic setting surrounded by vineyards close to Saint-Émilion
- Take a dip in the infinity heated swimming pool before enjoying leisurely al-fresco lunches beneath the vine-clad pergola
- The features are fantastic from air-conditioning in all the bedrooms to Sonos speakers, Smart TV and full high-speed fibre Wi-Fi
- There are two tennis courts a very short walk away or stay home and play cricket, table tennis, badminton and *boules* across the vast landscaped gardens
- Stroll past vineyards and wineries to a restaurant and grocery store in the local village renowned for its AOC red wine
- It's wonderful to be only 8km from the heart of medieval Saint-Émilion, one of France's most famous hilltop towns

What you should know...

- Air-conditioning is featured in the bedrooms only.

Terms & Conditions

- **Security deposit:** €1900 paid via bank transfer to the owner one month before arrival and refunded two weeks after departure, subject to full inspection.
- **Arrival time:** 4.00 p.m.
- **Departure time:** 10.00 a.m.
- **Energy costs included?:** Yes.
- **Linen & towels included?:** Yes.
- **Pets welcome?:** Not allowed.
- **Other Ts and Cs:** A cot and highchair can be requested. Air-conditioning is featured in the bedrooms only. Weddings, stag/hen parties and any special events are not allowed.
- **Changeover day:** Saturday. All other changeover days on request.
- **End of stay cleaning available?:** Yes, standard changeover clean included. Guests are required to leave the accommodation clean, tidy and in the same condition as on their arrival. Any extra cleaning, laundry, maintenance and/or rubbish disposal required will be charged against the security deposit.
- **Smoking Allowed?:** Not allowed.
- **Minimum stay:** 7 nights. All other durations on request.
- **Heating costs included?:** Yes. Please note the fireplace is not in use.
- **Pool heating charge?:** Included. Please note that like all heated pools, pool heating and water temperature are reliant on weather and outside temperatures.
- **Tax:** French Visitors Tax is included.
- **Pool towels included?:** Yes.
- **Pool opening dates?:** The pool is open approximately Easter to October. Please note that pool opening dates are subject to local weather conditions and pool maintenance requirements and that cooler months may not be suitable for swimming.