

Highbury Mansion

Region: The South West **Sleeps:** 24

Overview

Step into a world of Tudor charm at Highbury Mansion, a grand holiday escape in Bournemouth, Dorset. With space for up to 24 guests, it's an ideal setting for large family gatherings or reunions with friends, offering 12 luxurious ensuite bedrooms to ensure a comfortable stay. Highbury Mansion's grand interiors and rich, opulent decor create an ambiance that's both elegant and welcoming. Gather in the large, inviting social areas, unwind in the expansive gardens, or take a relaxing soak in the hot tub – this property is perfect for relaxation and quality time together.

Located just moments from Bournemouth town centre, Highbury Mansion provides easy access to local amenities, with a prime spot only five minutes from the beach. Spend summer days on the sand, enjoy the pier and arcades, or explore the vibrant town filled with shops, restaurants, and attractions. Evenings here can be as lively or as cozy as you like, with a spacious fireplace, board games, and a large TV creating the perfect setup for quiet nights in. Highbury Mansion is a beautiful blend of nostalgia and comfort – the perfect place to make lasting memories with loved ones.



Facilities

Historical Sites • Ideal for Xmas/NY • Ground Floor Bed & Bath • Wi-Fi/Internet • Hairdryer • Recommended • Stag/Hen Allowed • Coffee Machine • TV • Ideal for Parties • Garage • Quirky (Unique) • Laptop Friendly Workspace • Cots (Cribs) • Manor • Has Discount • Beach Nearby • Special Offer • Heritage Collection • Country Estate • Kid-friendly excursions • Swings • Slide • Ideal for Babies & Toddlers • Ideal for Kids • Ideal for Teens • Hot Tub • Walk to Restaurant • <1hr to Airport • Dishwasher • Microwave • Safety Deposit Box • All Bedrooms En-Suite • Smart TV • Working Fireplace/Woodburner • Fire Pit • Heating • High Chair(s) • Parking Space • Outstanding Landscapes • Outdoor Pursuit & Activities • Tourist Towns & Villages

Interior & Grounds

Highbury Mansion

Ground Floor

- Hallway
- Living room with fireplace and flat screen TV
- Fully equipped kitchen
- Dining room with table seating 24
- Bedroom with double bed (can be made as twin beds) and ensuite bathroom with shower and WC

First Floor

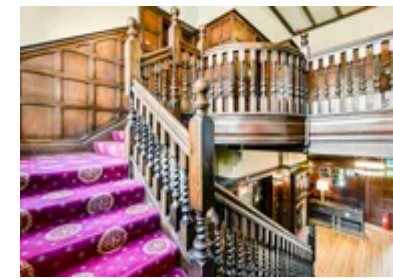
- Bedroom with king-sized bed and ensuite bathroom with shower and WC
- Bedroom with double bed and ensuite bathroom with shower and WC
- Bedroom with king-sized bed, sitting area and ensuite bathroom with shower/bath and WC
- Bedroom with king-sized bed, single bed, sitting area and ensuite bathroom with shower and WC
- Bedroom with twin beds and ensuite bathroom with shower and WC
- Bedroom with double bed and ensuite bathroom with shower and WC
- Bedroom with two bunk beds and ensuite bathroom with shower/bath and WC
- Bedroom with bunk bed and ensuite bathroom with shower and WC
- Bedroom with king-sized bed ensuite bathroom with shower/bath and WC
- Bedroom with king-sized bed (can be made as twin beds) and ensuite bathroom with shower and WC
- Bedroom with double bed and ensuite bathroom with shower and WC

Exterior

- Spacious garden
- Romeo and Juliet balcony
- Seating area with fire pit
- Hot tub
- Swing set
- Parking for 10+ cars

Additional Facilities

- Flat screen TV
- Microwave
- Dishwasher
- Hairdryers
- Toiletries
- Workspace
- Highchair
- Cot
- Safe



Location & Local Information

Highbury Mansion is set within beautiful gardens just minutes from the lively Dorset coastline. With ample space to unwind and a private hot tub to enjoy, the garden is an ideal retreat for guests of all ages. Only a five-minute walk brings you to the beach, where golden sands and breathtaking views make for perfect summer days. Bournemouth Pier offers a classic British seaside experience, with arcade games, ice cream stalls, and a thrilling zip wire that adds a bit of adventure to the day.

Beyond the beach, Bournemouth's town centre is filled with things to do. Explore its vibrant café scene, enjoy a meal at one of the many local restaurants, or browse the boutiques and high-street shops. For those looking to explore further, the surrounding Dorset area has much to offer. A short drive away, the iconic Jurassic Coast, a UNESCO World Heritage Site, invites visitors to explore its dramatic cliffs and fossil-rich beaches. An hour away, discover Durdle Door's famous limestone arch or the scenic Lulworth Cove, ideal for kayaking. For a memorable day trip, head to the Isle of Purbeck, where you can enjoy stunning coastal views and visit charming villages, or explore the seaside town of Swanage. You can also take a trip to Salisbury Cathedral, a stunning example of Gothic architecture. The New Forest National Park is also nearby, with endless trails, roaming ponies, and charming villages like Lyndhurst and Brockenhurst. From coastal adventures to countryside escapes, Highbury Mansion offers guests access to Dorset's finest natural and cultural gems.

Local Amenities

Nearest Airport	Bournemouth Airport (9.5 km)
Nearest Train Station	Bournemouth Train Station (1 km)
Nearest Ferry Port	Poole Ferry Port (12 km)
Nearest City	Bournemouth (0 km)
Nearest Beach	Bournemouth Beach (1 km)
Nearest Restaurant	Abor Restaurant (0.5 km)
Nearest Bar/Pub	Felsons (1 km)
Nearest Shop	Co-Op (0.5 km)



Nearest Supermarket	Asda, Bournemouth (1 km)
Sightseeing	Bournemouth Pier (1.5 km)

What we love

- The location of Highbury Mansion is perfect, offering all the conveniences of the city nearby and the beach just steps away—a truly ideal getaway.
- The decor at Highbury Mansion is truly one-of-a-kind, featuring ornate ceilings, oak paneling, and grand fireplaces throughout, all immaculately designed in an authentic Tudor style.
- The hot tub is a fantastic addition, offering guests the perfect place to unwind and relax after a long day at the beach.
- With 12 bedrooms and 12 bathrooms, Highbury Mansion provides guests with both total privacy and spacious areas for quality time together.

What you should know...

- Please be sure to always supervise children in the garden, on the swings, and while using the hot tub. Please note, only children over the age of 5 should use the hot tub.
- Unfortunately, pets are not allowed at Highbury Mansion.
- There is a small cottage on the premises that the caretaker may occasionally need to access. However, please rest assured that your privacy will be fully respected.

Terms & Conditions

- **Security deposit:** £1000 charged to client's credit card as a pre-authorisation at least 2 weeks prior to arrival and refunded two weeks after departure, subject to full inspection.
- **Arrival time:** 4:00 pm
- **Departure time:** 10:00 am
- **Energy costs included?:** Yes, included in the rental price
- **Linen & towels included?:** Yes, bed linen and bath towels are included in the rental price
- **Pets welcome?:** Pets are not allowed at Highbury Mansion
- **Other Ts and Cs:** Please note that towels for the hot tub are not provided
- **Changeover day:** Monday, Tuesday, Wednesday, Thursday, Friday and Sunday
- **End of stay cleaning available?:** No, and additional fee of £500 will be taken to cover cleaning costs
- **Smoking Allowed?:** No smoking or vaping
- **Other 2:** Guests are welcome to use the BBQ, but need to provide their own coal.
- **Minimum stay:** 2 nights. This may be increased to 7 nights during peak seasons.
- **Heating costs included?:** Yes, included in the rental price
- **Stag & Hen Do Allowed? :** Yes, on request only. Please enquire at time of booking.