

# Glas Apartment

Region: South Wales Sleeps: 5

## Overview

This luxurious second-floor flat in the heart of Mumbles offers a stylish and comfortable retreat for up to five guests. Perfectly situated near the stunning Gower Peninsula, it boasts breathtaking sea views, making it an ideal base for exploring the coast or simply relaxing by the water. With its modern interiors and thoughtful amenities, this property ensures a truly memorable stay.

Inside, Glas Apartment features two beautifully appointed bedrooms, an open-plan living and dining area, and a fully equipped kitchen, providing everything you need for a seamless seaside getaway. Large windows invite natural light while framing the spectacular views, creating a bright and welcoming atmosphere. The flat's design perfectly balances contemporary elegance with cosy touches, ideal for couples, families, or friends.

Step outside, and you're just ten minutes from the heart of charming Mumbles village. Explore its array of boutique shops, cafés, and art galleries, or savor a meal at one of the many excellent bars and restaurants nearby. The flat's convenient location offers easy access to the sandy beaches of the Gower, renowned for their beauty and tranquility. Whether you're seeking adventure or relaxation, Glas Apartment provides the perfect coastal escape.

## Facilities

Surfing • Boat Trips • Cycling • Golf Nearby • Tennis Nearby • Historical Sites • Walking/Hiking Paths • Walk to Village • Romantic • Ideal for Kids • Special Offer • Maid Service Available • Has Discount • Ideal for Teens • Cots (Cribs) • Walk to Beach • Beach Nearby • Beachfront • Townhouse/Apartment • <1hr to Airport • Walk to Restaurant • Waterfront • Wi-Fi/Internet • Seaview • Seafront • On-Street Parking • Washing Machine • Outstanding Landscapes • Coffee Machine • Hairdryer • Outdoor Pursuit & Activities • Tourist Towns & Villages • TV • Laptop Friendly Workspace • Dishwasher • Microwave • Smart TV • Heating • Kid-friendly excursions • Water excursions/Boat trips • Playground nearby • Children's books • Ideal for Babies & Toddlers



# Interior & Grounds

## Glas Apartment

### *Interior*

- Open plan kitchen, dining and living area
- Master bedroom with king-sized bed and ensuite bathroom with walk in shower and WC
- Bedroom with single over double bunk bed
- Bathroom with shower/bath and WC

### *Exterior*

- Parking available

### **Additional Facilities**

- Wifi
- Smart TV
- Induction hob
- Microwave
- Dishwasher
- Washing machine
- Nespresso machine
- Travel cot
- Eco-friendly toiletries



# Location & Local Information

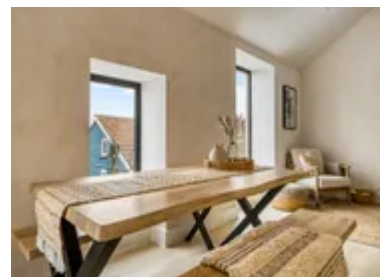
Glas Apartment offers the perfect base for a seaside getaway, just steps from the beach and the heart of Mumbles. With an array of fantastic restaurants and bars nearby, you can savor fresh seafood or relax with evening drinks while enjoying stunning coastal views. The charming town of Mumbles, with its boutique shops, traditional ice cream parlors, and vibrant atmosphere, is just a 10-minute walk away, making it an ideal spot for exploring and unwinding.

Beyond Mumbles, the breathtaking Gower Peninsula awaits. As the UK's first Area of Outstanding Natural Beauty, it boasts dramatic cliffs, golden beaches like Rhossili Bay, and scenic trails that are perfect for hiking and wildlife spotting. Adventure lovers can dive into activities like surfing, paddleboarding, and rock climbing, making every day an opportunity for new experiences.

Further afield, Wales offers a treasure trove of attractions, from historic castles to lush countryside. Nearby, you can take a leisurely coastal stroll along Swansea Bay or immerse yourself in the tranquility of Clyne Gardens. Whether you're seeking relaxation, adventure, or a mix of both, Glas Apartment places you at the heart of it all.

## Local Amenities

Nearest Airport	<b>Cardiff Airport (76 km)</b>
Nearest Ferry Port	<b>Fishguard Harbour (120 km)</b>
Nearest Train Station	<b>Swansea Train Station (8.5 km)</b>
Nearest Village	<b>Mumbles (1 km)</b>
Nearest City	<b>Swansea (8 km)</b>
Nearest Restaurant	<b>Môr, Mumbles (In walking distance)</b>
Nearest Bar/Pub	<b>The George, Mumbles (In walking distance)</b>
Nearest Shop	<b>Co-Op, Mumbles (0.5 km)</b>
Nearest Beach	<b>Mumbles Beach (0 km)</b>
Nearest Golf	<b>Langland Golf Club (3 km)</b>



Nearest Tennis

**Langland Tennis Courts**  
(3 km)

## What we love

- For larger groups, two additional neighboring flats, Goleudy Apartment (<https://www.oliverstravels.com/britain-ireland/wales/south-wales/goleudy-apartment/>) and Môr Apartment (<https://www.oliverstravels.com/britain-ireland/wales/south-wales/mor-apartment/>), are also available to rent. Together with Glas Apartment, they form Shoreline Residences (<https://www.oliverstravels.com/britain-ireland/wales/south-wales/shorline-residences/>), accommodating up to 15 guests.
- Glas Apartment has a truly unbeatable location, just metres from the beach, offering stunning sea views and immediate access to coastal activities.
- For those travelling with babies, a travel cot is available on request.

## What you should know...

- There is free parking directly outside the property with 13 spaces available on a first-come, first-served basis. For additional parking, a paid car park is located opposite the property.
- Please note that beach towels are not provided.
- Glas Apartment is situated on the second floor, so guests will need to climb two flights of stairs to access it.

# Terms & Conditions

- **Security deposit:** £300 charged to client's credit card as a pre-authorisation at least 2 weeks prior to arrival and refunded two weeks after departure, subject to full inspection.
- **Arrival time:** 4:00 pm
- **Departure time:** 10:00 am
- **Energy costs included?:** Yes, included in the rental price
- **Linen & towels included?:** Yes, included in the rental price
- **Pets welcome?:** No pets allowed
- **Other Ts and Cs:** Please do not light any candles or BBQs.
- **Changeover day:** Flexible.
- **End of stay cleaning:** Extra £105, payable to Oliver's Travels with the balance payment. Guests are required to leave the accommodation clean, tidy and in the same condition as on their arrival. Any extra cleaning, laundry, maintenance and/or rubbish disposal required will be charged against the security deposit.
- **Smoking Allowed?:** No smoking or vaping.
- **Minimum stay:** 2 nights. This may increase during peak seasons.
- **Heating costs included?:** Yes, included in the rental price
- **Beach towels included?:** Please note that beach towels are not provided
- **Noise policy :** Please be respectful of the neighbours.