

L'Imprime Vache

Region: French Riviera (Cote D'Azur) **Sleeps:** 10

Overview

Immerse yourself in the glamour of Plage de Pampelonne with this elegantly styled villa set in an exclusive location just a short walk from beachside restaurants, iconic beach clubs and the long sandy shores of one of France's most famous stretches of coastline.

Stroll through the expansive Mediterranean garden to reach the main part of the villa, a gorgeous holiday abode with a light-filled open-plan living and dining area, a cosy TV lounge and three inviting bedrooms with en suite bath/shower rooms. Inside L'Imprime Vache, modern comforts await including air conditioning, Smart TVs in all bedrooms, and a 3D TV with a full surround sound AV system in the main living room.

Another four guests can stay in a simpler yet equally charming 2-bedroom apartment, located on the lower level beneath the pool area, also home to a little kitchenette and shower room.

Gather on the shaded terrace, such a beautiful spot for al-fresco meals and relaxation overlooking the garden. Around the corner, steps lead down to a wonderful swimming pool (that can be heated for a supplement) with its poolside terrace and sun loungers. You can even catch a glimpse of the glistening Mediterranean and distant lighthouse from this idyllic setting.

Indeed, this is a prime location, only a 600m walk from the exclusive Nikki Beach and Plage de Pampelonne, yet you are far away enough not to be disturbed by the lively beach club scene in the summer months. Discover a wealth of seasonal watersports and upmarket restaurants for beachside dining.

What's more, the heart of historic Saint-Tropez is just a short drive away with its twice-weekly Provençal market, vibrant cafes, designer boutiques and famous harbourfront. You may prefer the flower-filled charm of hilltop Ramatuelle and don't miss the vineyards across the region – bring back a bottle of local rosé to enjoy on your picture-perfect terrace at L'Imprime Vache.

Facilities

Golf Nearby • Villa • Boat Trips • Scuba Diving • Go-Karting • Sailing • Cycling • Tennis Nearby • Historical Sites • Watersports • Horse Riding • Walking/Hiking Paths • Wi-Fi/Internet • Air-Con • Walk to Beach • Fishing • Wine Tasting • Wow Factor • Cots (Cribs) • Private Pool • Pool Safety Feature • Heated Pool • Walk to Restaurant • Smart TV • High Chair(s) • Parking Space • Outstanding Landscapes • Outdoor Pursuit & Activities • Tourist Towns & Villages



Interior & Grounds

Main Villa Interiors (single storey with steps)

- Open-plan lounge and dining area with Smart TV and doors opening out to the terrace
- Open-plan kitchen with breakfast bar
- Second smaller lounge with Smart TV and door leading to terrace overlooking swimming pool below
- 2 x bedrooms with Smart TV, main terrace access and en suite bath/shower room
- Bedroom with Smart TV, terrace (above swimming pool) and en suite bath/shower room

Separate Lower Level Apartment (near the entrance gate, simpler in style)

- 2 x bedrooms with Smart TV
- Small kitchen area (open-plan to the bedroom)
- Shower room

Outside Grounds

- Swimming pool (freeform shape approx. 11x5.5m, depth: 1.4-2m) with safety gate access. Can be heated for a supplement
- Poolside terrace with sun loungers
- Terrace with shaded outdoor lounge and dining area
- Barbecue
- Large garden (sloping in places)

Facilities

- Apple TV (all bedrooms and lounges)
- Gym equipment
- Alarm and security system



Location & Local Information

L'Imprime Vache is only 600m from Plage de Pampelonne, one of France's most famous beaches, and just a short drive to the heart of Saint-Tropez.

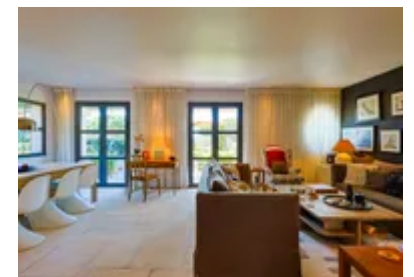
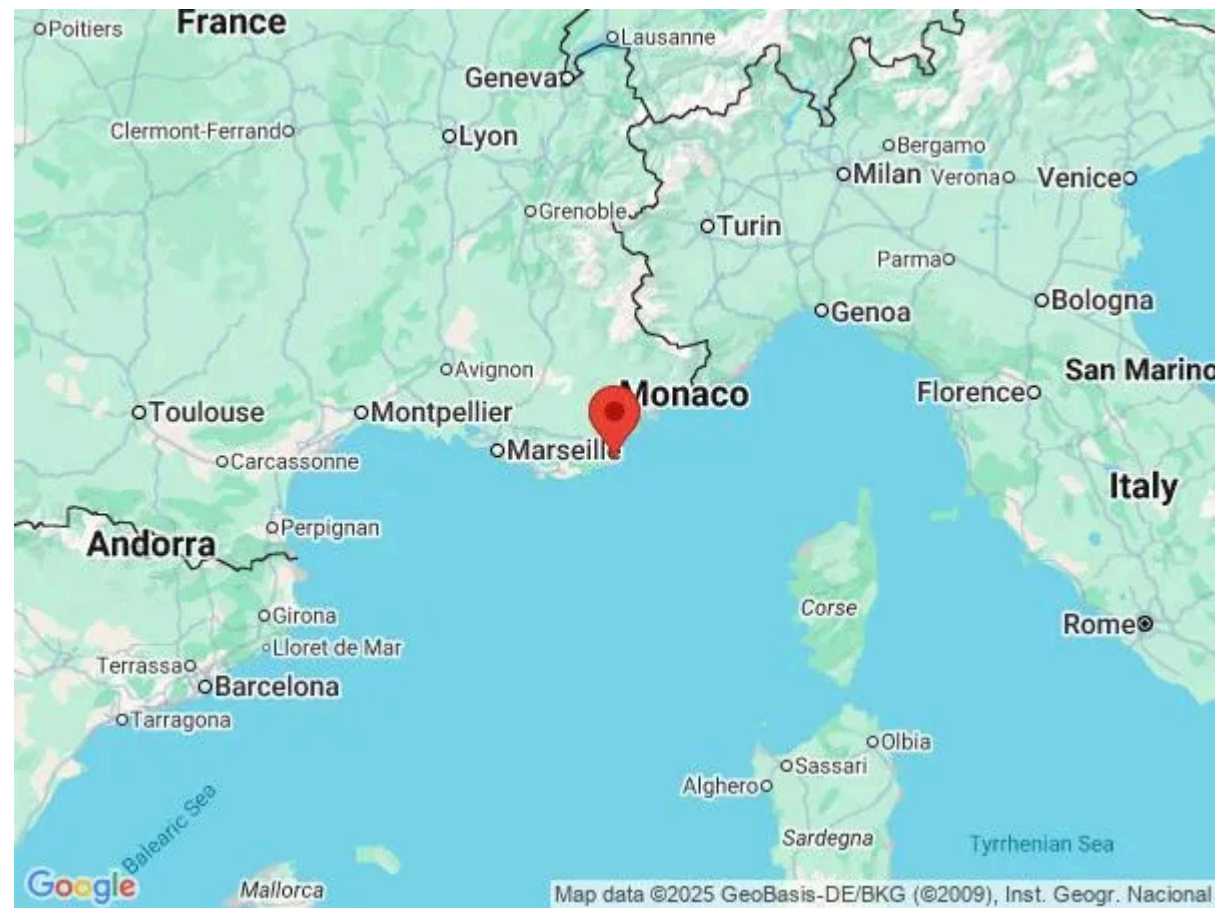
It's a privilege to be able to walk to this fantastic beach – it's such a popular spot, especially in the summer months, with visitors from across the region and beyond usually driving to Pampelonne Beach for a day out on the sandy shores. The villa is set in a partially residential area – you only need to walk out of the gate, pass huge umbrella pines as you walk along the country road (no pavement part of the way) and within a 10-minute stroll you could be dipping your toes in the Mediterranean.

There are three summer beachside restaurants on this part of the 5km-long beach including Nikki Beach Club (600m). Reserve ahead to spend the day their exclusive swimming pool (adults only) or drink and dine in their upmarket restaurant with a relaxed vibe as the DJ plays. As with all the beachside restaurants and clubs, opening dates/times are seasonal so do check ahead.

This is also a great spot for summer watersports – activities on Plage de Pampelonne include jet ski tours, pedal boats, stand-up paddle boarding, kayaking, canoeing, surfing/boogie boarding, scuba-diving and more.

Meanwhile, it's great to be able to reach Saint-Tropez (5.5km) in around 10 minutes by car. Wander through its cobbled streets lined with chic boutiques and artisanal cafes, before soaking up the glamour at its iconic harbourfront. Look out for boat excursions, a great way to tour this part of the French Riviera, or hop on a ferry across the bay to the pretty towns of Port Grimaud and Saint-Maxime.

A short drive in the other direction brings you to Ramatuelle (5km), a hidden gem boasting breathtaking hilltop views, winding alleys, lovely restaurants and a charming market. Around Ramatuelle, Pampelonne and



nearby Gassin, immerse yourself in the region's rich winemaking heritage with a tour of its world-renowned vineyards or simply sip exquisite rosés amid sun-drenched vineyards in this beautiful setting on the Côte d'Azur.

Local Amenities

Nearest Airport	Toulon Hyères Airport (56km)
Nearest Airport 2	Nice Airport (109km)
Nearest Train Station	Saint-Raphaël Valescure (44km)
Nearest Restaurant	Nikki Beach - seasonal opening (600m)
Nearest Beach	Plage de Pampelonne (600m)
Nearest Supermarket	Spar les Tournels (3.5km)
Nearest Village	Ramatuelle (5km)
Nearest Town	Saint-Tropez (5.5km)
Nearest Tennis	Tennis Club Saint-Tropez (5km)
Nearest Golf	Golf Club Saint-Tropez (12km)

What we love

- Catch a glimpse of the sea from the raised swimming pool terrace – after all, the famous Plage de Pampelonne is only 600m away
- The expansive Mediterranean gardens are simply idyllic, as are the pretty terraces for al-fresco dining and relaxation
- The exclusive beach club, Nikki Beach Saint-Tropez, is just a short stroll away
- A perfect base for soaking up the allure of Saint-Tropez and hilltop Ramatuelle

What you should know...

- The main villa sleeps 6 guests across three en suite double bedrooms. For a further four guests, there is also a separate 2-bedroom lower-floor apartment with a shower room and kitchenette, located near the main entrance gate (below the pool level).
- Please note that published rates are only valid for the current year. Any bookings for subsequent years will be on request only and correct rates will be confirmed at the time of booking.
- Please note that your booking will only be confirmed once we have checked availability with the owner or their property manager.

Terms & Conditions

- **Security deposit:** €10,000 charged to client's credit card by Oliver's Travels as a pre-authorisation at least 2 weeks prior to arrival and refunded two weeks after departure, subject to full inspection.
- **Arrival time:** 5.00 p.m.
- **Departure time:** 10.00 a.m.
- **Energy costs included?:** Yes.
- **Linen & towels included?:** Yes.
- **Pets welcome?:** On request only and with prior agreement with the owner.
- **Other Ts and Cs:** Weddings, stag/hen parties and any special events are not allowed. Cot and high chair are available on request. Please note that published rates are only valid for the current year. Any bookings for subsequent years will be on request only and correct rates will be confirmed at the time of booking. Please note that your booking will only be confirmed once we have checked availability with the owner or their property manager.
- **Changeover day:** Saturday - all other changeover days on request.
- **End of stay cleaning available?:** Yes, standard changeover clean included. Guests are required to leave the accommodation clean, tidy and in the same condition as on their arrival. Any extra cleaning, laundry, maintenance and/or rubbish disposal required will be charged against the security deposit.
- **Smoking Allowed?:** Outside only.
- **Minimum stay:** 14 nights in July and August. 7 nights during all other periods.
- **Pool heating charge?:** No, extra €525/week in high season and €980/week in low season payable locally. Please note that like all heated pools, pool heating and water temperature are reliant on weather and outside temperatures.
- **Tax:** French Visitors Tax in the amount of €6.62 per person, per night payable to Oliver's Travels at the time of balance payment.
- **Pool towels included?:** Yes.
- **Pool opening dates?:** Please note that pool opening dates are subject to local weather conditions and pool maintenance requirements and that cooler months may not be suitable for swimming.