

Apartment Frade

Region: Portugal **Sleeps:** 5

Overview

Welcome to Apartment Frade, a beautifully designed two-bedroom serviced apartment in the heart of Lisbon. Thoughtfully decorated to blend contemporary elegance with classic charm, this stylish retreat features a spacious open-plan living area bathed in natural light, with plush seating and a sleek dining space perfect for relaxing or entertaining. The fully equipped modern kitchen includes high-end appliances and ample counter space for culinary enthusiasts. Each bedroom offers serene comfort with premium bedding and plenty of storage, while the bathrooms showcase chic, modern finishes, walk-in showers, and luxurious amenities.

Situated in the vibrant Santos neighbourhood, Apartment Frade offers a prime location for exploring Lisbon. The building retains its traditional Portuguese character with beautifully restored exteriors, complemented by modern conveniences like an elevator and secure access. Step outside and find yourself surrounded by trendy cafes, boutique shops, and cultural landmarks. The nearby riverside promenade and excellent transport links make it easy to enjoy the best of Lisbon's sights and sounds. Apartment Frade is the ideal base for a refined city getaway or a long-term stay in one of Europe's most captivating capitals.

Facilities

Wi-Fi/Internet • Air-Con • TV • Historical Sites • Hairdryer • Coffee Machine • City Homes & Apartments • Washing Machine • Easy By Train • Walk to Restaurant • <1hr to Airport • Dishwasher • Microwave • Safety Deposit Box • Heating • Tourist Towns & Villages



Interior & Grounds

The Apartment

Interior

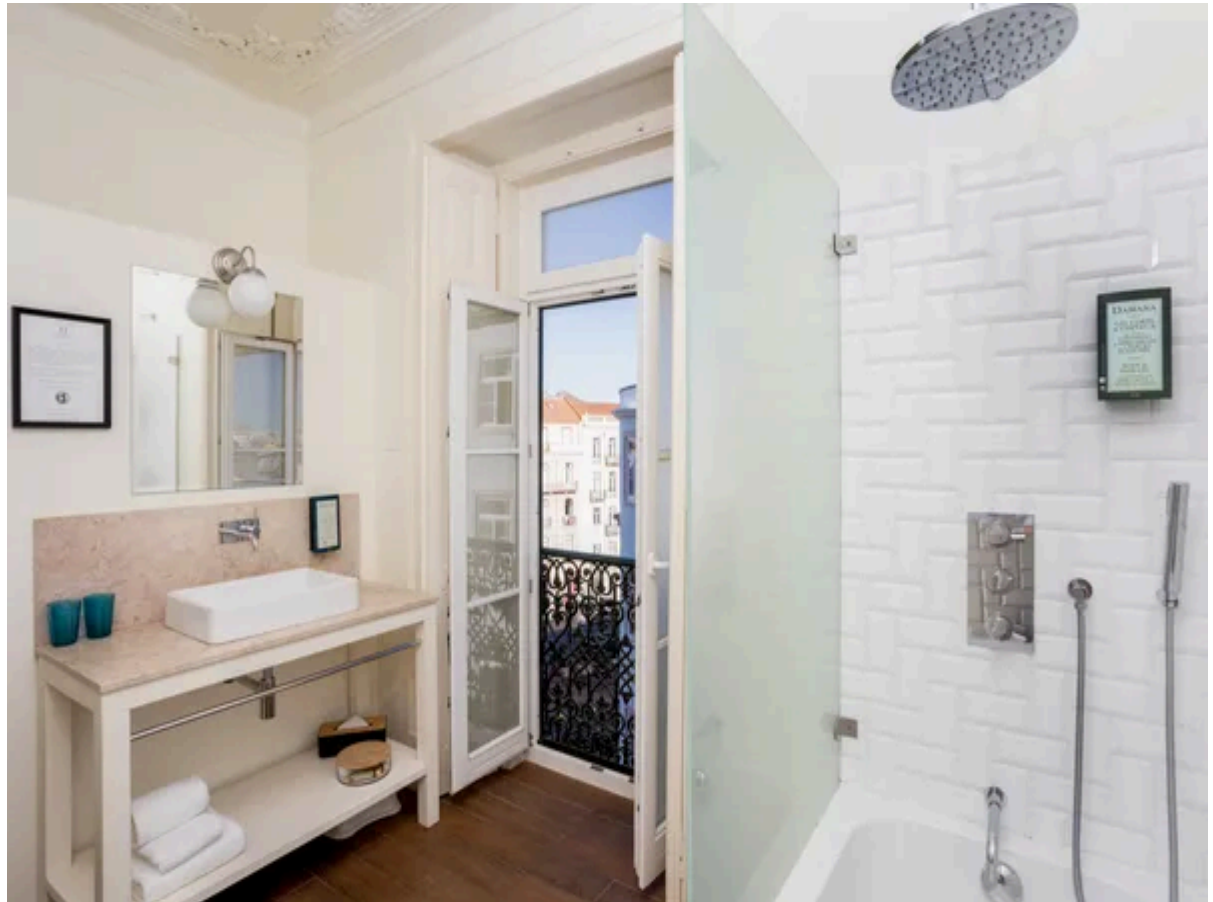
- Bedroom 1: king size bed
- Bedroom 2: two twin beds/king size bed
- Living area with a sofa bed
- Bathroom
- Fully equipped kitchen

Exterior

- Juliette balcony

Additional Facilities

- Wi-Fi
- TV
- Safety deposit box
- Coffee machine



Location & Local Information

Apartment Frade is ideally located in the heart of Lisbon, overlooking the picturesque Largo da Esperança square. This central location offers a perfect balance of tranquillity and access to the city's vibrant attractions. The square itself is home to a magnificent fountain, providing a peaceful atmosphere, while the surrounding streets are filled with charming cafés, shops, and historical landmarks.

Within walking distance, you'll find some of Lisbon's most famous sites, including the iconic Alfama district with its narrow, winding streets, and the impressive São Jorge Castle, which offers panoramic views of the city. The bustling Baixa area is just a short stroll away, where you can explore the city's shopping and dining options, and the nearby historic tram 28 route offers a scenic ride through Lisbon's most famous neighbourhoods.

The area is well-connected by public transport, making it easy to explore further afield. Whether you're here for a cultural getaway, culinary exploration, or simply to soak in the city's unique atmosphere, Apartment Frade's location provides the ideal base for your holiday in Lisbon.

Local Amenities

Nearest Airport	Humberto Delgado Airport (9 km)
Nearest Train Station	Santos (500 m)
Nearest Supermarket	Supermercado Santos (80 m)
Sightseeing	Lisbon Cathedral (2 km)
Sightseeing	Jerónimos Monastery (7 km)
Sightseeing	Belém Tower (8 km)



What we love

- Prime location in Lisbon's vibrant Santos neighbourhood
- Spacious, light-filled interiors with modern amenities
- Walking distance to cafes, shops, and the riverside
- Family-friendly design with room to relax and play
- Easy access to cultural landmarks and public transport

What you should know...

- Located in a historic building, the property may have narrow stairways or hallways
- The surrounding cobblestone streets can be uneven, requiring caution when walking
- Limited parking availability in the busy neighbourhood

Terms & Conditions

- **Security deposit:** Amount charged by client's credit card by the owner before arrival and refunded two weeks after departure, subject to full inspection. - €250 for stays less than 5 days - €500 for stays longer than 5 days
- **Arrival time:** 15:00
- **Departure time:** 11:00
- **Energy costs included?:** Yes, included in the rental price.
- **Linen & towels included?:** Yes, included in the rental price.
- **Pets welcome?:** No pets allowed.
- **Other Ts and Cs:** Extra towel set :10€; Extra bed linen change :20€; Extra cleaning :30€ per day; Breakfast €15 per person per night
- **End of stay cleaning available?:** Yes. However, guests are required to leave the accommodation clean, tidy and in the same condition as on their arrival. Any extra cleaning, laundry, maintenance and/or rubbish disposal required will be charged against the security deposit.
- **Smoking Allowed?:** Smoking & Vaping are not permitted.
- **Insurance:** Guests are required to be in possession of a valid insurance policy, which covers them for cancellations, loss of personal belongings, personal liability and any accidental damage caused during their stay.
- **Minimum stay:** 3 nights.
- **Heating costs included?:** Yes, included in the rental price.
- **Tax:** Lisbon city tax is €4 per person, per night up to a maximum of 7 days. City tax is not included in the rental rate and is payable locally.
- **Internet access?:** Wi-Fi internet access included.
- **Stag & Hen Do Allowed? :** Weddings, stag/hen parties and any special events are not allowed.