

Suite Damasio

Region: Portugal **Sleeps:** 2

Overview

Experience modern luxury at Suite Damasio, a beautifully designed one-bedroom serviced apartment in the vibrant heart of Lisbon. This elegantly furnished suite blends contemporary style with timeless comfort, featuring a spacious open-plan living area adorned with sleek furniture and soft lighting. The fully equipped kitchenette provides everything you need for a comfortable stay, from high-end appliances to a stylish dining nook perfect for intimate meals. The bedroom offers a serene retreat with a plush king-sized bed, premium linens, and ample storage, while the en-suite bathroom boasts a walk-in rainfall shower and luxurious finishes. Thoughtful touches like air conditioning, high-speed Wi-Fi, and a smart TV ensure a seamless and relaxing experience.

Suite Damasio is situated in the charming Santos district and provides convenient access to Lisbon's cultural landmarks and lively neighbourhoods. Step outside and immerse yourself in cobbled streets lined with artisan shops, trendy cafes, and authentic Portuguese restaurants. The apartment's prime location offers a blend of urban excitement and local charm, with easy access to the riverside promenade and public transportation for exploring the city's treasures. Whether you're visiting for leisure or business, Suite Damasio is the ideal base for discovering the magic of Lisbon.

Facilities

Wi-Fi/Internet • Air-Con • Easy By Train • Laptop Friendly Workspace • City Homes & Apartments • Walk to Restaurant • <1hr to Airport • Dishwasher • Microwave • Coffee Machine • Safety Deposit Box • Hairdryer • TV • Heating • Tourist Towns & Villages • Historical Sites



Interior & Grounds

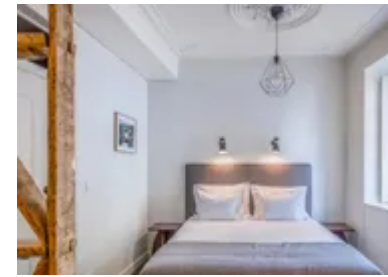
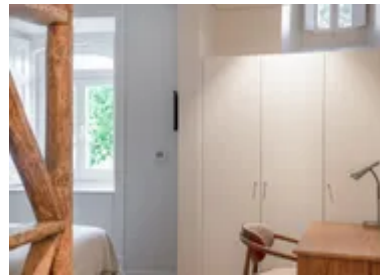
The Apartment

Interior

- Bedroom 1: king size bed
- Living area
- Bathroom
- Fully equipped kitchen
- Dedicated workspace

Additional Facilities

- Wi-Fi
- TV
- Safety deposit box
- Coffee machine



Location & Local Information

Suite Damasio is ideally located in the vibrant Largo da Esperança square, a central and historic area that offers a perfect blend of city life and tranquillity. Positioned in the heart of Lisbon, this charming square is surrounded by beautiful buildings and is home to the iconic fountain, which adds a peaceful atmosphere to the bustling urban environment. The square is a great starting point for exploring the city's many attractions, from the nearby picturesque Alfama district, known for its narrow streets and traditional Fado music, to the lively Baixa area with its shops, restaurants, and cafés.

Lisbon's famous landmarks, such as the Castelo de São Jorge and the stunning Miradouros (viewpoints), are within walking distance, offering spectacular views over the city and the Tagus River. The area is also well-connected by public transport, making it easy to access other parts of the city. Whether you're looking to immerse yourself in Lisbon's rich history, enjoy its modern cultural scene, or simply relax in a peaceful setting, Suite Damasio provides an excellent base for a memorable holiday experience.

Local Amenities

Nearest Airport	Humberto Delgado Airport (9 km)
Nearest Train Station	Santos (500 m)
Nearest Supermarket	Supermercado Santos (80 m)
Sightseeing	Lisbon Cathedral (2 km)
Sightseeing	Jerónimos Monastery (7 km)
Sightseeing	Belém Tower (8 km)



What we love

- Prime location in Lisbon's trendy Santos district
- Spacious, stylish interiors with modern amenities
- Family-friendly with nearby parks and safe streets
- Close to cultural landmarks and riverside walks
- Surrounded by cafes, shops, and galleries

What you should know...

- The property is located in a vibrant area with potential for street noise
- Limited on-site parking; public transportation or nearby garages are recommended
- Cobblestone streets may pose challenges for strollers or those with mobility issues

Terms & Conditions

- **Security deposit:** Amount charged by client's credit card by the owner before arrival and refunded two weeks after departure, subject to full inspection. - €250 for stays less than 5 days - €500 for stays longer than 5 days
- **Arrival time:** 15:00
- **Departure time:** 11:00
- **Energy costs included?:** Yes, included in the rental price.
- **Linen & towels included?:** Yes, included in the rental price.
- **Pets welcome?:** No pets allowed.
- **Other Ts and Cs:** Extra towel set :10€; Extra bed linen change :20€; Extra cleaning :30€ per day; Breakfast €15 per person per night
- **End of stay cleaning available?:** Yes. However, guests are required to leave the accommodation clean, tidy and in the same condition as on their arrival. Any extra cleaning, laundry, maintenance and/or rubbish disposal required will be charged against the security deposit.
- **Smoking Allowed?:** Smoking & Vaping are not permitted.
- **Insurance:** Guests are required to be in possession of a valid insurance policy, which covers them for cancellations, loss of personal belongings, personal liability and any accidental damage caused during their stay.
- **Minimum stay:** 3 nights.
- **Heating costs included?:** Yes, included in the rental price.
- **Tax:** Lisbon city tax is €4 per person, per night up to a maximum of 7 days. City tax is not included in the rental rate and is payable locally.
- **Internet access?:** Wi-Fi internet access included.
- **Stag & Hen Do Allowed? :** Weddings, stag/hen parties and any special events are not allowed.