

Apartment Funil

Region: Portugal Sleeps: 2

Overview

Apartment Funil is a charming one-bedroom apartment located on the first floor of our stunning property. From the moment you step inside, you're welcomed by a warm, inviting atmosphere with views that stretch across the Tagus River, offering a peaceful setting perfect for both short and long stays.

As you enter the apartment, you'll immediately notice the simple yet stylish design. The interior blends Nordic and Portuguese influences, with clean lines and a soothing colour palette. The living area feels open and airy, with soft furnishings that complement the natural light pouring through the windows. A comfortable sofa bed sits invitingly in the lounge, while the main bedroom features a spacious double bed, ensuring a restful night's sleep. You'll also spot personal touches throughout – paintings and photographs that give the space a homely, relaxed feel.

The kitchen area is fully equipped with everything you might need during your stay, whether you plan to cook up a full meal or just enjoy a quick breakfast. It includes a refrigerator/freezer, electric stove, grill microwave, coffee machine, and a dishwasher for convenience.

One of the highlights of Apartment Funil is the large private terrace. This quiet outdoor space is the perfect place to unwind, whether you're sipping coffee in the morning sun or enjoying a glass of wine as the day fades. The terrace is decorated with a few carefully selected plants, creating a peaceful retreat where you can truly relax and enjoy the view.

The bathroom, which has been thoughtfully designed, features a shower, heated towel rail, and organic toiletries to enhance your stay. Additional conveniences include



wireless broadband, a TV with cable channels, and the option for printing and scanning should you need it during your visit.

With air conditioning and heating throughout, the apartment provides year-round comfort. And with all the thoughtful extras, like a clothes drying rack, iron, and safe, you'll find everything you need for a worry-free and enjoyable stay.

Facilities

Wi-Fi/Internet • Air-Con • TV • Historical Sites • Hairdryer • Coffee Machine • City Homes & Apartments • Easy By Train • Walk to Restaurant • <1hr to Airport • Dishwasher • Microwave • Safety Deposit Box • Heating • Tourist Towns & Villages

Interior & Grounds

The Apartment

Interior

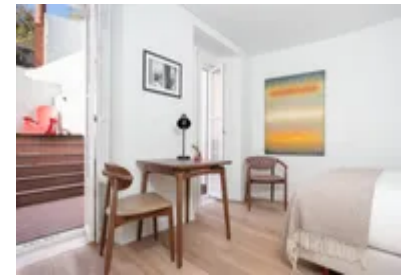
- Bedroom 1: double bed
- Living area with sofa bed
- Bathroom
- Fully equipped kitchen
- Dining area

Exterior

- Balcony
- Private terrace

Additional Facilities

- Wi-Fi
- TV
- Safety deposit box
- Coffee machine



Location & Local Information

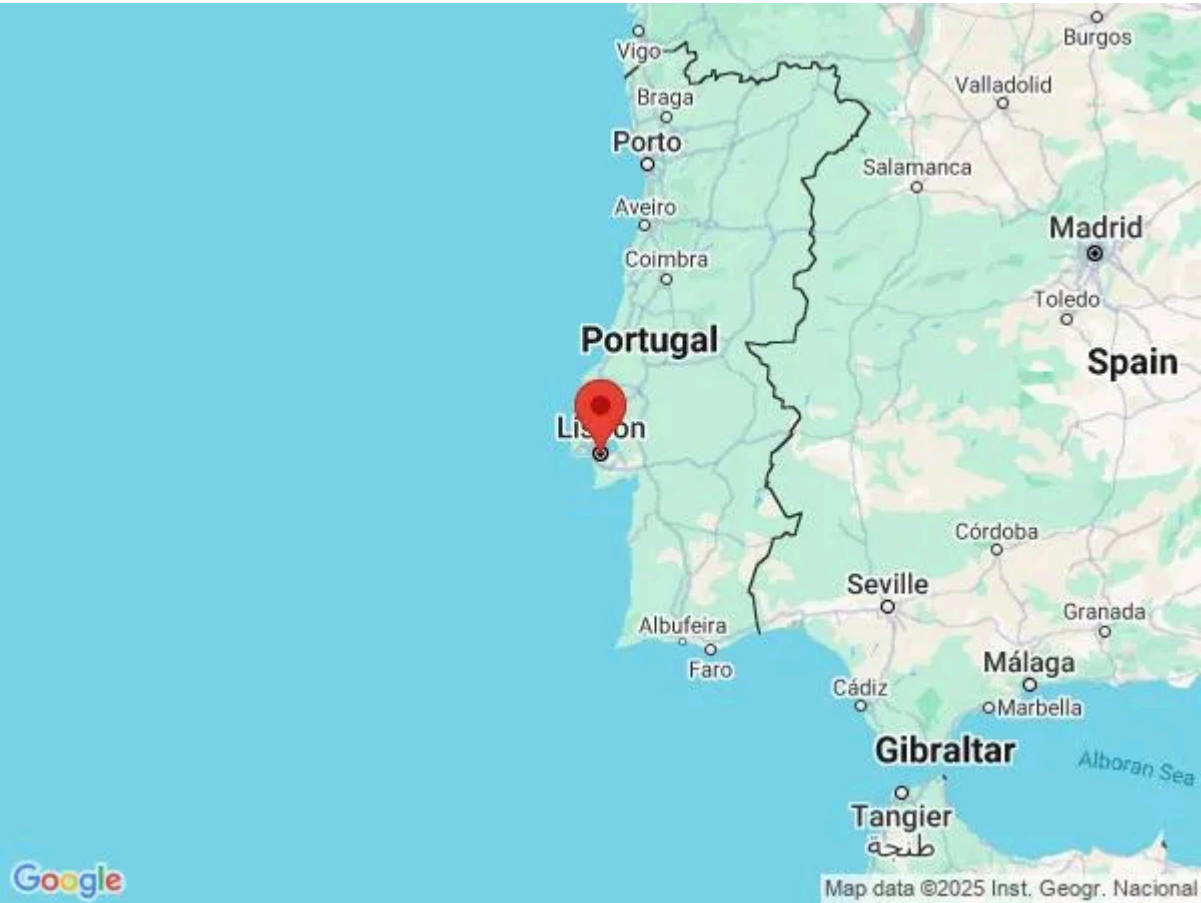
Apartment Funil is ideally located in the heart of Lisbon, offering a perfect base for both relaxation and exploration. Situated on the first floor of a peaceful building, the apartment provides stunning views of the Tagus River, just a short stroll from the historic district of Alfama. This charming neighbourhood is known for its narrow, winding streets, colourful buildings, and traditional Portuguese culture, creating an authentic atmosphere for visitors.

The apartment is well-connected to key attractions in Lisbon, with landmarks such as São Jorge Castle, the Lisbon Cathedral, and the vibrant Baixa district all within walking distance. For those looking to explore further, public transport links, including buses and the famous tram 28, are easily accessible nearby.

Lisbon's iconic riverside promenade is also just moments away, offering scenic walks along the water, perfect for enjoying the city's mild climate. The area boasts a variety of restaurants, cafés, and shops, allowing guests to immerse themselves in the local lifestyle. Whether you're looking to relax by the river or discover Lisbon's rich history, Apartment Funil's location provides the ideal starting point for your holiday.

Local Amenities

Nearest Airport	Humberto Delgado Airport (9 km)
Nearest Train Station	Santos (500 m)
Nearest Supermarket	Supermercado Santos (80 m)
Sightseeing	Lisbon Cathedral (2 km)
Sightseeing	Jerónimos Monastery (7 km)
Sightseeing	Belém Tower (8 km)



What we love

- Enjoy a spacious private terrace with stunning views of the Tagus River – perfect for unwinding after a day of exploring
- Just minutes from Lisbon's historic Alfama district, with easy access to iconic sights and local cafés
- Comfortable, stylish interiors with a fully equipped kitchen, offering a relaxing, home-like atmosphere during your stay

What you should know...

- The apartment is on the first floor, so be mindful of stairs if you have mobility concerns
- The private terrace, while peaceful, has a raised edge, so caution is advised, especially with children

Terms & Conditions

- **Security deposit:** Amount charged by client's credit card by the owner before arrival and refunded two weeks after departure, subject to full inspection. - €250 for stays less than 5 days - €500 for stays longer than 5 days
- **Arrival time:** 15:00
- **Departure time:** 11:00
- **Energy costs included?:** Yes, included in the rental price.
- **Linen & towels included?:** Yes, included in the rental price.
- **Pets welcome?:** No pets allowed.
- **Other Ts and Cs:** Extra towel set :10€; Extra bed linen change :20€; Extra cleaning :30€ per day; Breakfast €15 per person per night
- **End of stay cleaning available?:** Yes. However, guests are required to leave the accommodation clean, tidy and in the same condition as on their arrival. Any extra cleaning, laundry, maintenance and/or rubbish disposal required will be charged against the security deposit.
- **Smoking Allowed?:** Smoking & Vaping are not permitted.
- **Insurance:** Guests are required to be in possession of a valid insurance policy, which covers them for cancellations, loss of personal belongings, personal liability and any accidental damage caused during their stay.
- **Minimum stay:** 3 nights.
- **Heating costs included?:** Yes, included in the rental price.
- **Tax:** Lisbon city tax is €4 per person, per night up to a maximum of 7 days. City tax is not included in the rental rate and is payable locally.
- **Internet access?:** Wi-Fi internet access included.
- **Stag & Hen Do Allowed? :** Weddings, stag/hen parties and any special events are not allowed.