

Maison Jolibois

Region: Provence-Alpes **Sleeps:** 10

Overview

Walk through the gates of Maison Jolibois and it's like a stepping into the countryside while being in the heart of the village. Pass olive trees and a vine-covered pergola before strolling through the handsome doorway into your characterful 5-bedroom village house in Fontvieille.

Soak up the authenticity of this French maison with its blue shutters, exposed stone walls, art work and intricate tiled flooring in many rooms - Maison Jolibois will delight Francophiles seeking timeless Provençal charm. Watch movies using the projector and screen in the living room/library, cook meals in the delightfully old-fashioned kitchen and chill out on the sofas in the upstairs lounge.

Up to 10 guests can sleep here across the slightly unusual layout. The first bedroom with its shower room is accessed independently via the entrance garden and there are another four bedrooms upstairs the main part of the house, three of which are doubles with cooling units for warmer weather, and a cooler east-facing twin bedroom, alongside three more bath/shower rooms (two en suite).

Old stone steps lead to the upper garden with tall cypresses, an ancient hackberry tree for shady relaxation alongside the swimming pool and rustic summer kitchen with everything you need for outdoor feasts by the stone barbecue. Although you are in a bustling village, there's a bucolic ambience across the characterful gardens.

It's only a short walk to the heart of Fontvieille with its café terraces, restaurants, shops, bullring and old-fashioned cinema. On the edge of the village up on a hill is the iconic Moulin de Daudet – follow the lovely walking trail through the pine forest to appreciate the beautiful landscapes that inspired the 19th century French author, Alphonse Daudet.

Artistic Arles is 10km by car with its markets, restaurants, art galleries, photography festival and Roman sites, also the gateway to the Camargue. Furthermore, this is a great location for visiting the landscapes of Les Alpilles with picture-perfect villages amongst the olive groves including Les Baux-de-Provence and Maussane-les-Alpilles both 15 minutes away.

A little further afield, canoe, kayak or paddle overlooking the Roman aqueduct, Le Pont du Gard, visit the beautifully preserved Roman sites of Nîmes or head to yet more UNESCO World Heritage sites in Avignon in this enchanting region of southern France.



Facilities

On-Street Parking • Horse Riding • Canoeing/Kayaking • Walking/Hiking
Paths • Historical Sites • Tennis Nearby • Cycling • Hairdryer • Villa •
Wine Tasting • Golf Nearby • Wi-Fi/Internet • Washing Machine • Private
Pool • Quirky (Unique) • Walk to Village • Kid-friendly museum • Kid-
friendly excursions • Water excursions/Boat trips • Forest park/High-rope
course • Pool Safety Feature • Walk to Restaurant • <1hr to Airport •
Dishwasher • Microwave • Home Cinema • Working Fireplace/Woodburner
• Parking Space • Outstanding Landscapes • Outdoor Pursuit & Activities
• Tourist Towns & Villages

Interior & Grounds

Maison Interiors (L shaped, 240m2)

Main Floor

- Lounge with home-cinema (pull-down screen and video-projector), library and old fireplace
- Dining room
- Kitchen, well-equipped including fridge, freezer, electric oven, gas oven, Lacanche hob, microwave-grill and dishwasher
- Pantry/laundry room with washing machine

Garden Room (independent access)

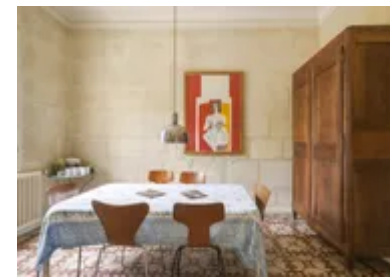
- Independent bedroom with double bed (160x200cm) and shower room (no WC). You can also access the first-floor of main house.

Upper Floor/Upper Garden Level

- Lounge with fireplace
- Master bedroom with king-size double bed (180x200cm), cooling unit, bathroom and separate WC
- Bedroom with double bed (140x200cm), cooling unit, bathroom and WC
- Bedroom with double bed (140x190cm), cooling unit
- Shower room and WC (bedroom above has direct access)
- Bedroom with two single beds (90x200cm each)
- WC (mid-staircase)

Outside Grounds

- Swimming pool (8x4.5m, depth: 0.8-2.1m) with safety alarm and cover
- Pool house/summer kitchen with sink, hob, electric oven, dishwasher, fridge (and freezer part), stone barbecue and dining area for 8-10 guests
- Shower and WC (in pool house)
- Sun loungers (x6)
- Upper garden lawn with cypresses and ancient



hackberry tree

- Fountain and old stone stairs
- Entrance garden area with pergola for outdoor dining
- Olive trees and peach tree
- Parking space (north side, independent entrance and gate)
- Second parking space (south side)

Facilities

- Cooling units (in three bedrooms)

Location & Local Information

Located in an authentic Provençal village on the edge of Les Alpilles Natural Regional Park, Maison Jolibois is an enchanting place to stay just a short walk from the centre of Fontvieille and only 10km by car from Arles.

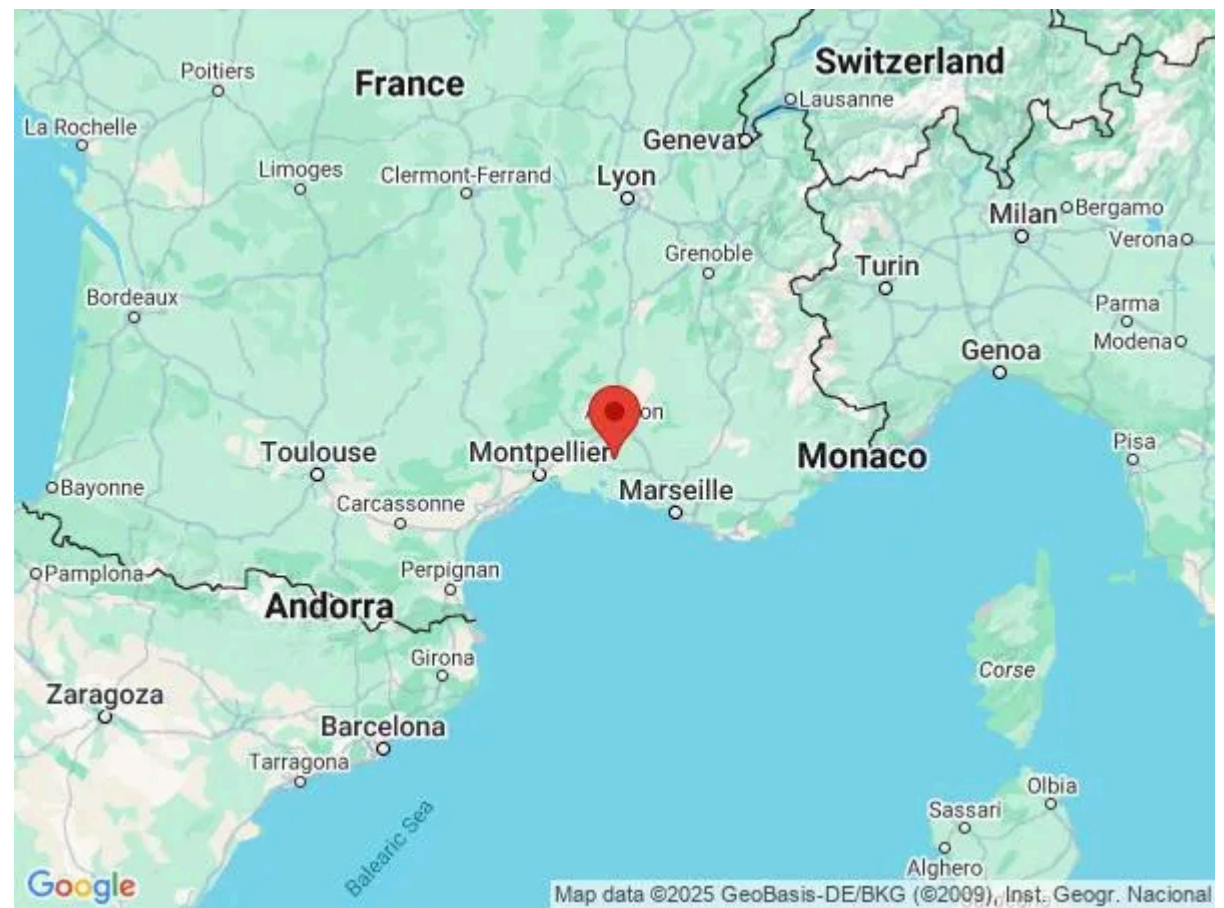
There is a bakery a brief stroll away or continue to the heart of the large village with its characterful lanes, restaurants and square with café terraces. Fontvieille is a traditional village where you will shop amongst locals and visitors alike. There is a bullring beneath the plane trees showcasing bulls from the Camargue and an old-fashioned cinema. Meanwhile, the Vélorail des Alpilles (450m) is a fun activity for all ages, departing from the village (check opening times/dates in advance).

Fontvieille is also loved for its associations with the writer Alphonse Daudet who lived on the edge of village at Le Château de Montauban (800m). There is a lovely walking trail through the pine forests passing Moulin De Daudet (1.1km) and other mills across the landscapes.

This is a great base for visiting Les Alpilles Natural Regional Park, a glorious region of Provence. Hilltop Les Baux-de-Provence (9.5km) is classified as one of France's *'Plus Beaux Villages'* whilst Maussane-les-Alpilles (9km) and Paradou (7km) are lovely spots for lunch. The Wednesday morning market in Saint-Rémy-de-Provence (18km) is another highlight, as is the picture-perfect village of Eygalières (30km) in just over half an hour by car.

Admire art and history in nearby Arles (10km) with its Van Gogh trail and Roman arena, then venture further into the wild landscapes of the Camargue, an area famed for its white horses, bulls and pink flamingos, ideal for nature enthusiasts and outdoor adventurers.

You are also well located for visiting Le Pont du Gard (33km), a UNESCO World Heritage site, as well as the small cities of Avignon (32km) and Nîmes (40km) for yet more ancient history of this incredible part of southern France.



Local Amenities

Nearest Airport	Nimes Airport (34km)
Nearest Airport 2	Avignon Provence Airport (36km)
Nearest Airport 3	Marseille Airport (63km)
Nearest Train Station	Arles/Avignon TGV (9km/28km)
Nearest Village	Fontvieille centre (Within 400m)
Nearest Shop	Bakery (Around 200m)
Nearest Restaurant	Fontvieille (Within 400m)
Nearest Supermarket	Intermarché CONTACT Fontvieille (450m)
Nearest Tennis	Tennis Club de Fontvieille (1km)
Nearest Town	Arles (10km)
Nearest Golf	Golf des Baux de Provence (9km)

What we love

- Such a charming French house with stone walls, blue-shutters and a wealth of character both inside and out
- The gardens are gorgeous and so authentic – pass olive trees, a peach tree and vine-covered pergola as soon as you walk through the gate
- Discover the swimming pool and summer kitchen in the upper garden by the cypresses and ancient hackberry tree
- It's wonderful to be able to stroll to the heart of Fontvieille, a bustling and traditional Provençal village with restaurants and shops
- This is a great base for exploring Arles, Nimes and Avignon as well as the landscapes of Les Alpilles and Camargue

What you should know...

- One of the bedrooms is accessed independently via the garden (you can also reach the first-floor from this room). Please see the 'Layout' tab for full details of where the bedrooms/bathrooms are across the house.
- The house is not air-conditioned however three of the upstairs bedrooms feature cooling units.
- This is a charming village house with characterful features – children will need to be supervised across the old steps and different levels.

Terms & Conditions

- **Security deposit:** €2000 charged to client's credit card as a pre-authorisation at least 2 weeks prior to arrival and refunded two weeks after departure, subject to full inspection.
- **Arrival time:** 5.00 p.m.
- **Departure time:** 10.00 a.m.
- **Energy costs included?:** Yes.
- **Linen & towels included?:** Yes.
- **Pets welcome?:** Not allowed.
- **Other Ts and Cs:** Weddings, stag/hen parties and any special events are on request only and subject to prior arrangement with the owner and additional charges.
- **Changeover day:** Saturday. All other changeover days on request.
- **End of stay cleaning available?:** No, additional €100 payable at the time of booking. Mid-stay clean of 2 x 2hrs of cleaning is included. Guests are required to leave the accommodation clean, tidy and in the same condition as on their arrival. Any extra cleaning, laundry, maintenance and/or rubbish disposal required will be charged against the security deposit.
- **Smoking Allowed?:** Not allowed.
- **Insurance:** Guests are required to be in possession of a valid insurance policy, which covers them for cancellations, loss of personal belongings, personal liability and any accidental damage caused during their stay.
- **Minimum stay:** 7 nights. All other durations on request.
- **Tax:** Included.
- **Pool towels included?:** Yes.
- **Pool opening dates?:** Please note that pool opening dates are subject to local weather conditions and pool maintenance requirements and that cooler months may not be suitable for swimming.