

Bouquet Apartment

Region: Paris Sleeps: 4

Overview

Nestled in the heart of Île Saint-Louis, Bouquet Apartment offers an exquisite retreat that blends modern comfort with timeless Parisian elegance. This two-bedroom apartment is thoughtfully designed to maximize space and natural light, with large windows framing picturesque views of cobblestone streets. The open-plan living area features plush seating, a charming dining nook, and tastefully curated décor that combines contemporary style with classic details like exposed beams and parquet flooring. A fully equipped kitchen makes it easy to prepare meals, while the tranquil bedroom invites restful nights with its luxurious linens and soothing colour palette.

Step outside, and you'll find yourself on one of Paris's most iconic islands, known for its historic architecture and charming boutiques. Stroll along the Seine, savour artisanal ice cream from Berthillon, or explore the island's cosy cafés and gourmet shops. With its central location, Bouquet Apartment is just a short walk to Notre Dame Cathedral and the vibrant Marais district, whilst being equally as close to St. Germain and the Latin Quarter - making it an ideal base for exploring the city. Whether you're visiting for a romantic getaway or a cultural adventure, this apartment offers a seamless blend of comfort, style, and an authentic Parisian experience.

Facilities

City Homes & Apartments • Wow Factor • Walk to Restaurant • Wi-Fi/Internet • Easy By Train • Washing Machine • Coffee Machine • TV • Lift • Laptop Friendly Workspace



Interior & Grounds

The Apartment

Interior

- Spacious open-plan dining room connected to the living room/salon
- Equipped kitchen
- The den
- Master bedroom: king size bed
- Bedroom 2: two twin beds
- Bathroom: shower & bath

Exterior

- Juliet balcony

Additional Facilities

- Wi-Fi
- TV
- Coffee machine
- Washer
- Toaster

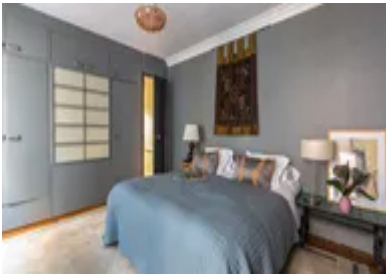


Location & Local Information

This charming Parisian apartment offers an unbeatable location on the iconic Île Saint-Louis. Just steps from the stunning Notre Dame Cathedral, you'll find yourself immersed in the heart of Paris, where cobblestone streets lead to historic landmarks, boutique shops, and gourmet cafés. Stroll along the Seine, indulge in famous Berthillon ice cream, or visit the nearby Latin Quarter for lively dining and cultural experiences. With easy access to the Marais and other top attractions, this apartment provides the perfect base for exploring the best of Paris, all within walking distance.

Local Amenities

Nearest Airport	Paris Charles de Gaulle Airport (35 km)
Nearest Train Station	Pont Marie (450 m)
Nearest Supermarket	Carrefour Express (200 m)
Sightseeing	Cathédrale Notre-Dame de Paris (850 m)
Sightseeing	Sainte-Chapelle (1 km)
Sightseeing	Panthéon (2 km)



What we love

- A prime location on Île Saint-Louis
- Bright, spacious interiors blending classic charm and modern comfort
- Steps from Notre Dame and family-friendly Parisian attractions
- Fully equipped kitchen for convenient meal prep
- Close to Berthillon and charming local boutiques

What you should know...

- The apartment is located on Île Saint-Louis, where cobblestone streets may be uneven and tricky for strollers or small children
- Proximity to the Seine requires extra supervision for younger children during outdoor walks

Terms & Conditions

- **Security deposit:** Oliver's Travels to charge €750 to client's credit card before arrival and refunded two weeks after departure, subject to full site inspection.
- **Arrival time:** 16:00 (early check-in possible upon request)
- **Departure time:** 10:00
- **Energy costs included?:** Yes, included in the rental price.
- **Linen & towels included?:** Yes, included in the rental price.
- **Pets welcome?:** No pets allowed.
- **End of stay cleaning available?:** Extra €300 to be charged to Oliver's Travels with final balance. However, guests are required to leave the accommodation clean, tidy and in the same condition as on their arrival. Any extra cleaning, laundry, maintenance and/or garbage disposal required will be charged against the security deposit.
- **Smoking Allowed?:** Smoking & Vaping are not permitted.
- **Minimum stay:** Varies from 5 - 7 nights depending on season.
- **Heating costs included?:** Yes, included in the rental price.
- **Tax:** Tourist Taxes not included in the rental price, extra cost to be paid locally; please enquire if exact amount is required.
- **Internet access?:** Wi-Fi internet access included.
- **Stag & Hen Do Allowed? :** Weddings, stag/hen parties and any special events are not allowed.