

# Dhodampe Villa

Region: Sri Lanka Sleeps: 14

---

## Overview

Perched atop a serene hill, Dhodampe Villa offers sweeping views over lush jungle and tranquil paddy fields. This beautifully decorated villa combines comfort and style with handmade furniture and carefully chosen fabrics, enhancing its welcoming atmosphere. Sleeping 12 adults and 2 children across 7 spacious bedrooms, the villa features 4 bedroom suites in the main house and 3 more suites located on a lower terrace. Each suite is ensuite, except for the bunk room, which has its own adjoining bathroom. The master and queen suites offer private balconies with panoramic views of the expansive pool and surrounding countryside.

Designed for ultimate relaxation and entertainment, the villa boasts a vast infinity pool, a sun-soaked pavilion, a fully equipped kitchen with a talented chef, and a dedicated massage spa. For active guests, there's a gym and a hard-surface games court offering football, basketball, and more. With an experienced team to cater to your every need, Dhodampe Villa is a truly unforgettable retreat.

## Facilities

Maid Service Available • Table Tennis • Spa/Massage • Laptop Friendly Workspace • Indoor Games • Cots (Cribs) • Villa • Gym/Fitness Room • Beach Nearby • Air-Con • Wi-Fi/Internet • Chef/Cook Included • Spa Treatments Available • Transfers Available • Catering Available • Babysitting Available • On-Site Concierge • Private Pool • Bathroom Toiletries • Laundry Service • Ideal for Babies & Toddlers • Ideal for Kids • Ideal for Teens • Washing Machine • Tumble Dryer • Safety Deposit Box • Hairdryer • All Bedrooms En-Suite • Ground Floor Bed & Bath • TV • Ceiling Fans • Parking Space • Outstanding Landscapes



# Interior & Grounds

## Ground Floor

- Large living room with comfortable seating, TV and access to the garden
- Dining room for 14 people with access to the garden
- Well equipped kitchen
- Bedroom with queen size bed and en-suite bathroom

## First Floor

- Bedroom with king size bed, access to a balcony and en-suite bathroom
- Bedroom with queen size bed, access to a balcony and en-suite bathroom
- Bedroom with king size bed and en-suite bathroom

## Annexe

- Well equipped fitness room with access to the garden
- Bedroom with king size bed, access to the garden and en-suite bathroom
- Bedroom with king size bed, access to the garden and en-suite bathroom
- Bedroom with bunk bed, access to the garden and en-suite bathroom

## Exterior Grounds

- Private swimming pool
- Ample terrace and garden area
- Various sun loungers
- Covered terrace
- Outdoor dining
- Garden furniture

## Additional Facilities

- Wi-Fi connection
- Air conditioning (only in bedrooms)
- Parking space
- Bathroom amenities
- Ceiling fans
- Cot
- Washing machine
- Safe box
- Barbecue
- Table tennis



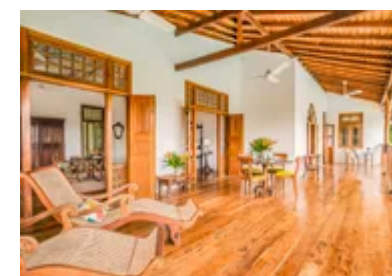
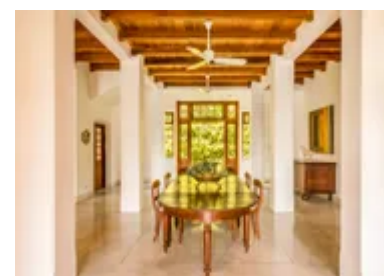
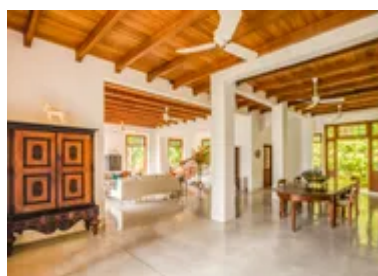
## Location & Local Information

Heenatigala, located in the lush hills of southern Sri Lanka, is a perfect base for exploring the island's natural beauty and rich culture. The area is renowned for its tranquil environment, making it an ideal destination for those seeking relaxation and adventure. Visitors can immerse themselves in the stunning landscapes of the region, with breathtaking views of tea plantations, rolling hills, and the sparkling Indian Ocean.

A short drive from Heenatigala, you'll find pristine beaches such as the famous Unawatuna Beach, perfect for swimming, sunbathing, and water sports. Explore the nearby Galle Fort, a UNESCO World Heritage site, where colonial architecture and cobblestone streets offer a glimpse into Sri Lanka's history. For nature enthusiasts, a visit to the Koggala Lake or the Habaraduwa Wetlands provides opportunities for birdwatching and boat rides. Heenatigala is also an excellent starting point for hikes, wildlife safaris, and cultural tours, offering a diverse range of activities to suit every traveller's interest.

## Local Amenities

Nearest Airport	<b>Mattala Rajapaksa International Airport</b> (118 km)
Nearest Airport 2	<b>Colombo Bandaranaike International Airport</b> (153 km)
Nearest Village	<b>Heenatigala</b> (1 km)
Nearest Town/City	<b>Galle</b> (9 km)
Nearest Restaurant	<b>Sunset beach view restaurant</b> (4 km)
Nearest Bar/Pub	<b>Transit Bar</b> (6 km)
Nearest Supermarket	<b>Damindu Food Corner</b> (4 km)
Nearest Beach	<b>Mihiripenna Beach</b> (5 km)



## What we love

- Dhodampe Villa is a spacious hilltop villa offering seven bedrooms and stunning views over the jungle and paddy fields
- The villa features a large infinity pool, a gym, a games court, and a professional chef to cater to guests
- With a variety of indoor and outdoor spaces, including a sun pavilion and massage spa, the property provides a comfortable and relaxing setting for all guests

## What you should know...

- While the staff and chef are included in your booking, the cost of meals will be charged separately based on your menu choices. This is to be paid locally in cash - which we recommend taking out prior to your arrival

# Terms & Conditions

- **Security deposit:** A deposit equivalent to the price for 1 night is paid in cash to the owner upon arrival and refunded upon departure, subject to full inspection.
- **Arrival time:** 2.30 p.m. – 8.00 p.m.
- **Departure time:** 11.00 a.m.
- **Energy costs included?:** Yes.
- **Linen & towels included?:** Yes.
- **Pets welcome?:** Not allowed.
- **Other Ts and Cs:** Weddings, stag/hen parties and any special events are on request only and subject to prior arrangement with the owner and additional charges. While the staff and chef are included in your booking, the cost of meals will be charged separately based on your menu choices. This is to be paid locally in cash - which we recommend taking out prior to your arrival.
- **Changeover day:** Flexible.
- **End of stay cleaning available?:** Yes. However, guests are required to leave the accommodation clean, tidy and in the same condition as on their arrival. Any extra cleaning, laundry, maintenance and/or rubbish disposal required will be charged against the security deposit.
- **Smoking Allowed?:** Outside only.
- **Minimum stay:** 7 nights in peak season. 2 nights during all other seasons.
- **Tax:** Included.
- **Pool towels included?:** Yes.
- **Pool opening dates?:** Please note that pool opening dates are subject to local weather conditions and pool maintenance requirements and that cooler months may not be suitable for swimming.