

Herbert Townhouse

Region: The South East **Sleeps:** 12

Overview

Step into a world of refined elegance at this five-story townhouse on Herbert Townhouse, nestled in the prestigious Knightsbridge neighbourhood of London. Just a stone's throw from Harrods and moments from Hyde Park, this spacious home offers an ideal setting for your city escape. With tastefully designed interiors, six beautifully appointed bedrooms, and thoughtfully arranged living spaces, the property combines comfort and charm to create an inviting retreat for families or groups.

Enjoy the convenience of a fully equipped kitchen, perfect for preparing meals to share in the stylish dining area. Relax in one of the comfortable living rooms or retreat to the tranquil bedrooms, some featuring en-suite bathrooms and Smart TVs. With its prime location close to designer boutiques, world-class dining, and cultural landmarks, this townhouse offers an exceptional opportunity to experience London's most vibrant and sought-after district.

Facilities

Wi-Fi/Internet • Historical Sites • City Homes & Apartments • Gym/Fitness Room • Wow Factor • Townhouse/Apartment • Ideal for Babies & Toddlers • Ideal for Kids • Ideal for Teens • <1hr to Airport • Dishwasher • Smart TV • Sauna/Steam • Outdoor Pursuit & Activities • Tourist Towns & Villages



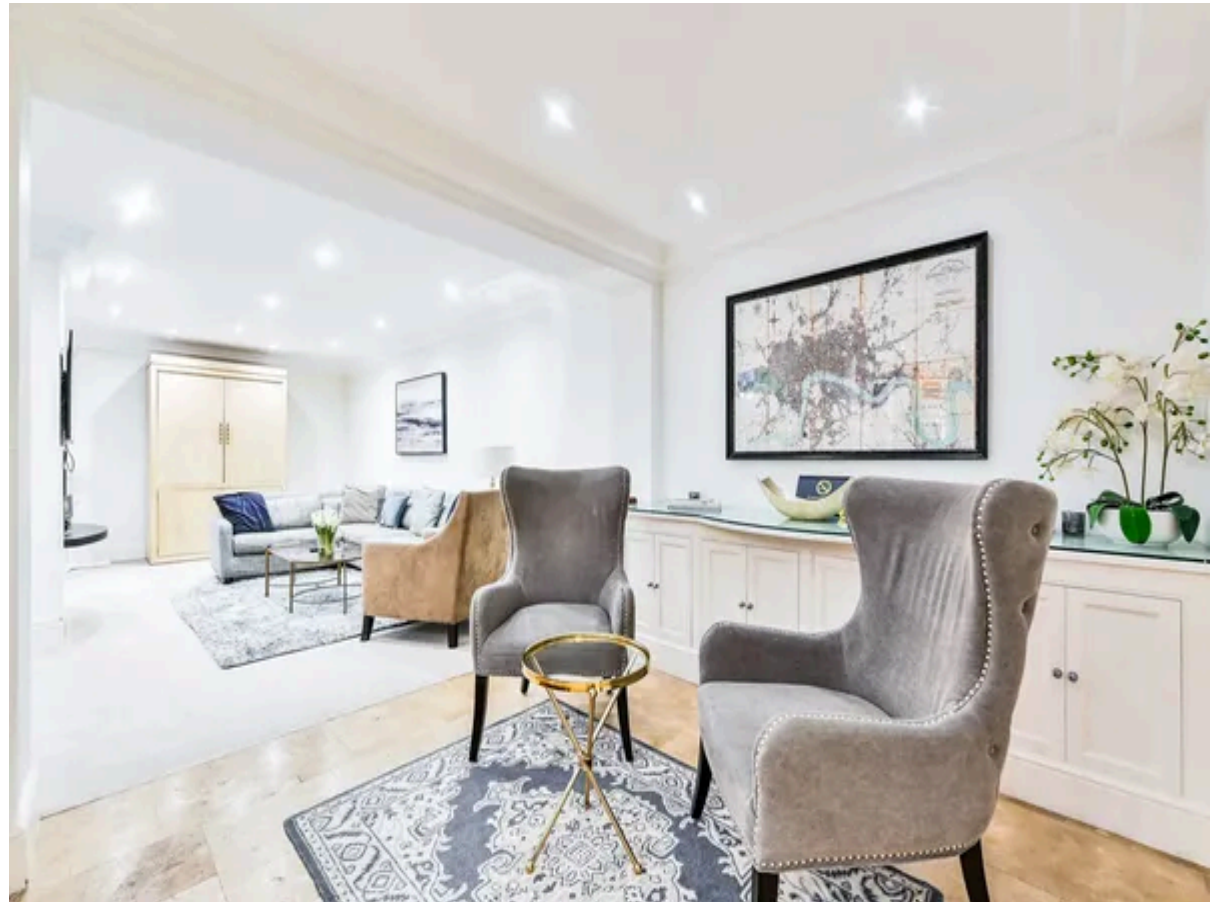
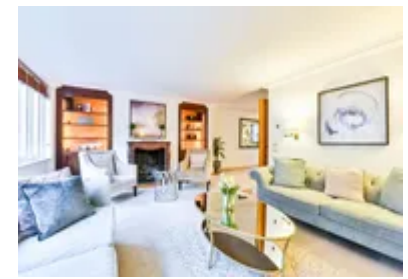
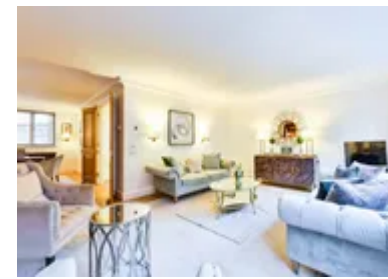
Interior & Grounds

Interiors

- Bedroom double bed with en-suite bath
- Bedroom double bed with en-suite shower
- Master Bedroom king size bed with en-suite bathroom, Smart TV and walk-in closet
- Bedroom with double bed en-suite bathroom
- Bedroom with double bed with en-suite bathroom
- Bathroom with shower
- Reception room with Smart TV and Patio access
- Kitchen with breakfast bar
- Dining room
- Drawing room
- Double Reception with Smart TV
- Study
- Gym
- Sauna
- Garage
- Bedroom double bed (could be used as a Staff accommodation)

Additional Facilities

- Terrace patio
- Microwave
- Dishwasher



Location & Local Information

In the heart of Knightsbridge, Herbert Townhouse enjoys a prime location in one of London’s most prestigious neighbourhoods. This iconic area is famed for its luxurious appeal, home to the world-renowned Harrods and Harvey Nichols department stores and an array of high-end designer boutiques along Sloane Street. Knightsbridge blends classic British elegance with a cosmopolitan flair, offering a vibrant dining scene with Michelin-starred restaurants, chic cafes, and traditional pubs, all just moments from your doorstep.

A short stroll away, Hyde Park provides a serene retreat from the city’s energy. From horse riding in the park to paddle boating on the Serpentine, it’s the perfect spot to unwind or enjoy family outings. Cultural landmarks like the Victoria and Albert Museum, the Natural History Museum, and the Royal Albert Hall are also within easy reach, making Knightsbridge an exceptional location for experiencing the best of London.

Local Amenities

Nearest Airport	London City Airport (11miles)
Nearest Train Station	Knightsbridge (Underground) (1 mile)
Nearest Restaurant	Harry's Dolce Vita (1 mile)
Nearest Bar/Pub	Baccarat Bar (2 miles)
Nearest Supermarket	Waitrose & Partners (1 mile)



What we love

- This five-story townhouse is located on Herbert Townhouse in the heart of Knightsbridge, close to Harrods and Hyde Park.
- The property features six bedrooms, multiple living areas, and a fully equipped kitchen, making it ideal for families or groups.
- Its central location offers easy access to London's top attractions, shopping, and dining options.

Terms & Conditions

- **Security deposit:** Credit card details are required 2 weeks prior to departure for pre-authorisation.
- **Arrival time:** 16:00 - 00:00
- **Departure time:** 10:00
- **Energy costs included?:** Yes, included in the rental price
- **Linen & towels included?:** Yes, included in the rental price
- **Pets welcome?:** Not allowed.
- **Changeover day:** Flexible.
- **End of stay cleaning available?:** Extra £600, payable to Oliver's Travels with the balance payment. Guests are required to leave the accommodation clean, tidy and in the same condition as on their arrival. Any extra cleaning, laundry, maintenance and/or rubbish disposal required will be charged against the security deposit.
- **Smoking Allowed?:** Smoking & Vaping are not permitted.
- **Minimum stay:** 4 nights during Christmas and New year. 3 nights during all other periods. From April 2026, minimum stay is 5 nights.
- **Heating costs included?:** Yes, included in the rental price
- **Internet access?:** Wi-Fi internet connection included.