

# Menai Manor

Region: Anglesey Sleeps: 16

## Overview

Nestled by the iconic Menai Suspension Bridge, Menai Manor is a beautifully decorated seven-bedroom house, offering a perfect retreat for up to 16 guests. Built in 1876, the property has been thoughtfully designed to reflect the rich history of Anglesey, the house combines charm and character with modern comforts, creating a welcoming space for families, friends, and pets alike. With breathtaking views of the Menai Strait, nearby bridges, and the majestic Snowdonia range, this property offers a truly unforgettable backdrop for your holiday.

Inside, the manor boasts two ground-floor bedrooms with walk-in showers, making it more suitable for guests with mobility needs. The large dining room is perfect for enjoying meals together and creating lifelong memories with loved ones. Relax in the hot tub as you take in the serene surroundings or cosy up by the log fire during colder months. In the summer fire up the BBQ and enjoy al fresco dining while soaking in the beauty of the area. The fully equipped kitchen and living spaces ensure a stress-free and comfortable stay for everyone.

Set in an Area of Outstanding Natural Beauty, Menai Manor is perfectly located to explore Anglesey's coastal paths, stunning beaches, and nearby Snowdonia National Park. Discover the charm of local towns and villages, embrace Welsh culture, or simply unwind in this idyllic setting – the perfect getaway all year round.

## Facilities

Fishing • Walk to Village • Romantic • Walking/Hiking Paths • Ideal for Kids • Horse Riding • Historical Sites • Tennis Nearby • Cycling • Recommended • Sailing • Golf Nearby • Ideal for Xmas/NY • Boat Trips • Go-Karting • Chef/Cook Available • Manor • Special Offer • Ideal for Teens • Has Discount • Cots (Cribs) • Pets on Request • Beach Nearby • Instagrammable • Ground Floor Bed & Bath • Walk to Restaurant • Parking Space • Wi-Fi/Internet • BBQ • Decorated for Christmas • Rural Location • Easy By Train • Washing Machine • Outstanding Landscapes • Coffee Machine • Hairdryer • Outdoor Pursuit & Activities • Tourist Towns & Villages • Laptop Friendly Workspace • Hot Tub • Tumble Dryer • Dishwasher • Microwave • Smart TV • Outdoor Games • Working Fireplace/Woodburner • Fire Pit • Heating • New Villas 2025 • Aquarium • Climbing • Kid-friendly excursions • Water excursions/Boat trips • Water park • Forest park/High-rope course • Catering Available • Playground nearby • No car required • Board games • Children's books • Decorate For Christmas • Ideal for Babies & Toddlers • Food blender • High Chair(s)



# Interior & Grounds

## Menai Manor

### Ground Floor

- Dining Room
- Fully equipped kitchen with island and balcony access
- Drawing room with fireplace
- Spacious hallway
- Cloakroom
- Bedroom with double bed and ensuite bathroom with walk in shower (can be made up as twin beds on request)
- Bedroom with double bed and ensuite bathroom with walk in shower (can be made up as twin beds on request)

### First Floor

- Master bedroom with double bed, mountain views and an ensuite bathroom
- Bedroom with double bed, mountain views and an ensuite bathroom
- Bedroom with double bed, views of the Britannia Bridge and an ensuite bathroom
- Bedroom with double bed and mountain views enjoyed from a window seat
- Bedroom with a bunk bed, and twin single beds
- Family bathroom

### Exterior

- Terrace with dining table
- Outstanding views
- Five acres of gardens and woodlands
- BBQ
- Hot tub
- Parking for up to 6 cars

### Additional Facilities

- Wifi
- Laundry facilities
- Smart TV
- Fireplace
- Fire pit
- Coffee machine

*\*Indoor swimming pool to be installed and available for use in 2026, from May to September. Please enquire for more details.*



# Location & Local Information

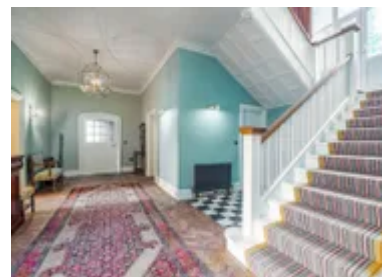
Located in a tranquil corner of Anglesey, Menai Manor offers a serene escape surrounded by nature with five acres of gardens and woodlands to explore. The island itself is a haven for outdoor enthusiasts, with its unspoiled landscapes, coastal paths, and abundant wildlife. Explore the Anglesey Coastal Path, which winds through dramatic cliffs, sandy beaches, and hidden coves, or visit the nearby Newborough Forest, a peaceful sanctuary perfect for walking, cycling, or spotting red squirrels. The towering peaks of Snowdonia are just across the Menai Strait, offering endless opportunities for hiking, climbing, or simply enjoying the breathtaking mountain views.

That said, the house perfectly balances a sense of peace and seclusion with convenient access to nearby towns and amenities. The charming town of Menai Bridge is within walking distance, just 15 minutes along the road or a scenic 7-minute stroll via the Belgian Promenade. Here, you'll find a selection of independent shops, welcoming cafés, excellent restaurants, and the iconic Menai Suspension Bridge, a masterpiece of 19th-century engineering. Just a short drive away, Beaumaris invites you to explore its impressive castle, enjoy the waterfront pier, or take a boat trip to Puffin Island for memorable wildlife experiences. For a broader mix of culture, shopping, and dining, the bustling market town of Bangor lies just across the strait.

Whether you're seeking peaceful nature walks, cultural exploration, or adventure in Snowdonia, Menai Manor's location provides the perfect base to experience the best of Anglesey and North Wales.

## Local Amenities

Nearest Airport	<b>Liverpool John Lennon Airport</b> (134 km)
Nearest Airport 2	<b>Manchester Airport</b> (150 km)
Nearest Bar/Pub	<b>Several in Menai Bridge</b> (1 km)
Nearest Beach	<b>Beaumaris Beach</b> (7.5 km)
Nearest City	<b>Bangor</b> (5 km)
Nearest Ferry Port	<b>Holyhead Ferry Port</b> (34.5 km)
Nearest Golf	<b>Henllys Golf Club</b> (8.5 km)
Nearest National Park	<b>Snowdonia</b> (13.5 km)



Nearest Restaurant	<b>Dylans (1 km)</b>
Nearest Shop	<b>Dylans - Baked Goods and General Store (1 km)</b>
Nearest Supermarket	<b>Waitrose, Menai Bridge (1 km)</b>
Nearest Tennis	<b>Bangor Tennis Club (4 km)</b>
Nearest Town	<b>Menai Bridge (1 km)</b>
Nearest Train Station	<b>Bangor Train Station (4.5 km)</b>

---

## What we love

- Enjoy stunning views of the Menai Strait, Snowdonia, and iconic nearby bridges, set in tranquil Anglesey.
- Relax in the hot tub, cosy up by the log fire, or fire up the BBQ for year-round comfort.
- Menai Manor's thoughtful décor reflects Anglesey's rich heritage, encouraging you to soak up the island's traditional Welsh culture.
- There is private parking for up to 6 cars.

## What you should know...

- Menai Manor is pet-friendly, but please note that an additional cost applies for bringing your furry friends along. See T&Cs for more information.
- A cot and highchair are available for guests travelling with young children.
- While two ground-floor bedrooms with walk-in showers offer convenience, the house's historic nature may pose some accessibility limitations. Please enquire for more details.
- Please ensure that children are supervised at all times, particularly when near the hot tub. Children under 5 should not use the hot tub.

# Terms & Conditions

- **Security deposit:** £1000 charged to client's credit card as a pre-authorisation at least 2 weeks prior to arrival and refunded two weeks after departure, subject to full inspection.
- **Arrival time:** 4:00 pm
- **Departure time:** 10:00 am
- **Energy costs included?:** Yes, included in the rental price
- **Linen & towels included?:** Yes, included in the rental price
- **Pets welcome?:** Yes, up to 2 small/medium, well behaved dogs are welcome on request. We ask that they remain downstairs and off furniture. They are subject to an additional charge of £60 per stay. A welcome pack is provided.
- **Changeover day:** Flexible.
- **End of stay cleaning:** Standard changeover clean included in the price. Guests are required to leave the accommodation clean, tidy and in the same condition as on their arrival. Any extra cleaning, laundry, maintenance and/or rubbish disposal required will be charged against the security deposit.
- **Smoking Allowed?:** Smoking and vaping is permitted outside only. Please dispose of waste in the sand bucket provided.
- **Minimum stay:** 2 nights. 7 nights at Christmas and 5 nights over New Years.
- **Heating costs included?:** Yes, included in the rental price
- **Pool towels included?:** Yes, included in the rental price
- **Stag & Hen Do Allowed? :** On request