

Redcliffe Apartment

Region: The South East Sleeps: 4

Overview

Welcome to this charming two-bedroom, two-bathroom apartment nestled in the heart of Chelsea, one of London's most desirable neighbourhoods. The apartment occupies the entire first floor of a classic period building; this elegant home offers privacy and an abundance of natural light. From the moment you step inside, the beautifully decorated living room invites you to unwind with its stylish design and cosy atmosphere. The large sash windows bathe each room in sunlight, highlighting the apartment's spacious layout.

The main bedroom, located at the rear of the apartment, serves as a peaceful retreat with a newly renovated en-suite bathroom. The second bedroom, equally inviting, provides a snug space for family or guests and is adjacent to the second bathroom. This delightful apartment blends period charm with modern comforts, creating a perfect base to explore Chelsea and beyond. Whether for a short or extended getaway, this property offers an exquisite balance of elegance, space, and convenience.

Facilities

Ideal for Kids • Historical Sites • City Homes & Apartments • Ideal for Teens • Townhouse/Apartment • Wi-Fi/Internet • On-Street Parking • Coffee Machine • Tourist Towns & Villages • TV • Laptop Friendly Workspace • Dishwasher • Microwave • Ideal for Babies & Toddlers



Interior & Grounds

Interior

- Spacious living room with fireplace and TV
- Glass top dining table with office space and bookshelf
- Bedroom with double bed and TV with en-suite bathroom with walk-in rainfall shower
- Bedroom with double bed, wardrobe and bookshelf
- Bathroom with shower and washbasin
- Kitchenette with dishwasher and L'Or coffee machine

Additional Facilities

- Parking



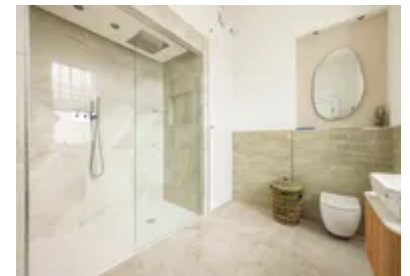
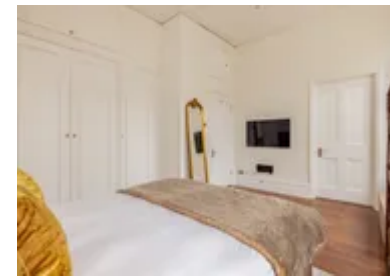
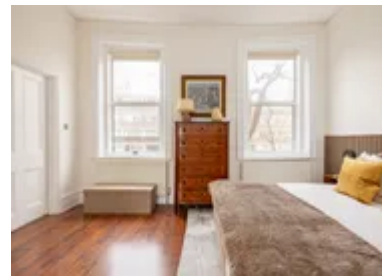
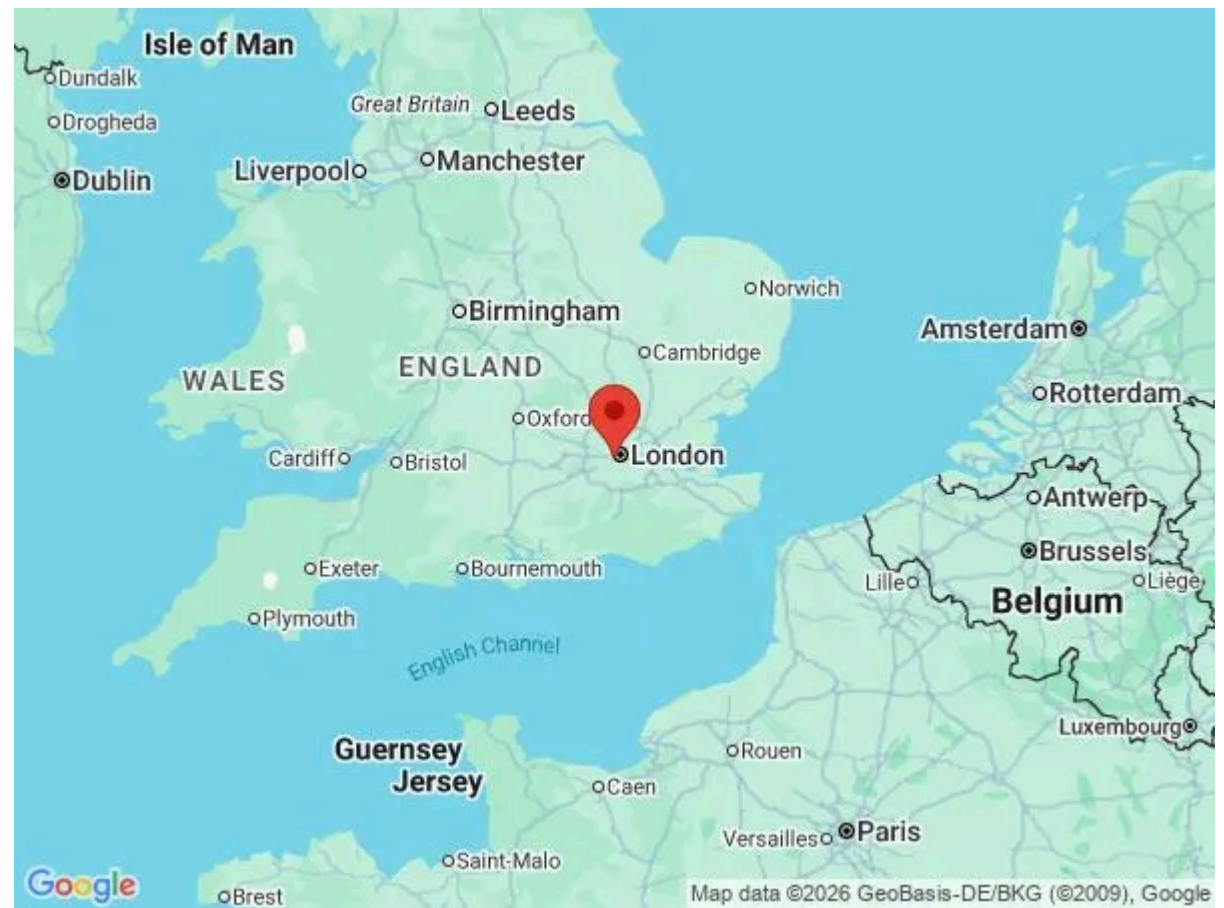
Location & Local Information

Chelsea, one of London's most iconic neighbourhoods, is renowned for its vibrant blend of history, culture, and modern sophistication. Strolling through its charming streets, you'll discover a rich tapestry of architectural beauty, from classic Victorian townhouses to contemporary boutiques. The famous King's Road, once the epicentre of the Swinging Sixties, now offers an eclectic mix of high-end fashion, unique shops, and gourmet dining experiences. Art enthusiasts will appreciate the neighbourhood's proximity to renowned galleries, such as the Saatchi Gallery, while food lovers can indulge in an array of top-tier restaurants and cosy cafes.

Nestled by the River Thames, Chelsea offers picturesque riverside walks and serene garden squares, providing a peaceful escape from the bustling city. The neighbourhood's prime location ensures easy access to central London's attractions, with convenient transport links via nearby West Brompton and Earls Court stations. Chelsea embodies the perfect balance of lively urban life and tranquil retreat, making it a coveted destination for visitors.

Local Amenities

Nearest Airport	London Heathrow Airport (15 miles)
Nearest Train Station	Earls Court Station, Warwick Road (underground station) (1 mile)
Nearest Restaurant	Stecca (1 mile)
Nearest Bar/Pub	Hollywood Arms (1 mile)
Nearest Supermarket	Bayley & Sage (1 mile)
Sightseeing	Saatchi Gallery (2 mile)



What we love

- This two-bedroom, two-bathroom apartment is situated on the first floor of a classic Chelsea-period building.
- The apartment features a spacious living room with large windows, providing ample natural light.
- Both bedrooms offer comfortable accommodations, with the main bedroom including an en-suite bathroom.

Terms & Conditions

- **Security deposit:** Credit card details are required 2 weeks prior to departure for pre-authorisation.
- **Arrival time:** 15:00 - 20:00
- **Departure time:** 10:00
- **Energy costs included?:** Yes, included in the rental price
- **Linen & towels included?:** Yes, included in the rental price
- **Pets welcome?:** not allowed.
- **Changeover day:** Flexible.
- **End of stay cleaning:** Standard changeover clean included in the price. Guests are required to leave the accommodation clean, tidy and in the same condition as on their arrival. Any extra cleaning, laundry, maintenance and/or rubbish disposal required will be charged against the security deposit.
- **Smoking Allowed?:** Smoking & Vaping are not permitted.
- **Minimum stay:** 3 days. All other durations on request.
- **Heating costs included?:** Yes, included in the rental price
- **Tax:** Tourist Taxes not applicable
- **Internet access?:** Wi-Fi internet connection included.