

# Stall Apartment II

**Region:** The South West   **Sleeps:** 2

---

## Overview

Welcome to The Stall Apartment II, a charming 1-bedroom apartment in the heart of Bath. Nestled within the serene grounds of the modern St Catherine's Hospital redevelopment, this stylish retreat offers a peaceful sanctuary from iconic landmarks like the Roman Baths and Thermae Spa. With its tranquil courtyard garden and contemporary design, this apartment is the perfect base for your Bath getaway.

The apartment boasts a thoughtfully designed interior featuring a comfortable king-size bed, a sleek bathroom, and a fully equipped kitchen and living area. Whether preparing a home-cooked meal or exploring local dining options, you'll find everything you need at your fingertips. Enjoy the peaceful courtyard, relax on comfortable outdoor furniture, and immerse yourself in the vibrant atmosphere of Bath. Your stay here offers a memorable experience and contributes to the ongoing charitable work supporting the local community.

## Facilities

Wi-Fi/Internet • TV • Historical Sites • City Homes & Apartments • Walk to Village • Laptop Friendly Workspace • Has Discount • Special Offer • Townhouse/Apartment • Ideal for Babies & Toddlers • Ideal for Kids • Ideal for Teens • Walk to Restaurant • <1hr to Airport • Tourist Towns & Villages



# Interior & Grounds

## *Interior*

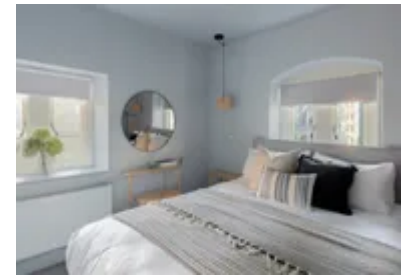
- Kitchen with dining table and two seats
- Living room with TV and ironing board
- Bedroom with king size bed
- Bathroom with shower rainfall

## *Exterior*

- Shared Courtyard

## **Additional Facilities**

- Small table with bench in bedroom with bedside table
- Coffee table with small bookshelf
- Paid parking



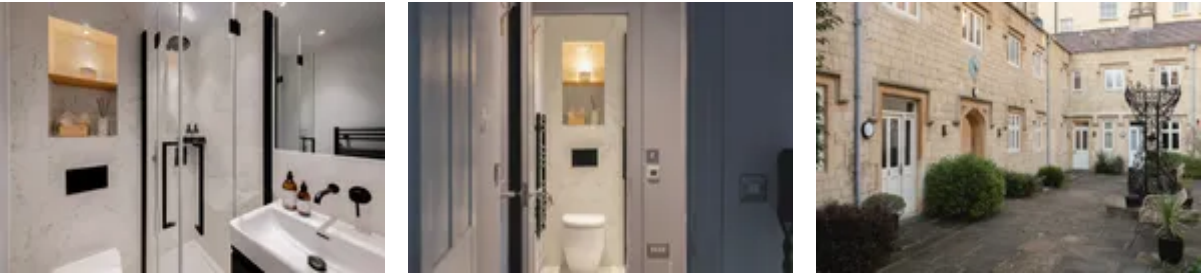
# Location & Local Information

The Stall Apartment II is ideally situated in the heart of Bath, a city renowned for its rich history and stunning architecture. Just a stone's throw from the Roman Baths and Thermae Spa, the apartment offers easy access to Bath's most iconic attractions. Wander through the cobbled streets and discover landmarks like Bath Abbey, Pulteney Bridge, and The Circus Bath, all within a short stroll. The vibrant neighbourhood is filled with charming boutiques, cafes, and restaurants, allowing you to experience the true essence of this UNESCO World Heritage city.

The area surrounding St Catherine's Hospital is peaceful yet central, offering a quiet retreat amidst Bath's bustling atmosphere. With excellent public transport links, including Bath Spa train station just a short walk away, exploring the city and beyond is effortless. Whether you're soaking in history, shopping, or enjoying a leisurely walk along the River Avon, this prime location makes it easy to immerse yourself in Bath's unique charm.

## Local Amenities

Nearest Airport	Bristol Airport (19 miles)
Nearest Train Station	Bath Spa Railway (1 mile)
Nearest Restaurant	Giggling Squid (1 mile)
Nearest Bar/Pub	Juno Bar & Kitchen (1 mile)
Nearest Supermarket	Marks and Spencer (1 mile)
Sightseeing	The Jane Austen Centre (1 mile)



## What we love

- The Stall Apartment II is a one-bedroom apartment located in the central area of Bath, offering easy access to local landmarks like the Roman Baths and Thermae Spa.
- The apartment includes a fully equipped kitchen, a comfortable living area, and a king-size bed for a restful stay.
- Guests can enjoy the peaceful shared courtyard garden, which provides a relaxing outdoor space in the city's heart.

# Terms & Conditions

- **Security deposit:** Credit card details are required 2 weeks prior to departure for pre-authorisation.
- **Arrival time:** 15:00 - 20:00
- **Departure time:** 10:00
- **Energy costs included?:** Yes, included in the rental price
- **Linen & towels included?:** Yes, included in the rental price.
- **Pets welcome?:** not allowed.
- **Changeover day:** Flexible.
- **End of stay cleaning available?:** Yes. However, guests are required to leave the accommodation clean, tidy and in the same condition as on their arrival. Any extra cleaning, laundry, maintenance and/or rubbish disposal required will be charged against the security deposit.
- **Smoking Allowed?:** Smoking & Vaping are not permitted.
- **Minimum stay:** 2 days. All other durations on request.
- **Heating costs included?:** Yes, included in the rental price.
- **Tax:** Tourist Taxes not applicable
- **Internet access?:** Wi-Fi internet connection included.