

# Stall Apartment

**Region:** The South West   **Sleeps:** 2

---

## Overview

Nestled within the newly redeveloped St Catherine's Hospital, The Stall apartment offers a serene sanctuary 50 meters from the Roman Baths and behind the famous Thermae Spa. This one-bedroom apartment faces a peaceful courtyard garden, providing a quiet retreat amidst Bath's lively city centre. Perfect for those seeking both convenience and relaxation, the apartment is designed to ensure a comfortable stay, with a modern kitchen, a cosy living area, and a stylish bathroom.

The bedroom, featuring a king-size bed with premium linens, invites a restful night's sleep after a day of exploring the city. The sleek bathroom includes quality toiletries for added comfort. Guests also have access to a communal courtyard to unwind in a calm, green space. Located just steps from Bath's top attractions, The Stall apartment is an ideal base to experience the city's charm while contributing to the community through the charitable work supported by St Catherine's Hospital.

## Facilities

Wi-Fi/Internet • Historical Sites • City Homes & Apartments • Walk to Village • Laptop Friendly Workspace • Has Discount • Special Offer • Townhouse/Apartment • Ideal for Babies & Toddlers • Ideal for Kids • Ideal for Teens • Walk to Restaurant • <1hr to Airport • Tourist Towns & Villages



# Interior & Grounds

## *Interior*

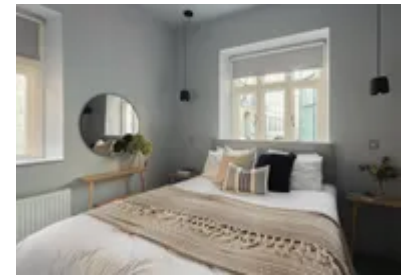
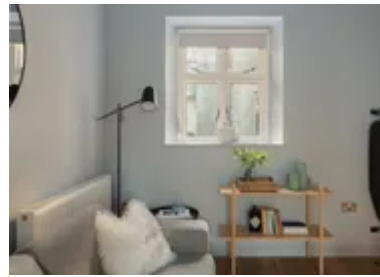
- Living room with TV and dining table with two seats
- Fully equipped kitchen
- Bedroom with king size bed with en-suite
- Bathroom with rainfall shower

## *Exterior*

- Shared courtyard garden

## **Additional Facilities**

- Foldable Ironing board
- Small bookshelf and coffee table
- Paid parking



# Location & Local Information

The Stall apartment is ideally located in the historic and vibrant heart of Bath, offering easy access to the city's most iconic landmarks. Just a stone's throw from the Roman Baths, Thermae Spa, and Bath Abbey, guests can step back in time as they stroll through the cobbled streets, uncovering Bath's rich heritage and stunning Georgian architecture. The UNESCO World Heritage site of Bath is a true gem, where history and modern life blend seamlessly.

Beyond the famous landmarks, the area is full of charming boutiques, cafés, and restaurants, perfect for exploring on foot. Enjoy a leisurely walk along Pulteney Bridge or wander through The Circus, one of Bath's most stunning architectural marvels. With public transport links nearby and Bath Spa train station just a short stroll away, you're well-connected to the rest of the city and beyond, ensuring a memorable stay in this enchanting part of England.

## Local Amenities

Nearest Airport	Bristol Airport (19 miles)
Nearest Train Station	Bath Spa Railway (1 mile)
Nearest Restaurant	Opa Bath (1 mile)
Nearest Bar/Pub	Square Grill Brasserie Restaurant & Piano Bar (1 mile)
Nearest Supermarket	Marks and Spencer (1 mile)
Sightseeing	Bath Abbey (1 mile)



## What we love

- The Stall apartment is located in the heart of Bath, just 50 meters from the Roman Baths and close to local attractions.
- This one-bedroom apartment features a modern kitchen, a comfortable living area, and a peaceful courtyard garden.
- Guests can easily access Bath's historic sites, shops, and public transport options.

# Terms & Conditions

- **Security deposit:** Credit card details are required 2 weeks prior to departure for pre-authorisation.
- **Arrival time:** 15:00 - 20:00
- **Departure time:** 10:00
- **Energy costs included?:** Yes, included in the rental price.
- **Linen & towels included?:** Yes, included in the rental price.
- **Pets welcome?:** not allowed.
- **Changeover day:** Flexible.
- **End of stay cleaning available?:** Yes. However, guests are required to leave the accommodation clean, tidy and in the same condition as on their arrival. Any extra cleaning, laundry, maintenance and/or rubbish disposal required will be charged against the security deposit.
- **Smoking Allowed?:** Smoking & Vaping are not permitted.
- **Minimum stay:** 2 days. All other durations on request.
- **Heating costs included?:** Yes, included in the rental price.
- **Tax:** Tourist Taxes not applicable
- **Internet access?:** Wi-Fi internet connection included.