

Apartment Boulainvilliers

Region: Paris Sleeps: 6

Overview

Nestled just steps away from the Seine River, the Trocadéro, and the iconic Eiffel Tower, this elegant 3-bedroom apartment offers a peaceful retreat for up to 6 guests. The apartment is located on the 6th floor and has elevator access. It features classic parquet flooring throughout. With its eye-catching chandelier and large bookcase, the living room is the perfect space for unwinding. French doors open to a balcony, allowing guests to enjoy the views, while the adjacent dining area comfortably seats six.

The apartment offers three well-appointed bedrooms. The first is serene, featuring a double bed and calming decor. The second boasts a King-sized bed and a Juliette balcony. The third bedroom, with its grey panelling and two single beds, also includes an en-suite bathroom. A fully equipped kitchen, two bathrooms, and a separate WC complete the home. Guests will feel at ease in this inviting, home-like atmosphere, designed for both relaxation and convenience.

Facilities

Ideal for Kids • Historical Sites • City Homes & Apartments • Ideal for Teens • Wow Factor • Walk to Restaurant • Wi-Fi/Internet • Tourist Towns & Villages • Heating • Ideal for Babies & Toddlers



Interior & Grounds

Interior

- Reception room with bookshelf and intricate chandelier
- Dining table seating for six with big windows for natural light
- Kitchen with breakfast table and washing machine
- Bedroom with double bed, bedside table, sliding mirror wardrobe
- Bedroom with king size bed, bedside table, seating and Juliette balcony
- Bedroom with twin beds, sliding mirror wardrobe and workspace
- Bathroom with walk-in waterfall shower
- Bathroom with bathtub and shower
- WC

Exterior

- Outdoor balcony with patio furniture

Additional Facilities

- Elevator
- Heating



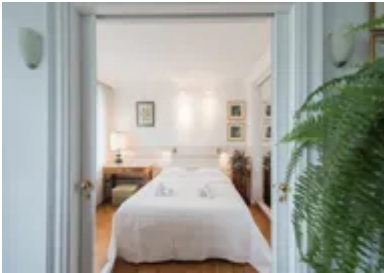
Location & Local Information

Situated in one of Paris' most sought-after neighbourhoods, this apartment places you amid iconic landmarks and charming streets. Just a short stroll from the majestic Eiffel Tower, the Trocadéro, and the banks of the Seine, the location offers unrivalled access to some of Paris' most famous attractions. Explore the nearby museums, gardens, and cultural treasures, or wander along the river to take in the beauty of this historic city.

In addition to its proximity to major sights, the area boasts a lively atmosphere, with cafés, boutique shops, and local markets just around the corner. Whether enjoying a leisurely coffee on a sidewalk terrace or discovering hidden gems in the surrounding streets, you'll be immersed in Parisian life. With excellent transport links, this neighbourhood offers the perfect base to explore all the magic Paris offers.

Local Amenities

Nearest Airport	Paris Charles de Gaulle Airport (36 km)
Nearest Train Station	Ranelagh, (underground) (850 metres)
Nearest Restaurant	Café À la Fontaine (50 metres)
Nearest Bar/Pub	L'Étrier d'Or Tchin Tchin Bar, (3 km)
Nearest Supermarket	Fruits De Mozart (2 km)
Sightseeing	Eiffel Tower (2 km)



What we love

- This 3-bedroom apartment is near the Seine River, Trocadéro, and the Eiffel Tower, offering convenient access to popular Parisian landmarks.
- The apartment features a spacious living and dining area, a well-equipped kitchen, and three comfortable bedrooms, accommodating up to 6 guests.
- Additional amenities include two bathrooms, a separate WC, and a balcony with views of the surrounding area.

Terms & Conditions

- **Security deposit:** Credit card details are required 2 weeks prior to departure for pre-authorisation.
- **Arrival time:** 15:00 - 21:00
- **Departure time:** 10:00
- **Energy costs included?:** Yes, included in the rental price.
- **Linen & towels included?:** Yes, included in the rental price.
- **Pets welcome?:** Not allowed.
- **Changeover day:** Flexible.
- **End of stay cleaning available?:** Yes. However, guests are required to leave the accommodation clean, tidy and in the same condition as on their arrival. Any extra cleaning, laundry, maintenance and/or rubbish disposal required will be charged against the security deposit.
- **Smoking Allowed?:** Smoking & Vaping not permitted.
- **Minimum stay:** 4-5 nights. All other durations on request.
- **Heating costs included?:** Yes, included in the rental price.
- **Tax:** There is a city tax due to be paid locally which is not included in the rental rate. The amount will be confirmed by your onsite representative when you arrive.
- **Internet access?:** Wi-Fi internet connection included.