

Apartment Vicarage

Region: The South East **Sleeps:** 4

Overview

Apartment Vicarage offers a delightful retreat in a charming 1930s gated building, ideal for couples or small groups seeking a tranquil stay in the heart of Battersea. Situated just moments from Battersea Square's shops and eateries, including the famous Suzette's Crepes and The Woodman's Roast, and close to the scenic Thames River Path, this apartment combines ease of access with a peaceful ambience. The sitting room, filled with natural light, features a TV, dining table, and a sofa bed for two additional guests, making it a versatile space to unwind after exploring.

The double bedroom provides a restful escape with ample wardrobe space, while the modern bathroom is both sleek and practical. The fully equipped kitchen includes a coffee machine to kickstart your mornings. The apartment's unbeatable location and timeless 1930s charm create the perfect base for discovering one of London's most desirable riverside areas—the minimum age requirement is 25 years old.

Facilities

Wi-Fi/Internet • Walk to Village • City Homes & Apartments • Townhouse/Apartment • Ideal for Babies & Toddlers • Ideal for Kids • Ideal for Teens • Walk to Restaurant • Washing Machine • Coffee Machine • TV • Tourist Towns & Villages • Historical Sites



Interior & Grounds

Interior

- Living room with mounted TV and sofa bed
- Kitchenette
- Bedroom with double bed and walled wardrobe
- Bathroom with handheld shower and WC

Additional Facilities

- Heating throughout apartment
- Hairdryer
- Wi-Fi
- TV



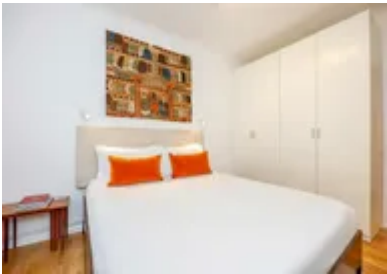
Location & Local Information

Along the scenic banks of the Thames, Battersea is a vibrant, riverside neighbourhood that blends historic charm with modern energy. The area is home to picturesque views, leafy streets, and a wide range of dining, shopping, and entertainment options. Battersea Square, just a short stroll from Apartment Vicarage, offers an eclectic mix of boutique shops, charming cafes, and pubs, perfect for enjoying the local flavour. There's something for every taste, whether savouring crepes at Suzette or a traditional roast at The Woodman.

Battersea is also an ideal location for outdoor enthusiasts. The Thames River Path invites you to explore beautiful waterfront walks, while Battersea Park offers a peaceful green space for relaxation and recreation. With easy access to the heart of London and iconic attractions, including the bustling South Bank and vibrant Clapham, this area perfectly balances tranquillity and urban excitement.

Local Amenities

Nearest Airport	Heathrow Airport (16 miles)
Nearest Train Station	Clapham Junction (1 mile)
Nearest Restaurant	Sushi Cafe, (1 mile)
Nearest Bar/Pub	The Woodman Pub (1 mile)
Nearest Supermarket	Freshmart (1 mile)
Sightseeing	Battersea Power Station (2 miles)



What we love

- The apartment Vicarage is in a 1930s gated block that offers a comfortable and convenient stay near Battersea Square.
- A bright living area, a fully equipped kitchen, and a quiet bedroom provide a relaxing retreat in the city.
- It is located close to the Thames River Path and Battersea Park and is well-suited for short and extended stays.

Terms & Conditions

- **Security deposit:** £500 charged to client's credit card by the owner before/upon arrival and refunded two weeks after departure, subject to full inspection.
- **Arrival time:** 15:00 - 21:00
- **Departure time:** 10:00
- **Energy costs included?:** Yes, included in the rental price.
- **Linen & towels included?:** Yes, included in the rental price.
- **Pets welcome?:** Not allowed.
- **Changeover day:** Flexible.
- **End of stay cleaning available?:** Yes. However, guests are required to leave the accommodation clean, tidy and in the same condition as on their arrival. Any extra cleaning, laundry, maintenance and/or rubbish disposal required will be charged against the security deposit.
- **Smoking Allowed?:** Smoking & Vaping are not allowed.
- **Minimum stay:** 3-5 nights. All other durations on request.
- **Heating costs included?:** Yes, included in the rental price.
- **Tax:** Tourist taxes not applicable.
- **Internet access?:** Wi-Fi internet connection included.