

Apartment Evelyn Gardens

Region: The South East Sleeps: 10

Overview

In the heart of Chelsea, Apartment Evelyn Gardens is a five-bedroom haven designed for those who appreciate both style and comfort. With a prime location near the chic boutiques of Fulham Road and King's Road, this home exudes sophistication and modernity. The spacious formal reception area, filled with natural light, sets the tone for the rest of the house, blending sleek textures and vibrant colours. The conservatory's impressive dining space and floor-to-ceiling patio doors seamlessly connect to the garden terrace, making it perfect for al-fresco dining and sunset cocktails.

Inside, the home blends contemporary design and thoughtful functionality. The state-of-the-art kitchen is a social hub featuring a kitchen island, breakfast bar, and library area. Upstairs, five restful bedrooms provide a peaceful retreat, while the luxurious en-suite bathrooms offer a serene atmosphere. Complete with a home cinema, gym, and sauna, Apartment Vicarage offers everything you need for a memorable stay.

Facilities

Ideal for Kids • Walk to Village • Historical Sites • City Homes & Apartments • Ideal for Teens • Wow Factor • All Bedrooms En-Suite • Townhouse/Apartment • <1hr to Airport • Walk to Restaurant • Wi-Fi/Internet • Tourist Towns & Villages • TV • Laptop Friendly Workspace • Gym/Fitness Room • Ideal for Babies & Toddlers



Interior & Grounds

Lower Ground

- Kitchen leading to Studio area
- TV room with lounge sofas
- Utility room and plant room
- Patio area

Ground Floor

- Reception room with piano and fireplace
- Conservatory with floor-to-ceiling patio doors
- Dining table with seven seats and opulent chandelier
- Kitchen with island and breakfast table and home library

First Floor

- Bedroom with king size bed, ottoman, TV, dressing room, with an en-suite bathroom with rainfall and handheld shower
- Bedroom with queen size bed, dressing room, ottoman, en-suite bathroom with bathtub and electric fireplace with seating and rainfall and handheld shower

Second Floor

- Study room
- Bedroom with queen size bed, ottoman, TV, chandelier and an en-suite bathroom with rainfall and handheld shower with bathtub
- Bedroom with TV, electric fireplace and en-suite bathroom
- Bedroom with queen size bed, wardrobe and chandelier with en-suite bathroom with handheld shower

Exterior

- Outdoor brick and wood styled terrace with Barbecue
- Garden furniture
- Off-street parking for one car

Additional Facilities

- Air-fryer and microwave



- Home-Gym with sauna and shower
- iPad controlled smart technology
- WC (4)

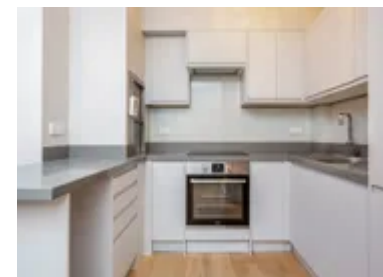
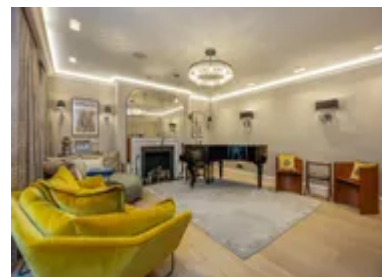
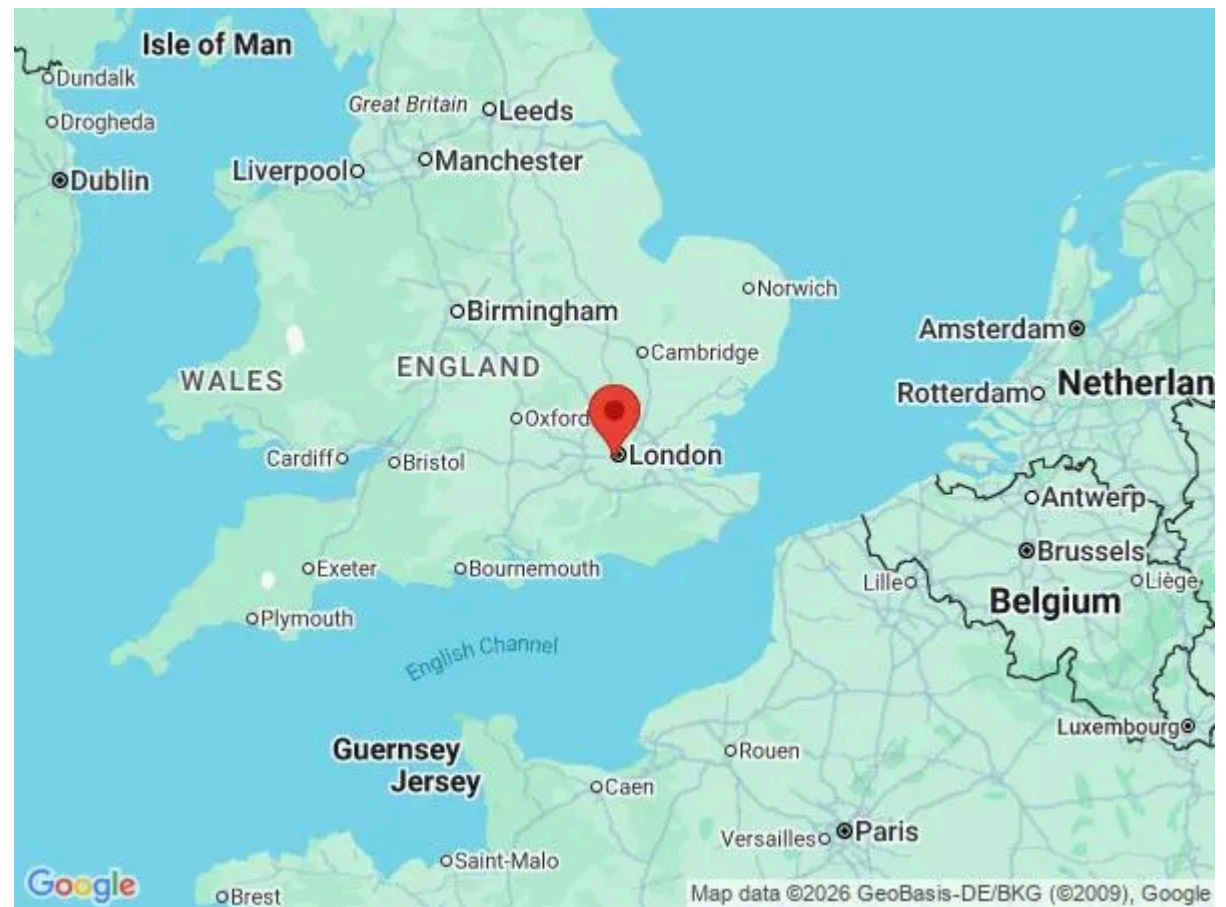
Location & Local Information

In the heart of Chelsea, Apartment Evelyn Gardens places you in one of London's most fashionable and sought-after neighbourhoods. Known for its stylish boutiques, art galleries, and lively atmosphere, Chelsea offers an eclectic mix of high-end shopping, fine dining, and cultural experiences. A short walk from the iconic King's Road and Fulham Road, you'll immerse yourself in the best of London's shopping scene, with renowned designer stores and quaint cafés just around the corner. For art enthusiasts, Chelsea is home to some of London's most prestigious galleries, offering a dynamic blend of contemporary and classic exhibitions.

The area also boasts an abundance of green spaces, including the tranquil Brompton Cemetery and the lush grounds of the nearby Hyde Park. With easy access to Sloane Square and public transport links, Chelsea offers the perfect balance of urban excitement and peaceful retreats. It is an ideal location to explore the city's vibrant culture and history.

Local Amenities

Nearest Airport	London Heathrow Airport (13 miles)
Nearest Train Station	Earls Court (underground) (1 mile)
Nearest Restaurant	Yashin Ocean House (1 mile)
Nearest Bar/Pub	Duke of Clarence (1 mile)
Nearest Supermarket	M&S Simply Food (1 mile)
Sightseeing	Nature Discovery Garden (1 mile)



What we love

- Apartment Evelyn Gardens is a five-bedroom home located in the heart of Chelsea. It offers spacious living areas and modern amenities.
- The property features a large garden terrace, ideal for outdoor dining and relaxation.
- A home gym, cinema room, and fully equipped kitchen provide a comfortable setting for family and leisure stays.

Terms & Conditions

- **Security deposit:** £500 charged to client's credit card by the owner before/upon arrival and refunded two weeks after departure, subject to full inspection.
- **Arrival time:** 15:00 - 21:00
- **Departure time:** 10:00
- **Energy costs included?:** Yes, included in the rental price
- **Linen & towels included?:** Yes, included in the rental price
- **Pets welcome?:** Not allowed.
- **Changeover day:** Flexible.
- **End of stay cleaning available?:** Yes. However, guests are required to leave the accommodation clean, tidy and in the same condition as on their arrival. Any extra cleaning, laundry, maintenance and/or rubbish disposal required will be charged against the security deposit.
- **Smoking Allowed?:** Smoking & Vaping are not permitted.
- **Minimum stay:** 4 night. All other durations on request.
- **Heating costs included?:** Yes, included in the rental price
- **Tax:** Tourist Taxes not applicable.
- **Internet access?:** Wi-Fi internet connection included.