

Maison Maltese

Region: Provence-Alpes **Sleeps:** 8

Overview

In the historic heart of Saint-Rémy-de-Provence, Maison Maltese is a sanctuary of refined sophistication and timeless charm. This late 18th-century residence has been meticulously restored to offer guests an unparalleled stay, where history, art and contemporary design blend harmoniously.

Just steps from the renowned Musée Estrine, this exquisite abode is a testament to the artistry of local craftsmen who have preserved its Provençal soul while infusing it with modern sophistication. Every space within Maison Maltese tells its own story.

Step through the magnificent entrance adorned with Maltese crosses, a doorway admired and photographed daily, and immerse yourself in a world where time slows down. The welcoming salon and dining area envelop you in a colourful and contemporary atmosphere, where curated pieces from architects, designers and painters create an ever-inspiring aesthetic.

The kitchen, an exquisite blend of contemporary style and historical charm, stretches gracefully along the stone walls, showcasing the vibrant work of a Provençal artist based in Paris. Only state-of-the-art appliances (Miele and Smeg, for example) can be found here alongside designer tableware and Beaucaire stone flooring. At the end of the kitchen, doors open up to a charming lane opposite the impressive façade and entrance of Le Musée Estrine.

The beautifully appointed en suite bedrooms on the first and second floors each exude their own character, complete with carefully curated furnishings, opulent bedding, and gorgeous bathrooms adorned with fine detailing such as terracotta tiles, Baux stone or hand-laid mosaics. Some offer indulgent hammam walk-in showers or luxurious bath tubs, inviting you to unwind in sheer bliss.

Ascend further, and you will discover a rooftop retreat like no other. Prepare al-fresco feasts in the outdoor kitchen and serve on the terrace or head for the sun deck and bar overlooking the Musée Estrine below, beside the small yet charming heated pool. At the very top, the outdoor lounge with its ethanol brazier offers unparalleled 360-degree views over Les Alpilles and beyond – an especially idyllic spot at sunset.

With its seamless blend of history, craftsmanship, and modern indulgence, this historic townhouse offers an extraordinary setting whether you are seeking an intimate getaway or a special holiday with family and friends.



Facilities

Hairdryer • Wi-Fi/Internet • Walking/Hiking Paths • Horse Riding • Romantic • Historical Sites • Tennis Nearby • Cycling • TV • Coffee Machine • Wine Tasting • Washing Machine • Air-Con • Golf Nearby • Lift • Wow Factor • Laptop Friendly Workspace • Walk to Village • Private Pool • Instagrammable • Townhouse/Apartment • Pool Safety Feature • Heated Pool • Walk to Restaurant • <1hr to Airport • Tumble Dryer • Dishwasher • Microwave • Safety Deposit Box • All Bedrooms En-Suite • Smart TV • Parking Space • Outstanding Landscapes • Outdoor Pursuit & Activities • Tourist Towns & Villages

Interior & Grounds

Maison Interiors (260m2)

Ground Floor

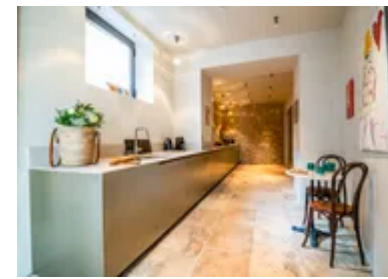
- Main street entrance
- Living and dining room
- Kitchen and pantry, fully equipped including two fridge-freezer, two dishwashers, oven, hob and hood, microwave, wine cellar and freezer, blender, kettle, juicer, toaster, Nespresso Magimix machine, washing machine, dryer, bistro table and two chairs. Door opens to lane near Musée Estrine entrance
- Pantry
- Grand staircase next to piano and vintage sewing machine
- Guest WC and stone basin

First Floor

- Bedroom 1 (36m2) with king-size double bed (180x200cm), TV, portable speaker and loggia with two armchairs, table, books and coffee tray with Nespresso machine. Doors open to small stone balcony (overlooking museum entrance below) with bistro table and two chairs. En suite bathroom with walk-in shower, stone basin and WC
- Bedroom 2 (40m2) with king-size double bed (180x200cm), street view, TV with Netflix/Canal+, long sofa and open bathroom with copper bath, hammam/rain shower, sink, dressing area and separate WC

Second Floor

- Bedroom 3 (38m2) with two single beds (90x200cm, can be joined as a king-size double), museum view, Smart TV with Apple TV and studio area with artwork and desk. En suite bathroom with double walk-in shower, bath and WC
- Bedroom 4 (40m2) with king-size double bed (180x200cm), street view, TV, armchairs and open bathroom with bath, hammam shower, sink, separate WC



and dressing area

Outside Grounds (120m², across the third and fourth levels)

- Small heated pool (approx. 2.5mx3.5m) with safety alarm
- Decked terrace with sun loungers (x2)
- Indoor bar with glass washer and freezer
- Outdoor dining table with 12 chairs and kitchen and electric plancha, blender, juicer, kettle, Nespresso Magimix machine, dishwasher, fridge, microwave
- WC
- Upper rooftop terrace (above pool) with outdoor lounge, ethanol brazier and 360-degree views
- Private and secure parking spot (250m away)

Other Facilities

- Bathrobes
- Provençal toiletries

Location & Local Information

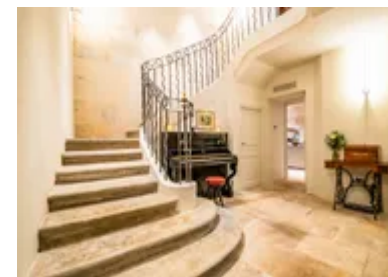
It's hard to imagine a more central and privileged setting – indeed, such a beautiful and upmarket apartment in the heart of bustling Saint-Rémy is a rare find. The grand entrance door is on a narrow road in the old quarter, opposite a bistro with tables out on the lane. At the back of the townhouse, the contemporary kitchen doors open just opposite the entrance of the esteemed Musée Estrine.

Beyond your very own townhouse, wander through Saint-Rémy's picturesque lanes, lined with artisan boutiques, pretty cafes, restaurant terraces beneath the plane trees and wonderful shops. The surrounding streets come alive on a Wednesday morning when the Provençal market takes place – head out early, soak up the ambience and stock up on delicious produce to enjoy on your outdoor terrace. Musée Estrine is of course another highlight on your doorstep with its museum and exhibitions (check opening dates in advance).

If you are interested in Van Gogh's heritage in Saint-Rémy, explore Saint-Paul-de-Mausole monastery, where the great artist painted some of his most famous works. Indeed, art and culture thrive in this characterful town, with summer art markets, galleries and seasonal festivals celebrating the region's creative spirit.

Beyond the artistic town, discover the breathtaking landscapes of Les Alpilles Natural Park, perfect for scenic hikes, cycling, or a leisurely drive through olive groves, pine forests and vineyards. A short journey takes you to Les Baux-de-Provence, a medieval hilltop village with spectacular views from its château – the village is now classified as one of France's 'Plus Beaux Villages'. Picture-perfect Eygalières is also not to be missed with its charming historic centre, Friday morning market and fine dining opportunities.

Sample wine at vineyards within a short drive of Saint-Rémy or venture a little further to the Rhône valley and the renowned village of Châteauneuf-du-Pape. Wine enthusiasts should also head east towards the vineyards



of the Luberon, yet another incredible part of Provence with its perched villages (Gordes and Ménerbes, for example) and idyllic landscapes.

Local Amenities

| | |
|-----------------------|---|
| Nearest Airport | Avignon Airport (20km) |
| Nearest Airport 2 | Nimes Airport (44km) |
| Nearest Airport 3 | Marseille Airport (64km) |
| Nearest Train Station | Avignon TGV (20km) |
| Nearest Town | In the heart of Saint-Rémy (0km) |
| Nearest Restaurant | Opposite the main entrance (A few steps) |
| Nearest Supermarket | Utile (400m) |
| Nearest Tennis | Tennis Club Saint-Rémy (750m) |
| Nearest Golf | Golf des Baux de Provence (11.5km) |
| Nearest City | Avignon (21km) |

What we love

- A rare find – this sophisticated and artistic 18th century townhouse exudes historic charm and Provençal luxury in the heart of Saint-Rémy
- Listen to the church bells as you rest in your beautifully appointed bedrooms with designer furnishings and gorgeous en suite bathrooms
- At the top of the house, prepare al-fresco feasts in your outdoor kitchen or relax by the sun deck, bar and heated pool
- The 360-degree views from the rooftop terrace are incredible, especially at sunset
- Located next to the highly regarded Musée Estrine, the bustling charm of Saint-Rémy-de-Provence is on your doorstep

What you should know...

- There is a private and secure parking spot 250m from the house.
- A beautiful staircase or lift can take you up to all floors, excluding the rooftop terrace. All other terraces can be accessed via the lift.
- Please note the outdoor spaces are on the third and fourth levels with steps and low walls – it goes without saying that children will need to be supervised.
- Please be aware that the minimum stay for Maison Maltese is 3 nights. Shorter stays will only be accepted at the owners discretion.

Terms & Conditions

- **Security deposit:** €5000 paid via wire transfer to the owner at the time of balance and refunded two weeks after departure, subject to full inspection.
- **Arrival time:** 5 PM
- **Departure time:** 10 AM
- **Energy costs included?:** Yes.
- **Linen & towels included?:** Yes.
- **Pets welcome?:** Not allowed.
- **Changeover day:** Flexible.
- **End of stay cleaning available?:** Yes. However, guests are required to leave the accommodation clean, tidy and in the same condition as on their arrival. Any extra cleaning, laundry, maintenance and/or rubbish disposal required will be charged against the security deposit.
- **Smoking Allowed?:** Outside only.
- **Insurance:** Guests are required to be in possession of a valid insurance policy, which covers them for cancellations, loss of personal belongings, personal liability and any accidental damage caused during their stay.
- **Minimum stay:** 3 nights.
- **Tax:** French Visitors Tax payable locally in cash (typically costs €1-€10 per adult per night - please enquire if exact amount is required)
- **Internet access?:** Yes.