

# Apartment Pretoriano

Region: Italy   Sleeps: 11

---

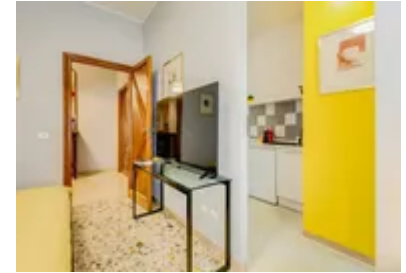
## Overview

Welcome to Apartment Pretoriano, a stylish and spacious retreat designed for large families and groups of friends. Comfortably accommodating up to 11 guests, this inviting home provides the perfect blend of modern convenience and central location. Just 700 meters from Termini Station, you'll have effortless access to Rome's historic landmarks, vibrant piazzas, and authentic dining spots. Whether exploring the city or simply unwinding after a day of sightseeing, this apartment ensures a seamless and enjoyable stay.

With three double bedrooms, a triple bedroom, and two full bathrooms, there's plenty of space for everyone. The fully equipped kitchen makes meal prep easy, while high-speed Wi-Fi, air conditioning in every room, and a private outdoor terrace add to the comfort. Relax with a 4K Smart TV and Netflix, or take advantage of the airport shuttle service for a stress-free arrival. Book your stay now and experience Rome with ease!

## Facilities

Air-Con • Wi-Fi/Internet • Laptop Friendly Workspace • Cots (Cribs) • Lift  
• City Homes & Apartments • Ideal for Babies & Toddlers • Ideal for Kids •  
Ideal for Teens • Walk to Restaurant • <1hr to Airport • Dishwasher •  
Coffee Machine • TV • Heating • High Chair(s) • Tourist Towns & Villages  
• Historical Sites



# Interior & Grounds

## Interior

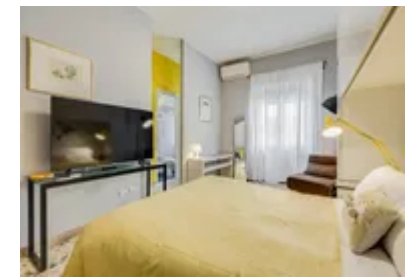
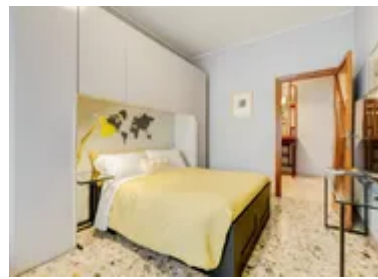
- Hallway with shoe cupboard
- Kitchen with breakfast bar
- Dining table with seating for six
- Living room with sofa-bed and TV
- Bedroom with double bed (190 cm x 160 cm), wardrobe and shelving, TV and seating area
- Bedroom with double bed (190 cm x 160 cm) clothes rack, floor length mirror, TV and seating area
- Bedroom with double bed (190 cm x 160 cm), seating and TV with dressing table
- Bedroom with double bed (190 cm x 160 cm), single bed (190 cm x 90 cm), seating area, vanity desk with chair
- Bathroom with walk-in shower
- Bathroom with shower

## Exterior

- Outdoor balcony terrace with al-fresco dining
- Outdoor wooden patio furniture

## Additional Facilities

- Air conditioning throughout apartment
- 4K Smart TV with Netflix
- Elevator and private entrance
- Dishwasher & Washing machine
- Heating
- Wi-Fi



# Location & Local Information

Located in the heart of Rome, Apartment Pretoriano is in a vibrant and well-connected area, around 700 meters from Termini Station, the city's central transportation hub. This prime location provides easy access to Rome's top attractions, including the magnificent Colosseum and the lively streets of Monti, known for its boutique shops and charming cafés. Whether strolling through the historic streets or hopping on the metro to explore further, everything you need is at your doorstep. The neighbourhood is rich in local culture, with traditional trattorias, international restaurants, and bustling markets that bring the city's authentic charm to life.

Perfect for travellers who want both convenience and atmosphere, this area provides a seamless blend of historical landmarks and modern amenities. Nearby parks offer fresh air, while cultural spots like the National Roman Museum add depth to your Roman experience. Stay here and enjoy the perfect starting point for your adventure in the Eternal City.

## Local Amenities

Nearest Airport	Roma Urbe Airport (10 km)
Nearest Train Station	Repubblica (underground station) (3 km)
Nearest Restaurant	Triclinio Osteria Contemporanea (100 m)
Nearest Bar/Pub	The Apartment Lounge Bar Roma (500 m)
Nearest Supermarket	Rafi Mini Market (400 m)
Sightseeing	Museo Nazionale Romano (3 km)



## What we love

- Apartment Pretoriano offers a spacious and well-equipped stay for families and groups in a central location near Termini Station
- The apartment provides a comfortable and convenient base for exploring Rome with multiple bedrooms, a full kitchen, and modern amenities like high-speed Wi-Fi and a 4K Smart TV
- Its well-connected location ensures easy access to public transport, historic landmarks, and a variety of local dining and shopping options

## What you should know...

- The lift is small but works well and fits just a few people at a time, which is typical of central Rome buildings
- A washing machine is provided, but there's no tumble dryer
- All rooms have A/C units, but we kindly ask guests to turn them off when leaving the apartment, per local energy guidelines
- We can help arrange a private shuttle for your arrival or departure. Just let us know in advance for a personalised quote

# Terms & Conditions

- **Security deposit:** Credit card details are required 2 weeks prior to departure for pre-authorisation.
- **Arrival time:** 3 pm
- **Departure time:** 10 am
- **Energy costs included?:** Yes, included in the rental price.
- **Linen & towels included?:** Yes, included in the rental price.
- **Pets welcome?:** Not allowed.
- **Changeover day:** Flexible.
- **End of stay cleaning available?:** Not included in the rental price, extra €80 to be paid with the balance due. However, guests are required to leave the accommodation clean, tidy and in the same condition as on their arrival. Any extra cleaning, laundry, maintenance and/or rubbish disposal required will be charged against the security deposit
- **Smoking Allowed?:** Smoking & Vaping not permitted.
- **Minimum stay:** 3 - 7 nights, depending of season. All other durations on request.
- **Heating costs included?:** Yes, included in the rental price.
- **Tax:** There is a city tax due to be paid locally in cash which is not included in the rental rate. The amount will be confirmed by your onsite representative when you arrive.
- **Internet access?:** Wi-Fi internet connection included.
- **Property Licence Number:** IT058091C2DEXKADYD