

Apartment Bardi

Region: Florence Sleeps: 6

Overview

Step into the charm of Florence with a stay at Apartment Bardi, a beautifully designed retreat where classic elegance meets modern comfort. This spacious, single-level apartment (143 sqm) welcomes up to six guests, offering a thoughtfully arranged layout with three inviting bedrooms, each with its private bathroom. The stylish living room, adorned with plush sofas and a flat-screen TV, sets the stage for relaxed gatherings, while the adjoining dining area comfortably seats six. A sleek, fully equipped kitchen provides everything you need for delightful meals at home. With air conditioning in every room and a seamless flow between spaces, this apartment is a haven of ease and refinement.

A quiet corridor leads to the restful sleeping quarters, where each bedroom is designed for ultimate comfort. Two feature versatile double beds (which can be separated upon request), while the third offers twin beds. A private terrace provides an intimate outdoor retreat for morning coffee or evening relaxation. Guests also enjoy access to a partner gym just 50 meters away. Located in the heart of Florence, Apartment Bardi places you within easy reach of the city's architectural wonders, charming cafés, and vibrant *piazze*—ensuring a truly unforgettable stay.

Facilities

Air-Con • Ideal for Kids • Historical Sites • City Homes & Apartments • Ideal for Teens • Has Discount • Special Offer • <1hr to Airport • Walk to Restaurant • Wi-Fi/Internet • Coffee Machine • Tourist Towns & Villages • TV • Dishwasher • Microwave • Ideal for Babies & Toddlers



Interior & Grounds

Interior

- Living room with sofa and two arm chairs with TV
- Dining table seating for six
- Kitchen fully equipped with dishwasher and dining table
- Bedroom with double bed, en-suite bathroom with shower
- Bedroom with double bed, en-suite bathroom with shower
- Bedroom with double bed, en-suite bathroom with shower and bathtub

Additional Facilities

- Crib and baby bed (on request)
- Wi-Fi Internet
- Coffee machine and microwave



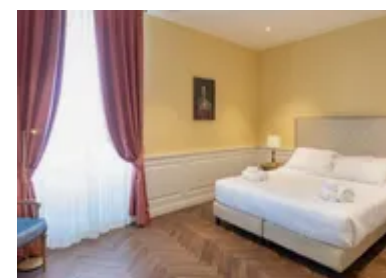
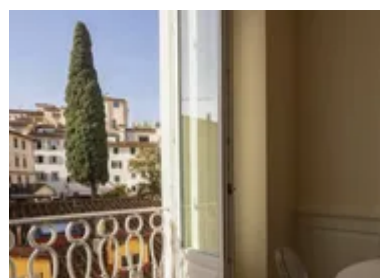
Location & Local Information

Nestled along the banks of the Arno River, Apartment Bardi sits in one of Florence's most coveted locations, just a stone's throw from the iconic *Ponte Vecchio*. This historic neighbourhood is a captivating blend of old-world charm and contemporary vibrancy, where Renaissance architecture lines the narrow streets, and lively cafés spill onto picturesque *piazze*. Stroll through the nearby *Oltrarno* district, known for its artisan workshops, boutique galleries, and hidden *trattorias* serving authentic Tuscan cuisine. The apartment's prime position allows easy access to Florence's cultural treasures, including the *Uffizi Gallery*, *Palazzo Pitti*, and the magnificent *Duomo*—all within walking distance.

Despite being in the city's heart, this area offers a more tranquil ambience, away from the busiest tourist crowds. Meander along the riverside at sunset, explore charming local markets or relax in one of the many nearby wine bars. Whether you're an art enthusiast, a food lover, or a history buff, this enchanting quarter of Florence provides an unforgettable setting for your Italian escape.

Local Amenities

Nearest Airport	Amerigo Vespucci Airport (12 km)
Nearest Bar/Pub	Le Volpi e l'Uva (550 m)
Nearest Restaurant	Lungarno 23 (130 m)
Nearest Supermarket	Sapori & Dintorni Conad (120 m)
Nearest Train Station	Firenze Santa Maria Novella (10 km)
Sightseeing	Stefano Bardini Museum (400 m)



What we love

- Apartment Bardi is a spacious and well-appointed Florentine residence offering three bedrooms, each with a private bathroom, in a prime city-centre location.
- The apartment features a comfortable living area, a fully equipped kitchen, and a private terrace, providing a practical and inviting space for guests.
- Situated just steps from the Ponte Vecchio, this home offers convenient access to Florence's cultural landmarks, dining, and shopping options.

What you should know...

- The third bedroom is accessible by going down 4 steps, which might be inconvenient for guests with mobility issues.
- The apartment is located on the 3rd floor, which could be a consideration for those with limited mobility, especially if there is no elevator.
- Only one bedroom has access to a private terrace, so not all guests may enjoy outdoor space.
- If clients require an additional bed, there is an extra charge of €80 per unit.
- If guests arrive after 23:00, the late arrival fee increases to €80. It's important for clients to plan their arrival time accordingly.
- A pet fee of €100 per pet applies, which could be a significant additional cost for clients bringing pets.
- The building offers a partnership with a fitness room located 50 meters away, but it may not be as convenient as having an on-site gym.

Terms & Conditions

- **Security deposit:** €300 charged to client's credit card before arrival and refunded two weeks after departure, subject to full inspection.
- **Arrival time:** 16:00 - 20:00. Late check-in arrival between 20.00 - 23.00 will have an extra cost at €40; and late check-in after 23.00 at €80
- **Departure time:** 06:00 - 10:00
- **Energy costs included?:** Yes, included in the rental price.
- **Linen & towels included?:** Yes, included in the rental price.
- **Pets welcome?:** On request only and with prior agreement with the owner. If accepted, a pet supplement of €100 per pet per stay will apply (paid locally).
- **Other Ts and Cs:** Extra bed at extra cost on request, payable locally in cash. Please enquire.
- **Changeover day:** Flexible.
- **End of stay cleaning available?:** Yes. However, guests are required to leave the accommodation clean, tidy and in the same condition as on their arrival. Any extra cleaning, laundry, maintenance and/or rubbish disposal required will be charged against the security deposit.
- **Smoking Allowed?:** Smoking & Vaping not permitted.
- **Minimum stay:** 3 nights. All other durations on request.
- **Heating costs included?:** Yes, included in the rental price.
- **Tax:** There is a city tax due to be paid locally which is not included in the rental rate. The amount will be confirmed by your onsite representative when you arrive.
- **Internet access?:** Wi-Fi internet connection included.