

Villa Frond

Region: United Arab Emirates **Sleeps:** 10

Overview

With the shimmering skyline of Dubai on the horizon and the Arabian Gulf lapping at your doorstep, Villa Frond offers an elegant escape on the exclusive Palm Jumeirah. Behind its private gates lies a home filled with character and warmth, bougainvillea-lined gardens, expansive living spaces, and floor-to-ceiling windows that frame the lush outdoors. The main lounge, anchored by two oversized sofas and armchairs, invites lazy mornings and long conversations, while the adjoining dining area provides the perfect setting for family feasts beneath soft pendant lighting.

Outside, a private pool glistens amidst manicured greenery, just steps from the villa's own stretch of sandy beach. Multiple terraces, shaded spots, and uninterrupted sea views set the scene for al fresco dining or sunset lounging.

The villa accommodates ten guests across five stylish bedrooms, all ensuite, including a king-size master suite with Jacuzzi bath and four queen-bedded rooms with both bathtubs and showers.

From this serene base, guests can explore all that Palm Jumeirah has to offer, from world-famous Atlantis to The Pointe's lively restaurants, all just moments away.



Facilities

Golf Villa • Air-Con • City Homes & Apartments • Private Pool • Ideal for Kids • Chef/Cook Available • Special Offer • Has Discount • Ideal for Teens • Cots (Cribs) • Walk to Beach • Maid Service Included • All Bedrooms En-Suite • Beach Nearby • Beachfront • <1hr to Airport • Parking Space • Coffee Machine • Outdoor Pursuit & Activities • Hairdryer • TV • Breakfast Available

Interior & Grounds

Ground Floor

- Living room with garden views
- Dining room with table to seat 8 guests
- Modern kitchen

First Floor

- Master Bedroom 1: King-size bed, built-in wardrobes and ensuite with Jacuzzi tub and walk-in shower
- Bedroom 2: Queen-size bed, fitted wardrobes and ensuite bathroom
- Bedroom 3: Queen-size bed, fitted wardrobes and ensuite bathroom
- Bedroom 4: Queen-size bed, fitted wardrobes and ensuite bathroom
- Bedroom 5: Queen-size bed, fitted wardrobes and ensuite bathroom

Exterior Grounds

- Private swimming pool
- Day bed
- Sun loungers
- Beachfront garden

Additional Facilities

- Italian coffee machine
- Whirlpool bathtub
- Outdoor lighting



Location & Local Information

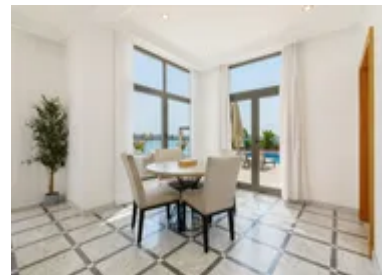
Villa Frond sits on the iconic fronds of Palm Jumeirah, where tranquillity and convenience blend effortlessly. Just a short drive or walk away, you'll find a host of attractions from the opulent Atlantis The Palm to Aquaventure Waterpark and the aquarium wonderland of The Lost Chambers. Dining options abound, from beachside bites at Club Vista Mare to gourmet fare at Nobu and other celebrated venues nearby.

For everyday essentials, the newly opened Nakheel Mall offers retail therapy, grocery delivery services, and family-friendly entertainment. When you're ready to explore further afield, the monorail and Dubai Tram provide direct access to Marina, JBR, and even Downtown Dubai's towering icons.

This palm-shaped wonder is not only a marvel of engineering but a sanctuary of comfort, style, and world-class leisure, all within arm's reach of Villa Frond.

Local Amenities

Nearest Airport	Dubai Airport (35 km)
Nearest Amusement Park	Aquaventure World (4 km)
Nearest Bar/Pub	The Underground Pub (8 km)
Nearest Beach	Palm Jumeirah (50 m)
Nearest Golf	Emirates Golf Club (Majlis) (10.5 km)
Nearest Restaurant	Énas Restaurant (5 km)
Nearest Supermarket	Waitrose & Partners (2 km)



What we love

- Direct beach access from the garden with postcard views of the Dubai skyline and Atlantis.
- Private pool surrounded by bougainvillea and landscaped gardens for peaceful lounging.
- Close proximity to Atlantis, Club Vista Mare, and the new Nakheel Mall for dining and shopping.

What you should know...

- Ongoing construction nearby may cause some daytime noise.
- Though spacious and welcoming, the villa is spread over multiple levels, which may not suit guests with mobility concerns.
- The beach is public, so while direct access is private, there may be passers-by along the shoreline.

Terms & Conditions

- **Security deposit:** €1,500 charged to client's credit card before arrival and refunded two weeks after departure, subject to full inspection.
- **Arrival time:** Between 3 - 9 pm. Late arrival after 10 pm will have an extra cost of €60.
- **Departure time:** 10 am
- **Energy costs included?:** Yes, included in the rental price.
- **Linen & towels included?:** Yes, included in the rental price.
- **Pets welcome?:** Not allowed.
- **Changeover day:** Flexible.
- **Smoking Allowed?:** Smoking & Vaping are not permitted.
- **Minimum stay:** 2 nights. All other durations on request.
- **Heating costs included?:** Not included in the rental price. Mandatory fee of €500 per week, payable locally.
- **Pool heating charge?:** Not available on this property.
- **Tax:** There is a city tax due to be paid locally, which is not included in the rental rate. The amount will be confirmed by your on-site representative upon arrival.
- **Internet access?:** Wi-Fi internet access included.
- **Pool towels included?:** Yes, included in the rental price.
- **Pool opening dates?:** Open all year.