

Apartment Barrel

Region: The South West **Sleeps:** 5

Overview

Apartment Barrel offers a graceful retreat in the heart of Georgian Bath, set within a period building overlooking Green Park. Inside, heritage details, stonework, sash windows, and alcoves blend with modern comforts like underfloor heating and contemporary bathrooms. The layout flows with ease, featuring two double bedrooms with en-suite showers and a light-filled reception room designed for relaxing or entertaining.

At the heart of the home lies a stylish kitchen and dining area, surrounded by original features and refined finishes. A rare private garden provides a peaceful escape, ideal for morning coffee or quiet afternoons. Step outside and you're moments from Bath's lively cafés, markets, and iconic landmarks, all within easy reach.



Facilities

Wi-Fi/Internet • TV • City Homes & Apartments • On-Street Parking • Easy By Train • Has Discount • Special Offer • Ideal for Babies & Toddlers • Ideal for Kids • Ideal for Teens • Walk to Restaurant • Dishwasher • Microwave • Heating • Outdoor Pursuit & Activities • Tourist Towns & Villages

Interior & Grounds

Ground Floor

- Large open plan kitchen, living and dining area
- Reception room with double sofa bed
- Cosy snug with small sofa bed and smart TV
- Master bedroom 1: Super king-size bed, ensuite bathroom
- Bedroom 2: King-size bed, ensuite bathroom
- Shower room
- Cloakroom

Exterior Grounds

- Private rear garden
- Outdoor bistro table

Additional Facilities

- Underfloor heating
- Washing machine and dryer
- Wi-Fi
- Parking



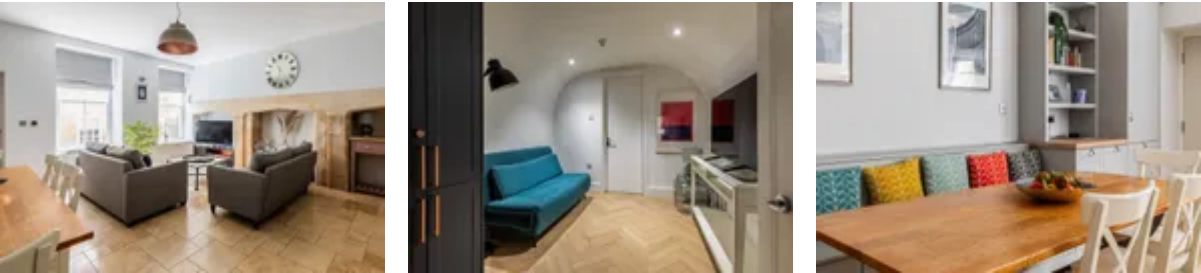
Location & Local Information

Apartment Barrel enjoys a prime location in central Bath, overlooking the serene Green Park, a leafy pocket that offers a calm retreat from the city's vibrant streets. Just steps away is Green Park Station, now a lively hub of artisan cafés, independent shops, and a weekly farmers' market perfect for local finds and fresh pastries.

Bath's most iconic sites are within easy walking distance, from the Roman Baths and Thermae Spa to the Jane Austen Centre and the architectural gems of the Royal Crescent and The Circus. Whether you're after riverside strolls, boutique shopping, cultural experiences, or dining in historic pubs, this location offers the perfect blend of heritage and modern-day charm.

Local Amenities

Nearest Airport	Bristol Airport (19 miles)
Nearest Bar/Pub	The King of Wessex (0.1 miles)
Nearest Restaurant	Emberwood (0.2 miles)
Nearest Supermarket	Sainsbury's (0.1 miles)
Nearest Train Station	Bath Train Station (0.6 miles)
Sightseeing	The Roman Baths (0.3 miles)



What we love

- The apartment's original Georgian features, from Bath stone walls to restored alcoves, create a timeless sense of character!
- A rare private garden offers a peaceful escape right in the heart of the city.
- Just a few minutes' walk from Bath's best-loved landmarks, boutique shops, and award-winning restaurants.

What you should know...

- The snug area with a small sofa bed is best suited to children or a single adult.
- As this is a period property, some ceilings may be lower in certain areas compared to modern homes.

Terms & Conditions

- **Security deposit:** £250 charged to client's credit card by the owner before/upon arrival and refunded two weeks after departure, subject to full inspection.
- **Arrival time:** 15:00 - 20:00
- **Departure time:** 10:00
- **Energy costs included?:** Yes, included in the rental price.
- **Linen & towels included?:** Yes, included in the rental price.
- **Pets welcome?:** Not allowed.
- **Changeover day:** Flexible.
- **Smoking Allowed?:** Smoking & vaping are not permitted.
- **Minimum stay:** 2 - 3 nights, depending on season. All other durations on request.
- **Heating costs included?:** Yes, included in the rental price.
- **Tax:** Tourist tax not applicable.
- **Internet access?:** Wi-Fi internet connection included.