

Casa Palacete 1

Region: Portimao **Sleeps:** 4

Overview

Tucked away in the heart of Portimão, Casa Palacete 1 is an artistic haven that invites you to slow down and soak in its carefully curated charm. As you step inside, you're met with an air of quiet elegance – crisp white walls, floors, and ceilings set the stage for the colourful, emotive works of Dutch artist Meinke Flesseman. It feels less like a holiday home and more like wandering through a living gallery, with every corner offering something to catch the eye.

The living spaces flow effortlessly from the cosy lounge area to a bright dining nook and a sleek, well-equipped kitchen – perfect for relaxed evenings, shared meals, and quiet moments surrounded by inspiring art. With two bedrooms and two bathrooms, it comfortably accommodates four guests, offering both comfort and a sense of creative serenity.

Outside, the charm continues. A private terrace is perfect for slow mornings with coffee or laid-back evenings under the stars. While there's no pool, the atmosphere more than makes up for it – think peaceful rooftop vibes, the scent of citrus on the air, and the gentle hum of life nearby.

Step beyond the front door and you're instantly immersed in the rhythm of Portimão. Cafés, boutiques, galleries, and the sparkling coastline are all just a short stroll away.

Facilities

Air-Con • On-Street Parking • Coffee Machine • Walking/Hiking Paths • Wi-Fi/Internet • Hairdryer • Cots (Cribs) • Laptop Friendly Workspace • Walk to Village • Instagrammable • Modern • Townhouse/Apartment • Ideal for Kids • Ideal for Teens • Walk to Restaurant • <1hr to Airport • Dishwasher • Microwave • Smart TV • High Chair(s) • Fenced Grounds • Outstanding Landscapes • Outdoor Pursuit & Activities • Tourist Towns & Villages



Interior & Grounds

The Villa

Ground Floor

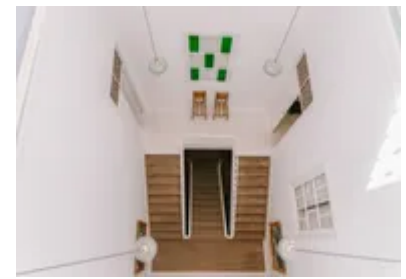
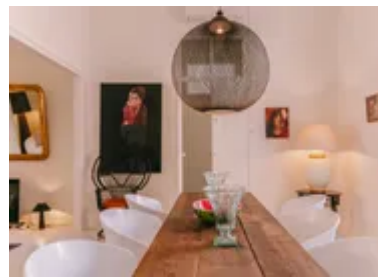
- Open-plan living area with lounge and dining space
- Fully equipped kitchen
- Bedroom 1: Double bedroom with ensuite bathroom
- Bedroom 2: Double bedroom
- Bathroom with shower

Exterior

- Rooftop patio with views over Portimão's rooftops
- Outdoor dining area

Additional Facilities

- Air conditioning
- Wi-Fi
- Smart TV
- Hairdryer
- Iron and ironing board
- Towels and linens provided
- Artistic interior featuring original works by Meinke Flesseman



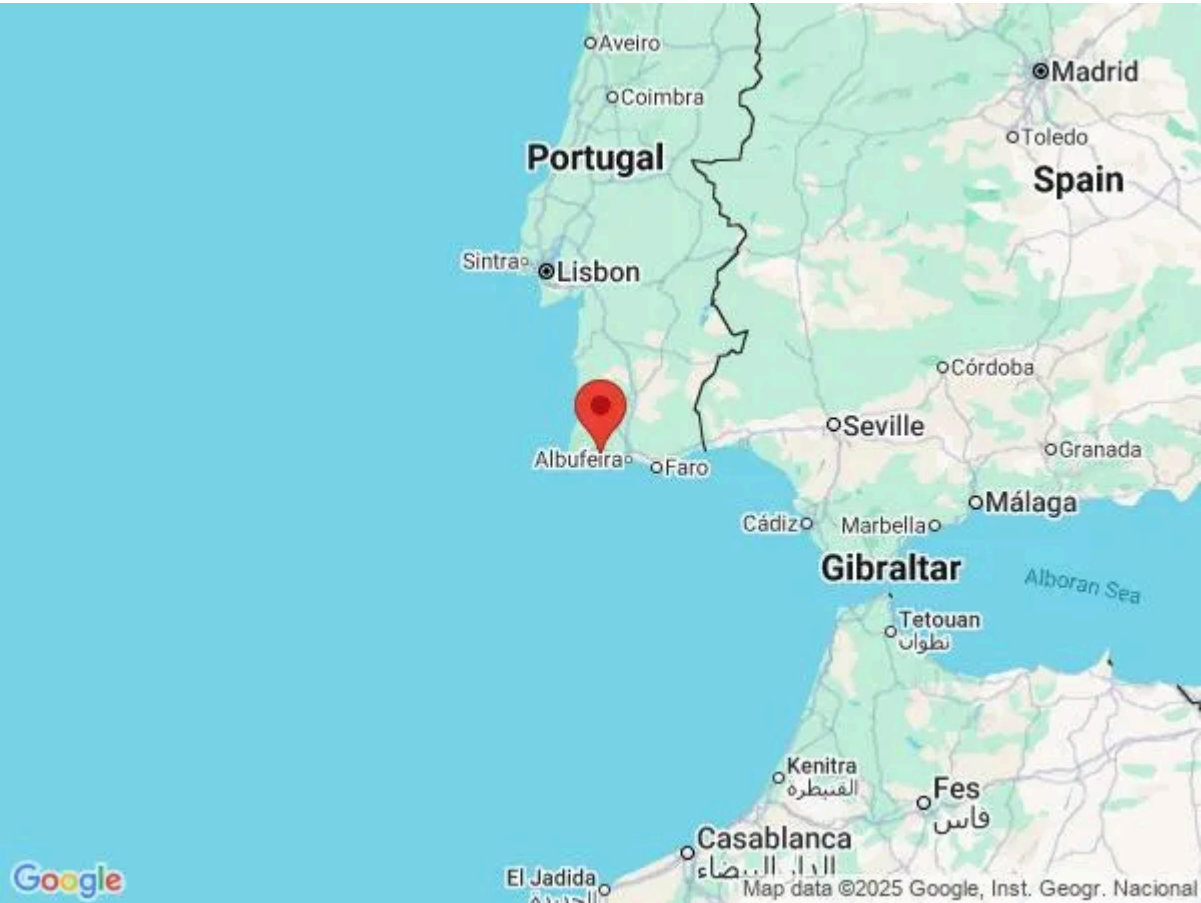
Location & Local Information

Nestled in the vibrant heart of Portimão, Casa Palacete 1 places you right at the centre of one of the Algarve’s most characterful towns. Step outside and you’re immediately surrounded by a maze of cobbled streets, lively squares, and traditional whitewashed buildings. Within walking distance, you’ll find a wide array of local amenities – from bustling cafés and authentic Portuguese restaurants to bakeries, markets, and boutique shops. Just a short stroll away lies the iconic waterfront promenade, perfect for people-watching or catching the golden glow of sunset over the Arade River.

Portimão is steeped in maritime history, once thriving as a fishing and shipbuilding hub. Today, its heritage lives on in the Museu de Portimão, set within a restored 19th-century cannery. The nearby Praia da Rocha, with its dramatic cliffs and golden sands, offers a striking contrast to the town’s historic centre, making it an ideal spot for beach lovers and culture seekers alike.

Local Amenities

Nearest Airport	Faro Airport (70 km)
Nearest Beach	Praia da Rocha (3 km)
Nearest Golf	Alto Golf Course (5 km)
Nearest Restaurant	PTM DownTown Brunch&Cocktails (140 m)
Nearest Supermarket	Mini Mercado (300 m)
Nearest Town/City	Portimao (100 m)



What we love

- A unique, gallery-like home adorned with original artwork by renowned artist Meinke Flesseman.
- Ideally located in the heart of Portimão, with cafés, markets, and the riverside promenade just a stroll away.
- A peaceful rooftop patio offering a charming spot for sunset drinks above the town's rooftops.
- Perfect for art lovers and culture seekers looking for a stylish, adults-only retreat.

What you should know...

- This property is designed as an adults-only space – guests must be 12 years of age or older.
- There is no swimming pool on site, though the beach and riverside are within easy reach.

Terms & Conditions

- **Security deposit:** €500 charged to the client's credit card as a pre-authorisation at least 2 weeks prior to arrival and refunded two weeks after departure, subject to a full inspection.
- **Arrival time:** 4 pm
- **Departure time:** 10 am
- **Energy costs included?:** Yes, included in the rental price.
- **Linen & towels included?:** Yes, included in the rental price.
- **Pets welcome?:** Not allowed.
- **Other Ts and Cs:** The local property manager will send you a registration form to be completed, with all travellers/guests details, before your arrival date. Please ensure this form is completed at least one week before your arrival.

- **Changeover day:** Flexible
- **End of stay cleaning available?:** Extra €110 per week, to be paid with the balance. However, guests are required to leave the accommodation clean, tidy and in the same condition as on their arrival. Any extra cleaning, laundry, maintenance and/or garbage disposal required will be charged against the security deposit.
- **Smoking Allowed?:** Smoking & Vaping are not permitted.
- **Minimum stay:** 7 nights. All other durations on request.
- **Tax:** Tourist Tax of €2 per person per night for over 13's (max. 7 nights) is not included in the rental price and will need to be paid prior arrival via a link direct from the supplier. Please note that this amount is only applicable for bookings from 01/04 to 31/10. The tax will lower to €1 for bookings from 01/11 to 31/03.
- **Internet access?:** Wi-Fi internet access included.
- **Property Licence Number:** 147410/AL