

The Walled Garden

Region: East Of England Sleeps: 6

Overview

The Walled Garden is an elegant Grade II*-listed home nestled amidst the stunning grounds of the estate, offering a tranquil escape for up to six guests. Thought to have been the Head Gardener's or Steward's residence, this charming house is flooded with natural light, thanks to its towering south-facing windows that provide lovely views of both its private walled garden and the main walled garden beyond.

The heart of the house is the hand-painted kitchen and dining room, perfect for relaxed family meals or entertaining friends. The inviting sitting room features a cosy open fire, creating a warm atmosphere for unwinding after a day of exploration. The interiors are beautifully designed, with high ceilings, a grand master bedroom, and a classical marble bathroom, complemented by two additional bedrooms, each with an ensuite shower room.

Outside, the large private walled garden is ideal for outdoor dining or simply relaxing in the sunshine. Guests also have access to the estate's main gardens, adding an extra layer of serenity to this enchanting retreat.

Facilities

Villa • Ideal for Kids • Walking/Hiking Paths • Historical Sites • Ideal for Xmas/NY • Maid Service Available • Chef/Cook Available • Special Offer • Has Discount • Ideal for Teens • Pets on Request • Cots (Cribs) • All Bedrooms En-Suite • <1hr to Airport • Heritage Collection • Parking Space • Wi-Fi/Internet • Rural Location • Coffee Machine • Outstanding Landscapes • Outdoor Pursuit & Activities • Hairdryer • Indoor Games • DVD • Hot Tub • Dishwasher • Microwave • Electric Car Charger • Smart TV • Working Fireplace/Woodburner • New Villas 2025 • Kid-friendly excursions • Catering Available • Board games • On-Site Concierge • Xbox/Playstation/Wii • Ideal for Babies & Toddlers • Stair gates • High Chair(s) • Fenced Grounds



Interior & Grounds

The Walled Garden

Ground Floor

- Fully equipped, handmade and hand-painted kitchen with Rangemaster cooker and kitchen table for 6 people.
- Sitting room with discreet TV. Sir John Soane marble fireplace and pineapple cast-iron register grate for open fires.

First Floor

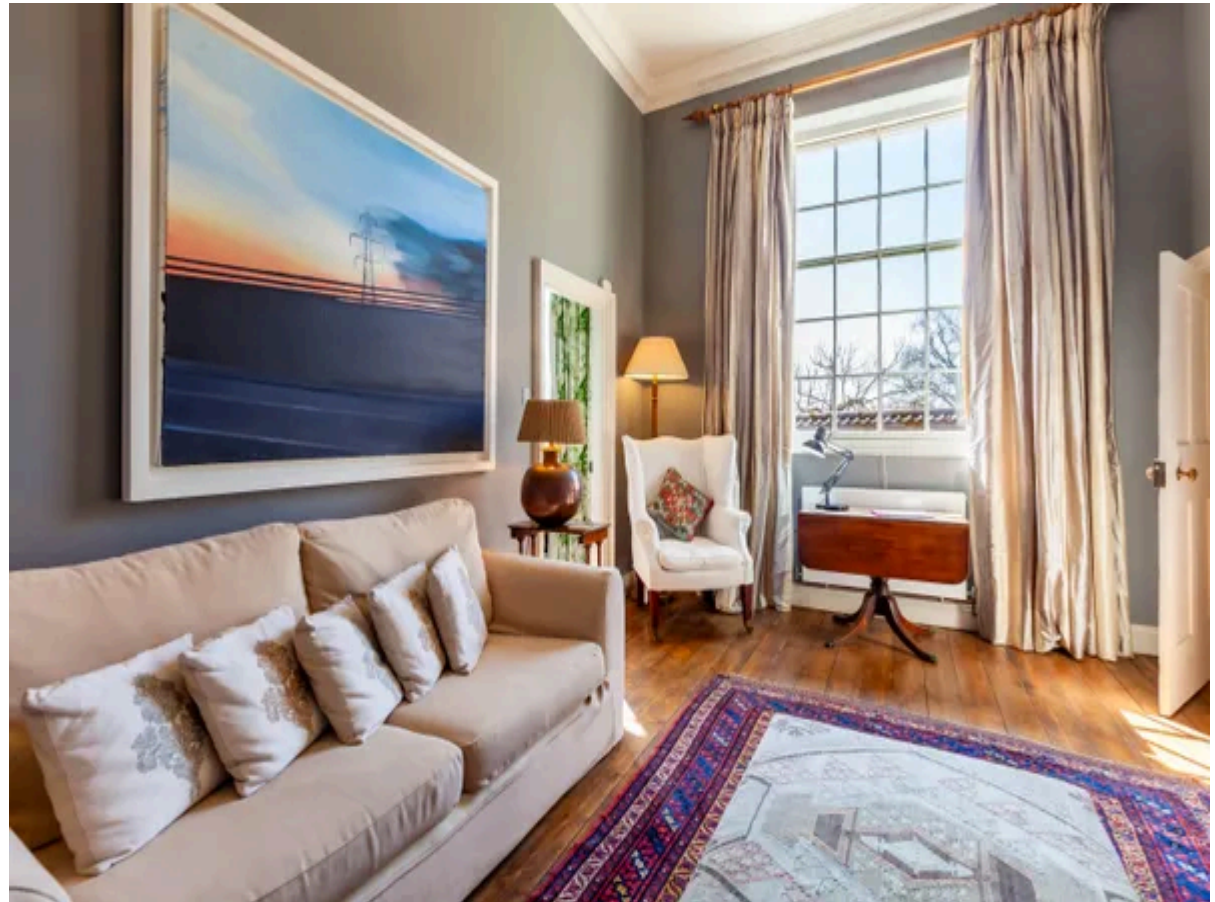
- Master Bedroom 1: Double bed and luxurious marble master bathroom
- Bedroom 2: Double bed with ensuite
- Bedroom 3: Single bed with ensuite

Exterior

- Large walled garden
- Dining area
- Barbecue
- Wood-fired hot tub
- Access to walled gardens
- Private parking for up to 3 cars

Additional Facilities

- Vispring beds with Egyptian cotton linen and goose down pillows and duvets.
- TV with Freeview and DVD player in the Sitting Room.
- Board games, X Box and Bluetooth speaker on request.



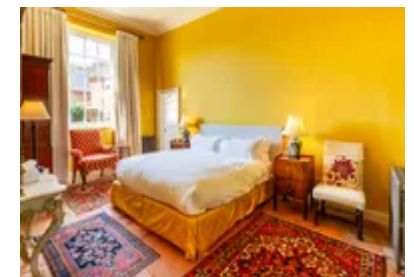
Location & Local Information

The Walled Garden is set within the stunning grounds of a grand estate, offering a serene retreat surrounded by 500 acres of parkland. This tranquil location is perfect for those seeking a peaceful countryside escape, while still being close to local amenities. The charming market town of Holt is just a short drive away, where you can enjoy independent shops, galleries, and cosy cafés. For a taste of history, the nearby Blickling Hall, a grand Jacobean stately home, offers tours of its magnificent interiors and landscaped gardens.

Nature lovers will appreciate the estate's extensive walking trails, while the North Norfolk coast, with its picturesque beaches at Sheringham and Cromer, is within easy reach. These beaches are perfect for a day of sandcastle building or rock pooling. The area is also known for its rich history, from medieval villages to the grandeur of stately homes, providing plenty of opportunities for both relaxation and exploration.

Local Amenities

Nearest Airport	Norwich International Airport (25 km)
Nearest Train Station	Roughton Road Train Station (14.5 km)
Nearest Town	Aylsham (9 km)
Nearest City	Norwich (44 km)
Nearest Bar/Pub	The Saracens Head Pub (1 km)
Nearest Restaurant	The Blind Pig (9 km)
Nearest Shop	SPAR, Corpusty (8 km)
Nearest Supermarket	Tesco Superstore (12 km)



Nearest Beach

**Overstrand Beach
(16 km)**

What we love

- Enjoy serene views of the historic walled gardens and access to 500 acres of stunning parkland, perfect for peaceful walks and exploration.
- The charming market town of Holt is just a short drive away, offering independent shops, cosy cafés, and a glimpse of local culture and history.
- Immerse yourself in local heritage with easy access to nearby stately homes like Blickling Hall, offering fascinating tours of grand interiors and beautiful gardens.
- The estate's private walled garden is an enchanting space for outdoor dining, perfect for summer evenings or morning coffee surrounded by nature.

What you should know...

- The Walled Garden sits within a larger estate, so while it offers privacy, guests may occasionally encounter other visitors enjoying the grounds.
- The property features original period features and large sash windows — beautiful, but not ideal for very young children without supervision.
- Mobile phone signal can be patchy in this rural location, though Wi-Fi is available throughout the house.

Terms & Conditions

- **Security deposit:** £200 charged to client by the owner one month before/upon arrival and refunded two weeks after departure, subject to full inspection.
- **Arrival time:** 3:00 pm
- **Departure time:** 10:00 am
- **Energy costs included?:** Yes, included in the rental price.
- **Linen & towels included?:** Yes, included in the rental price.
- **Pets welcome?:** Yes, a maximum of 2 dogs are welcome on request, and are subject to an additional £50 charge per pet per stay.
- **Changeover day:** Flexible
- **End of stay cleaning:** Standard changeover clean included in the price. Guests are required to leave the accommodation clean, tidy and in the same condition as on their arrival. Any extra cleaning, laundry, maintenance and/or rubbish disposal required will be charged against the security deposit.
- **Smoking Allowed?:** No smoking or vaping
- **Minimum stay:** 2 or 3 nights
- **Heating costs included?:** Yes, included in the rental price.
- **Pool towels included?:** Yes, included in the rental price.