

Boudon Loft

Region: Paris Sleeps: 6

Overview

Escape to an elegant Parisian retreat in the heart of the 16th arrondissement. This refined apartment welcomes up to six guests with two tranquil bedrooms, a chic living room featuring a sofa bed, and thoughtful design details throughout. Original parquet floors, period mouldings, and curated artwork create a timeless atmosphere, while the open kitchen and sunlit dining area invite slow mornings and shared meals. After a day of sightseeing, unwind in the private garden, soak in the jacuzzi, or rejuvenate in the hammam.

Perfectly positioned just a short walk from the Eiffel Tower and Seine riverbanks, the apartment places you steps from the city's most iconic landmarks, fine dining, and vibrant markets. Whether you're sipping coffee in a quiet corner or strolling through nearby avenues, this home offers a rare blend of space, style, and serenity. It's more than just a place to stay – it's where memorable Paris moments begin.

Facilities

Wi-Fi/Internet • Ground Floor Bed & Bath • Air-Con • On-Street Parking • Washing Machine • TV • City Homes & Apartments • Coffee Machine • Hairdryer • New Villas 2025 • Ideal for Babies & Toddlers • Ideal for Kids • Ideal for Teens • Pets on Request • Hot Tub • Walk to Restaurant • <1hr to Airport • Tumble Dryer • Dishwasher • Microwave • Heating • Tourist Towns & Villages



Interior & Grounds

Ground Floor

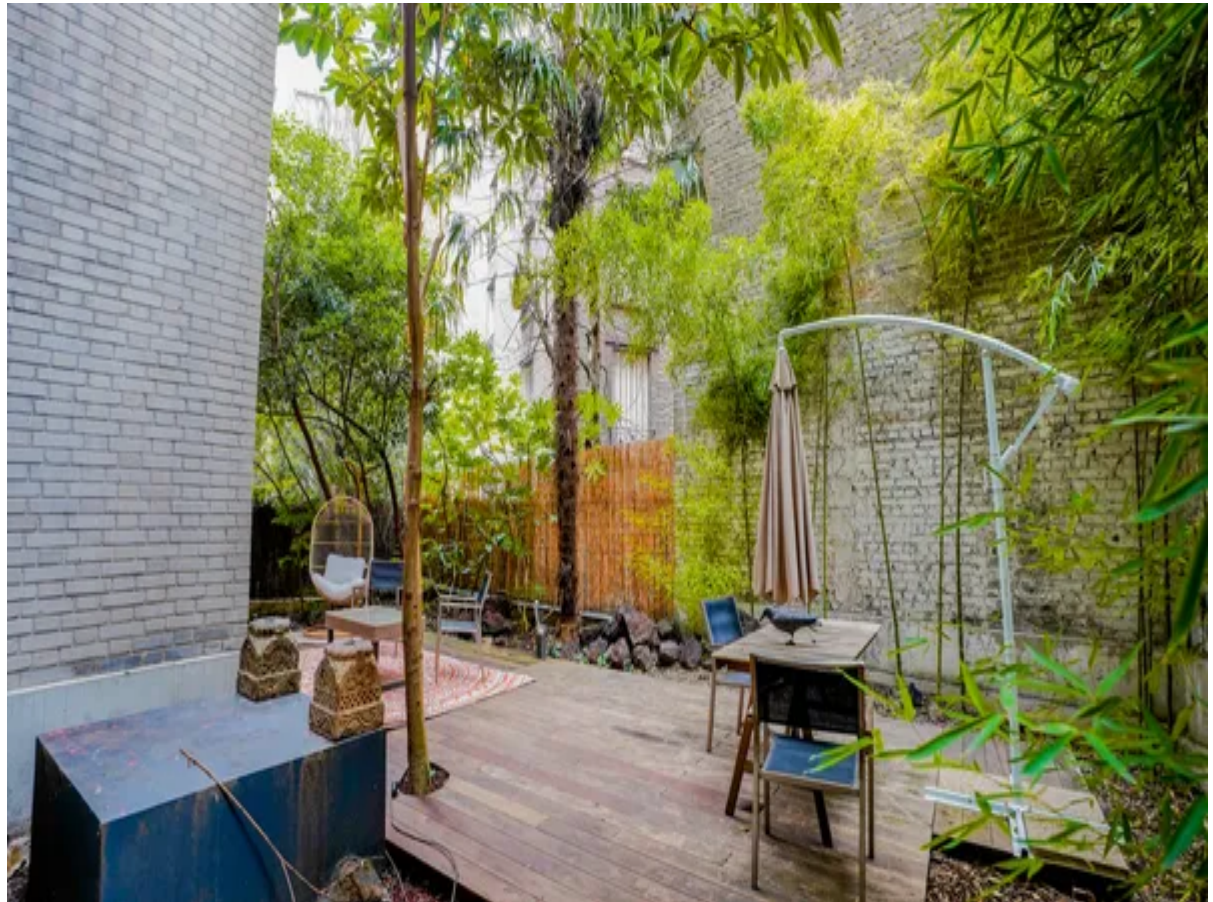
- Ample living room with comfortable seating, TV and access to a patio
- Separated dining area for 6 people
- Well equipped kitchen with breakfast bar
- Bathroom with bath tub
- Shower room
- Bedroom with king size bed and fireplace
- Bedroom with a sofa bed and fireplace
- Bedroom with queen size bed

Exterior Grounds

- Ample patio and garden area
- Outdoor dining
- Garden furniture

Additional Facilities

- Wi-Fi connection
- Indoor hot tub
- Central heating
- Hair dryer
- Bathroom toiletries
- Washing machine
- Dryer
- Dishwasher
- Coffee machine
- Barbecue



Location & Local Information

Tucked within Paris’s prestigious 16th arrondissement, this neighbourhood blends timeless elegance with a calm, residential atmosphere. Tree-lined boulevards, grand Haussmannian architecture, and discreet charm define the area, making it a favourite among Parisians seeking a more refined pace of life. Just minutes from the apartment, the Eiffel Tower rises above the Seine, while leafy strolls along the riverbanks or through the Champ de Mars offer moments of quiet escape in the city’s heart.

The 16th is rich in cultural gems and everyday delights. Explore the nearby Trocadéro gardens, pop into the Musée Marmottan or the Palais de Tokyo, and browse local markets and patisseries frequented by residents. With excellent transport links and Vélib’ stations close by, the city’s landmarks are at your fingertips. Yet the real charm lies in the local cafés, boutiques, and shaded squares that give the area its distinctively Parisian rhythm —sophisticated, slow-paced, and full of hidden treasures.

Local Amenities

Nearest Airport	Paris Airport (37 km)
Nearest Train Station	Michel-Ange - Auteuil Metro (650 m)
Nearest Restaurant	The Crying Tiger Paris 16 (800 m)
Nearest Bar/Pub	Pane e Olio Taverna (550 m)
Nearest Supermarket	Carrefour City (900 m)
Sightseeing	Musée Marmottan Monet (2 km)



What we love

- This well-appointed apartment comfortably sleeps up to six guests, offering two serene bedrooms and a separate living room with a high-quality sofa bed
- Guests can enjoy exclusive access to a private garden, a year-round jacuzzi, and a modern hammam—ideal for unwinding after a day in the city
- Situated in the elegant 16th arrondissement, the property is just a short walk from the Eiffel Tower, the Seine riverbanks, and various cafés, shops, and museums

Terms & Conditions

- **Security deposit:** €650 charged to client's credit card by the owner before/upon arrival and refunded two weeks after departure, subject to full inspection.
- **Arrival time:** 3 pm
- **Departure time:** 11 am
- **Energy costs included?:** Yes, included in rental price.
- **Linen & towels included?:** Yes, included in rental price.
- **Pets welcome?:** On request only and with prior agreement with the owner.
- **Changeover day:** Flexible.
- **End of stay cleaning available?:** Not included in the rental price, extra €180 to be paid with the balance. However, guests are required to leave the accommodation clean, tidy and in the same condition as on their arrival. Any extra cleaning, laundry, maintenance and/or garbage disposal required will be charged against the security deposit.
- **Smoking Allowed?:** Smoking & Vaping are not permitted.
- **Minimum stay:** 3 nights. All other durations on request.
- **Heating costs included?:** Yes, included in rental price.
- **Tax:** Paris city tax is €5.20 per person, per night. City tax is not included in the rental rate and is payable locally.
- **Internet access?:** Wi-Fi internet access included.