

Bastide Du Laurier Rose

Region: Languedoc **Sleeps:** 13

Overview

Welcome to Bastide Du Laurier Rose – an exceptional 19th-century estate where timeless French elegance meets the soul of the Mediterranean, close to Montpellier's city centre. Originally built on the remains of a 17th-century château watchtower, this historic bastide once served the Comte de Castelnau and played host to key figures in Montpellier's cultural rise. Its legacy endures today as a refined residence that blends heritage, modern comfort, and nature in equal measure.

Set within vast private parkland featuring century-old trees native to the city, the bastide offers a rare sense of seclusion while remaining perfectly equipped for holidays with family or friends. Guests can unwind across various terraces, enjoy the gorgeous swimming pool and jacuzzi, or entertain beneath the shade of the pool house with barbecue.

Inside, the bastide offers a series of light-filled, flexible spaces. Two comfortable salons and a contemporary kitchen-dining area combine to allow guests to truly relax whether watching TV, playing table football or drinking good Languedoc wine into the evening.

The upper floor comprises six attractively furnished guest bedrooms, sleeping up to 13 guests and one additional child (plus four more guests using sofa-beds if required). Each room features bespoke furniture, premium hotel-grade bedding, and modern amenities including air conditioning and Wi-Fi. All six bathrooms are private or en suite and come equipped with plush robes, slippers and baths or showers.

Concierge services can be arranged such as daily breakfast, catering options, transfers and taxis, bike hire and massages, all to enhance your stay in every way.



Bastide Du Laurier Rose enjoys a prime setting in a desirable and historic neighbourhood just a short drive or cycle from the city centre (it is also possible to walk to a local tram or bus stop for direct access to Montpellier). Landmarks such as the Jardin des Plantes and the historic Faculty of Medicine (over 800 years old) are within reach, while the surrounding woodlands and nearby river offer a tranquil counterpoint to the city buzz.

Whether you're seeking an unforgettable family escape or a gathering with good friends, Bastide Du Laurier Rose promises a stay rich in elegance, authenticity, and Mediterranean charm.

Facilities

Wi-Fi/Internet • Golf Nearby • Air-Con • Tennis Nearby • Table Tennis • Villa • Laptop Friendly Workspace • Easy By Train • Indoor Games • Transfers Available • Catering Available • Breakfast Available • Board games • Swings • Private Pool • Ideal for Kids • Ideal for Teens • <1hr to Airport • Washing Machine • Dishwasher • Coffee Machine • Hairdryer • TV • Outdoor Games • Table Football • Working Fireplace/Woodburner • Heating • Parking Space • Canoeing/Kayaking • Walking/Hiking Paths • Wine Tasting • Cycling • Horse Riding • Fishing • Outstanding Landscapes • Outdoor Pursuit & Activities • Tourist Towns & Villages • Historical Sites

Interior & Grounds

Bastide Interiors

Main Floor (via steps)

- Entrance hall
- Lounge with three sofas and large table with chairs
- Lounge with large sofa, armchairs, fireplace (winter use only, please give notice before using to ensure hatches are opened and safety checks carried out), TV, table football and small bar
- Kitchen-diner, fully-equipped including two fridges, two coffee machines, oven, hob, kettle, breakfast bar and large dining table (for 8-10 guests)
- Laundry room with washing machine
- Orangery (only open on request for events/seminars) with large table for 14 guests, piano and video projector with screen

The ground floor is also home to a service bedroom/bathroom to be used exclusively by an event coordinator or bastide site concierge, if required. Not available to guests.

Upstairs

- Bedroom 1 with queen-size double bed (160cm) and separate private bathroom with shower and WC
- Bedroom 2 with queen-size double bed (160cm) and separate room (via sliding door) with double sofa-bed (140cm) and high single cabin bed above. Separate private bathroom with bath and WC
- Bedroom 3 with queen-size double bed (160cm) and separate room with double sofa-bed (140cm). En suite bathroom with shower and WC
- Bedroom 4 with queen-size double bed (160cm) and en suite bathroom with bath and WC
- Bedroom 5 with queen-size double bed (160cm) and en suite bathroom with shower and WC
- Bedroom 6 with king-size double bed (180cm), additional single bed, dressing room and en suite bathroom with bath and WC



Outside Grounds (5000m2)

- Swimming pool (11x7m, depth: 3m). Open approximately May to September
- Jacuzzi (open all year round)
- Pool house with outdoor shower, al-fresco dining area, barbecue and sink
- Three terraces with small tables and chairs
- Large garden/grounds (5000m2 including century-old native trees)
- Parking (10-20 spaces)

Other Facilities

- Audio system and speakers
- Bathrobes and slippers

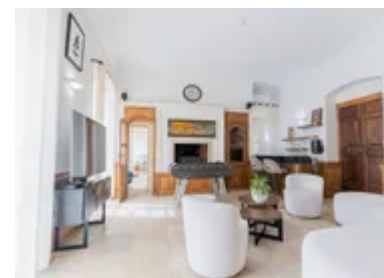
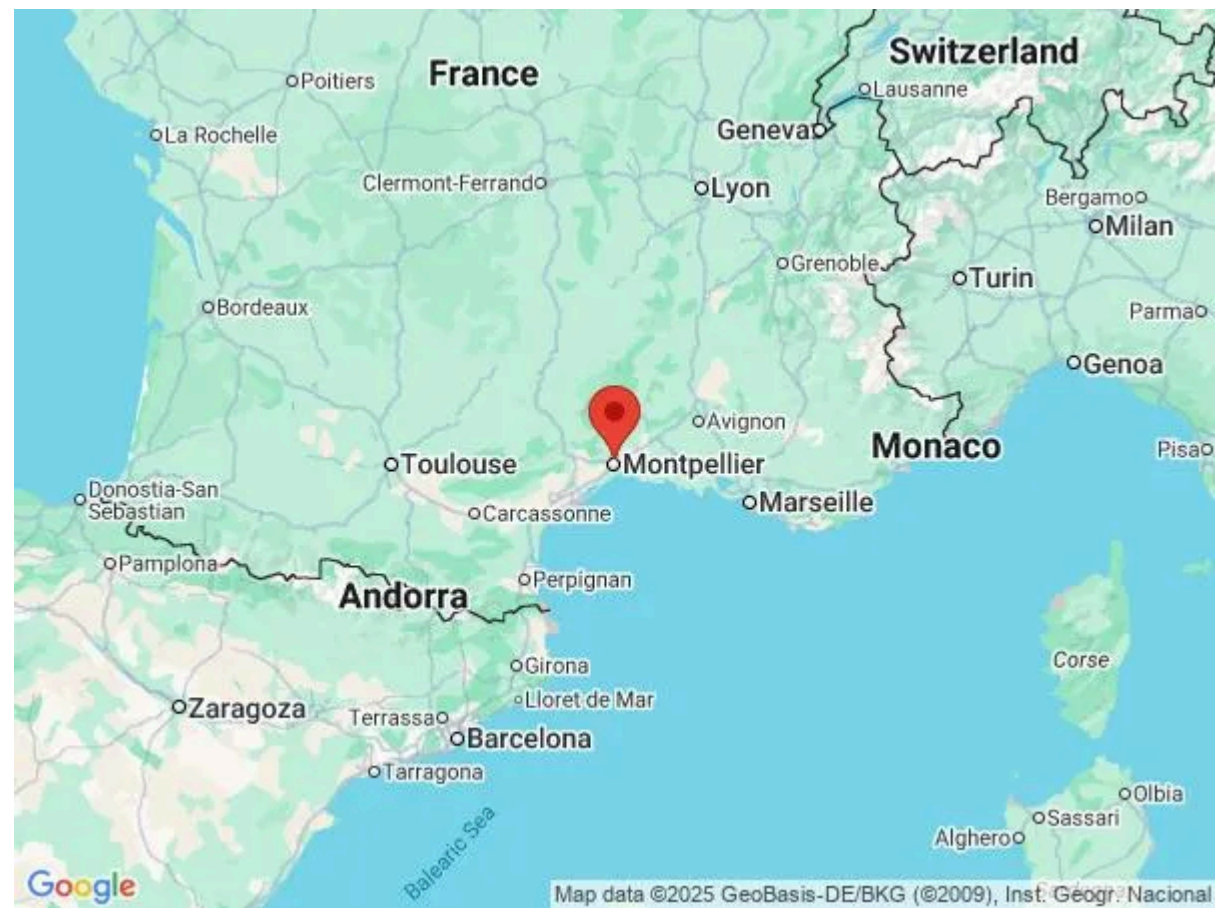
Location & Local Information

Set against the sun-drenched backdrop of southern France, Montpellier is a vibrant and sophisticated city that effortlessly blends historic charm with contemporary flair. Bastide du Laurier Rose is located north-east of the city centre, not far from the Lez River, with useful amenities just a short drive away in the Castelnau-le-Lez neighbourhood. To reach Montpellier, it's around a 10-minute drive, a 15-minute cycle ride or walk to the local tram stop (a 15-minute walk) or bus stop (a 6-minute walk) for direct public transport to the city centre.

At Montpellier's heart lies the elegant Place de la Comédie, where grand 19th-century architecture and lively café terraces set the tone for a stylish city break. Wander through the medieval streets of the Écusson—Montpellier's old town—and discover hidden courtyards, boutique shops, and architectural gems such as the Cathédrale Saint-Pierre and the Arc de Triomphe. Art lovers will be drawn to the Musée Fabre, one of France's most celebrated fine art museums.

For shopping and entertainment, head to the Polygone Centre (4km), a bustling hub of fashion and dining just a stone's throw from the historic core. Venture a little further and you'll find Odysseum (7km), a dynamic retail and leisure complex home to cinemas, restaurants, an aquarium, and even an indoor skydiving centre—perfect for families or a rainy afternoon. When it's time to unwind, the coast calls: just 20 minutes away, the beach town of Palavas-les-Flots (19km) offers a lively promenade, and the gentle rhythms of the Mediterranean.

Montpellier also makes an excellent base for day trips that showcase the best of the Occitanie region. The fishing port of Sète (42km), often dubbed the "Venice of Languedoc", charms with its canals, seafood restaurants, vast sandy beaches and coastal walks. To the north, Saint-Guilhem-le-Désert (47km) enchants visitors with its medieval abbey and dramatic limestone gorges, while the fortified town of Aigues-Mortes (35km) and the nearby Camargue reveal salt flats, flamingos, and wild white



horses. Art and history lovers will relish a trip to Arles (80km), famed for its Roman amphitheatre and Van Gogh connections.

Closer to home, the shores of the Étang de Thau near Mèze (40km) offer oyster tastings and tranquil views across the lagoon. Meanwhile, wine lovers will find themselves in paradise amidst the vineyards of Languedoc, where cellar doors open to reveal bold reds, crisp whites, and sparkling crémants. With so much to see, sip, and savour, Montpellier invites you to slow down and indulge in the art of southern French living.

Local Amenities

Nearest Airport	Montpellier-Méditerranée Airport (12km)
Nearest Airport 2	Nîmes Airport (61km)
Nearest Airport 3	Béziers Cap d'Agde Airport (74km)
Nearest Train Station	Montpellier Saint-Roch (4.5km)
Nearest City	Montpellier (3.5km)
Nearest Restaurant	Castelnau-le-Lez area (2km)
Nearest Supermarket	Grand Frais (2.5km)
Nearest Golf	Golf Montpellier Fontcaude (14km)
Nearest Tennis	Pierre Rouge (3.5km)
Nearest Beach	Carnon Plage (18km)

What we love

- A historic 19th-century bastide with a rich heritage – once graced by Montpellier's cultural elite
- Elegant interiors with two lounges, a sleek kitchen-dining space, and inviting bedrooms all with air-conditioning and private bathrooms
- Relax in style with a private swimming pool, jacuzzi, and shaded pool house with barbecue – perfect for long sunny days
- Surrounded by mature parkland with native trees, offering tranquil relaxation just minutes from central Montpellier
- Concierge services available, including breakfast, catering, transfers, massages, and more to elevate your stay

What you should know...

- The bastide sleeps up to 13 guests plus one additional child across six bedrooms – please see the 'Layout' tab for full details on the bed configurations.
- Two of the bedrooms also feature double sofa-beds for an additional four guests, if required - please enquire.
- There is a seventh bedroom (on the ground floor) that is not available to guests – it may be used by a member of concierge staff if needed (for example, if guests require an early breakfast). Otherwise, no staff live on site.
- The Orangery is only available on request with advance notice – it can be used for workshops or seminars.

Terms & Conditions

- **Security deposit:** €5000 charged to client's credit card by Oliver's Travels as a pre-authorisation at least 2 weeks prior to arrival and refunded two weeks after departure, subject to full inspection.

- **Arrival time:** 4.00 p.m.

- **Departure time:** 10.00 a.m.

- **Energy costs included?:** Yes.

- **Linen & towels included?:** Yes.

- **Pets welcome?:** Not allowed.

- **Other Ts and Cs:** Weddings, stag/hen parties and other special events are not allowed. Seminars/workshops are on request only and subject to prior arrangement with the owner and additional charges. The bastide sleeps up to 13 guests plus one additional child across six bedrooms – please see the 'Layout' tab for full details on the bed configurations. Two of the bedrooms also feature double sofa-beds for an additional four guests, if required - please enquire. There is a seventh bedroom (on the ground floor) that is not available to guests – it may be used by a member of concierge staff if needed (for example, if guests require an early breakfast). Otherwise, no staff live on site. The Orangery is only available on request with advance notice – it can be used for events, workshops or seminars.

- **Changeover day:** Saturday (July/August) or flexible at other times.

- **End of stay cleaning available?:** Yes, standard changeover clean included. Guests are required to leave the accommodation clean, tidy and in the same condition as on their arrival. Any extra cleaning, laundry, maintenance and/or rubbish disposal required will be charged against the security deposit.

- **Smoking Allowed?:** Not allowed.

- **Minimum stay:** 7 nights (July and August) or 2 nights at other times.

- **Heating costs included?:** Yes. If you wish to use the fireplace (winter period only), please give advance notice so that the owners can arrange for the hatches to be opened.

- **Tax:** French Visitors Tax payable locally in cash (typically costs €1-€10 per adult per night - please enquire if exact amount is required).

- **Pool towels included?:** Yes.

- **Pool opening dates?:** The pool is open approximately May to September. Please note that pool opening dates are subject to local weather conditions and pool maintenance requirements and that cooler months may not be suitable for swimming.