

Tera Estate

Region: Grenada Sleeps: 42

Overview

Set across seven acres on its own private peninsula, Tera Estate is a remarkable retreat perched above the serene waters of Mount Hartman Bay. Home to three architecturally distinctive villas—Sundara, Socca, and Marula—the estate offers a total of Fifteen bedrooms, blending bold design with laid-back island living. With only one group hosted at a time, guests enjoy full exclusivity, making it an ideal choice for large celebrations, destination weddings, and unforgettable gatherings.

Each villa features spacious suites, elegant interiors, private terraces, and floor-to-ceiling views that frame the bay, reef, and lush hills beyond. The estate's interiors offer a mix of contemporary comforts and characterful Caribbean charm, while outdoor spaces invite you to slow down and savour the surroundings.

Wander barefoot across the estate's wraparound beach, cool off in the vast infinity pool with swim-up bar and Jacuzzi, dine beneath a gazebo, or gather around the fire pit under the stars. There's a private dock, water park, gym, and generous entertaining areas—everything you need for celebrating life's special moments in style. Just ten minutes from the airport, yet tucked away in your own secluded paradise, Tera Estate is where wild beauty meets warm hospitality.

Facilities

Private Pool • Tennis Nearby • Scuba Diving • Paragliding • Ideal for Kids • Boat Trips • Ideal for Xmas/NY • Watersports • Villa • Fishing • Air-Con • Walk to Beach • Has Discount • Special Offer • Ideal for Teens • Instagrammable • All Bedrooms En-Suite • Beach Nearby • Ground Floor Bed & Bath • Beachfront • <1hr to Airport • Parking Space • Wi-Fi/Internet • Waterfront • Seaview • Outstanding Landscapes • Coffee Machine • Outdoor Pursuit & Activities • Tourist Towns & Villages • TV • Boat Access • Indoor Games • Gym/Fitness Room • Hot Tub • Safety Deposit Box •



Interior & Grounds

The Estate

Villa Sundara

Main House

- Dais Suite: Super King-size bedroom with ensuite, private balcony and views of the bay
- Rose Suite: Super King-size bedroom with ensuite, private balcony and views of the bay
- Jacuzzi Suite: Super King-size bedroom with ensuite, private balcony and views of the bay
- Blue Suite: Super King-size bedroom with ensuite

Top Reef View Suites:

- Reef Suite: Super King sized bedroom with ensuite bathroom, shared balcony, and views of the bay
- Odeon Suite: Super King sized bedroom with ensuite bathroom, shared balcony and views of the bay
- Black Suite: Super King sized bedroom with ensuite bathroom, shared balcony, and views of the bay
- Separate kitchen available for use by a nanny or your personal staff for any strict dietary requirements

Folly Tower

- Bedroom 8: Super king-size bed with en-suite

Villa Socca

Ground Floor

- Bedroom 1: Super King-size bedroom, large ensuite bathroom with outdoor shower and direct access to the swimming pool
- Bedroom 2: Super King-size bedroom, large en-suite bathroom with outdoor shower and access to a private garden
- Fully equipped kitchen
- Sitting room with doors opening to the beach
- Bathroom
- Private laundry room

First Floor

- Bedroom 3: Super King-size bedroom, large ensuite bathroom with outdoor shower
- Bedroom 4: Super King-size bedroom, large ensuite bathroom with outdoor shower

Villa Marula

Ground Floor

- Bedroom 1: Super king-size bed with ensuite and private balcony
- Large open plan kitchen, opening onto a sitting room with a sit up bar
- Large laundry room

First Floor

- Bedroom 2: Super king-size bed with ensuite and private balcony
- Bedroom 3: Super king size bed (or twins beds) with ensuite and private balcony
- Bedroom 4: Super king-size bed (or twins beds) with ensuite and private balcony



Exterior

- Wrap-around, white sandy beach (man-made)
- Small white sand gently sloping natural beach
- Large private and fully enclosed garden
- Infinity edge swimming pool, jacuzzi, and gazebo
- Boats and private dock for water sports (please enquire)

Additional Facilities

- Private ensuite bathroom in every room
- Air conditioning in all bedrooms
- Luxurious toiletries, fluffy white towels and bathrobes
- 1000 thread count Egyptian cotton sheets
- Pillow menu available (goose down or non-allergenic options)
- Private mini-bar fridges as well as tea and coffee facilities in each room
- Large screen smart TV's in all rooms
- Outdoor movie screen for "movies under the stars"
- Fire pit on the beach
- Specialty theme nights and poker table (please enquire)
- Special events, music groups, steel pan band, and fireworks display (please enquire)

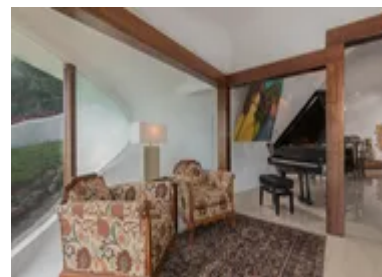
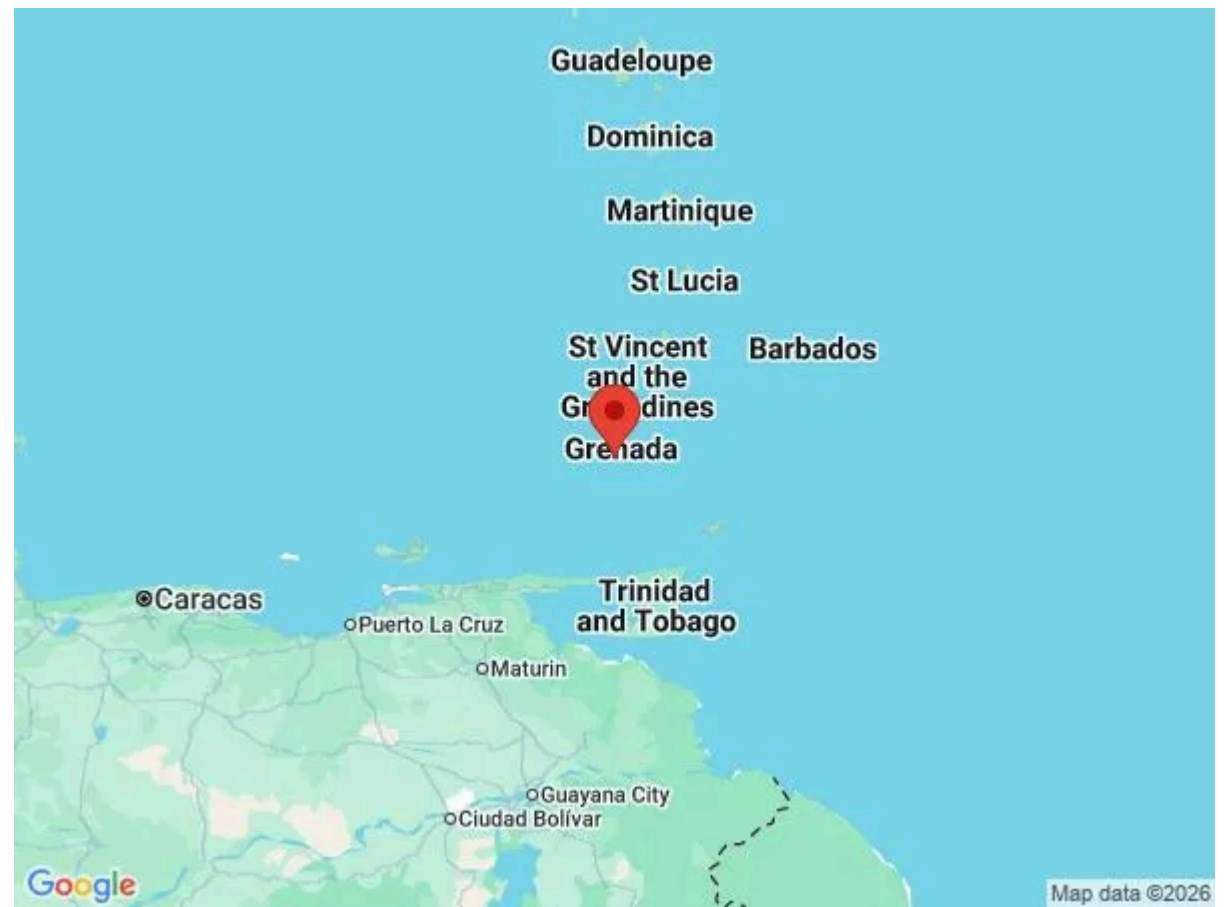
Location & Local Information

Tera Estate is tucked into one of the most picturesque corners of Grenada, set on a private peninsula overlooking Mount Hartman Bay. Just a short ten-minute drive from Maurice Bishop International Airport, the estate is ideally placed for easy access without compromising on privacy. The surrounding area is peaceful and scenic, with vibrant coral reefs and turquoise waters right on your doorstep—perfect for paddleboarding, snorkelling or a slow cruise from the private dock.

Nearby, the charming capital of St George's offers colourful markets, historic forts and lively waterfront dining. Grenada is known as the 'Spice Island' for good reason—nutmeg, cinnamon and cocoa fill the air in the island's lush interior, where guests can explore plantations, waterfalls, and rainforest trails. Whether you're seeking a cultural wander through town, a beach day with fresh seafood, or an adventure inland, Tera Estate is perfectly positioned to experience the best of Grenada's natural beauty and local flavour.

Local Amenities

| | |
|---------------------|---|
| Nearest Airport | Maurice Bishop International Airport (5 km) |
| Nearest Bar/Pub | Sand Bar & Grill (1 km) |
| Nearest Beach | Lance Aux Epines Beach (1 km) |
| Nearest Golf | Grenada Golf Club (6 km) |
| Nearest Restaurant | Da Panda (500 m) |
| Nearest Supermarket | Cauls Food Store (1 km) |
| Nearest Tennis | Next Door (Walking Distance) |
| Nearest Town/City | St. George's (10 km) |



What we love

- Set on a private peninsula, Tera Estate offers breathtaking panoramic views of Mount Hartman Bay, ideal for unforgettable sunsets and serene moments by the water
- Perfect for celebrations, the estate's vast grounds, private beach, and multiple outdoor entertaining spaces make it an exceptional venue for weddings and events
- The estate is just ten minutes from the airport, making it easily accessible while remaining tucked away in its own secluded paradise
- With private dock access, water sports, and a beachside fire pit, Tera Estate is a true retreat for both relaxation and adventure
- Meals and house drinks included

What you should know...

- The estate is set on a private peninsula with steep terrain in some areas, which may not be suitable for guests with mobility challenges
- Kids should be supervised at all times
- Tera Estate consists of Villa Sundara (<https://www.oliverstravels.com/caribbean/grenada/villa-sundara/>), Villa Socca (<https://www.oliverstravels.com/caribbean/grenada/villa-socca/>), and Villa Marula (<https://www.oliverstravels.com/caribbean/grenada/villa-marula/>)

Terms & Conditions

- **Security deposit:** \$10,000 given as a cash advance for any extras you may want booked while at the property. Remaining funds returned within 7 days of departure.
- **Arrival time:** 4 pm.
- **Departure time:** 10 am.
- **Energy costs included?:** Yes, included in the rental price.
- **Linen & towels included?:** Yes, included in the rental price.
- **Pets welcome?:** Not allowed.
- **Changeover day:** Flexible.
- **End of stay cleaning:** Standard changeover clean included in the price. Guests are required to leave the accommodation clean, tidy and in the same condition as on their arrival. Any extra cleaning, laundry, maintenance and/or rubbish disposal required will be charged against the security deposit.
- **Smoking Allowed?:** Smoking & Vaping not permitted.
- **Minimum stay:** 5 nights.
- **Heating costs included?:** Not available.
- **Pool heating charge?:** Not available.
- **Tax:** Tax is included in the rental price.
- **Internet access?:** Yes, included in the rental price.
- **Pool towels included?:** Yes, included in the rental price.