

Rooftop Saudade

Region: Portugal **Sleeps:** 8

Overview

Rooftop Saudade is a beautifully crafted four-bedroom home tucked away in the contemporary neighbourhood of Saldanha. As you step inside, you're greeted by an airy, sun-drenched space, where wood-panelled walls and floor-to-ceiling windows frame enchanting glimpses of Lisbon's rooftops.

The apartment artfully merges modern comforts with charming traditional touches, from its bespoke plywood kitchen fitted into the eaves to the traditional windows and shutters that nod to the past. The open-plan living area, bright and welcoming, spills onto a delightful balcony — an inviting spot to sip morning coffee or unwind with a glass of wine at sunset. Two serene bedrooms boast king-size beds and ensuite bathrooms, while the other two feature twin beds and share a spacious, stylish bathroom.

Outside, the private terrace offers a peaceful urban escape, floating high above the bustle below. Nestled amongst the rooftops, Rooftop Saudade sits in a lively, well-connected part of Lisbon, where local cafés, leafy avenues, and boutique shops beckon just beyond your door.

Facilities

Wi-Fi/Internet • Instagrammable • Modern • Townhouse/Apartment • Ideal for Kids • Ideal for Teens • Walk to Restaurant • <1hr to Airport • Washing Machine • Tumble Dryer • Dishwasher • Microwave • Coffee Machine • TV • Walking/Hiking Paths • Wine Tasting • Outstanding Landscapes • Outdoor Pursuit & Activities • Tourist Towns & Villages • Historical Sites



Interior & Grounds

The Apartment

Interior

- Open-plan living space with kitchen, dining and lounge area
- Bespoke plywood kitchen fitted into sloping eaves
- Living space with floor-to-ceiling windows and access to balcony
- Glass bi-fold doors leading to private terrace
- Bedroom 1: King-size bed and en suite bathroom
- Bedroom 2: King-size bed and en suite bathroom
- Bedroom 3: Twin beds
- Bedroom 4: Twin beds
- Spacious shared bathroom

Exterior

- Private balcony overlooking Lisbon rooftops

Additional Facilities

- Wi-Fi
- Washing machine and dryer
- Bluetooth sound system
- Books



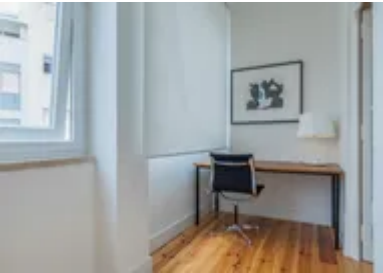
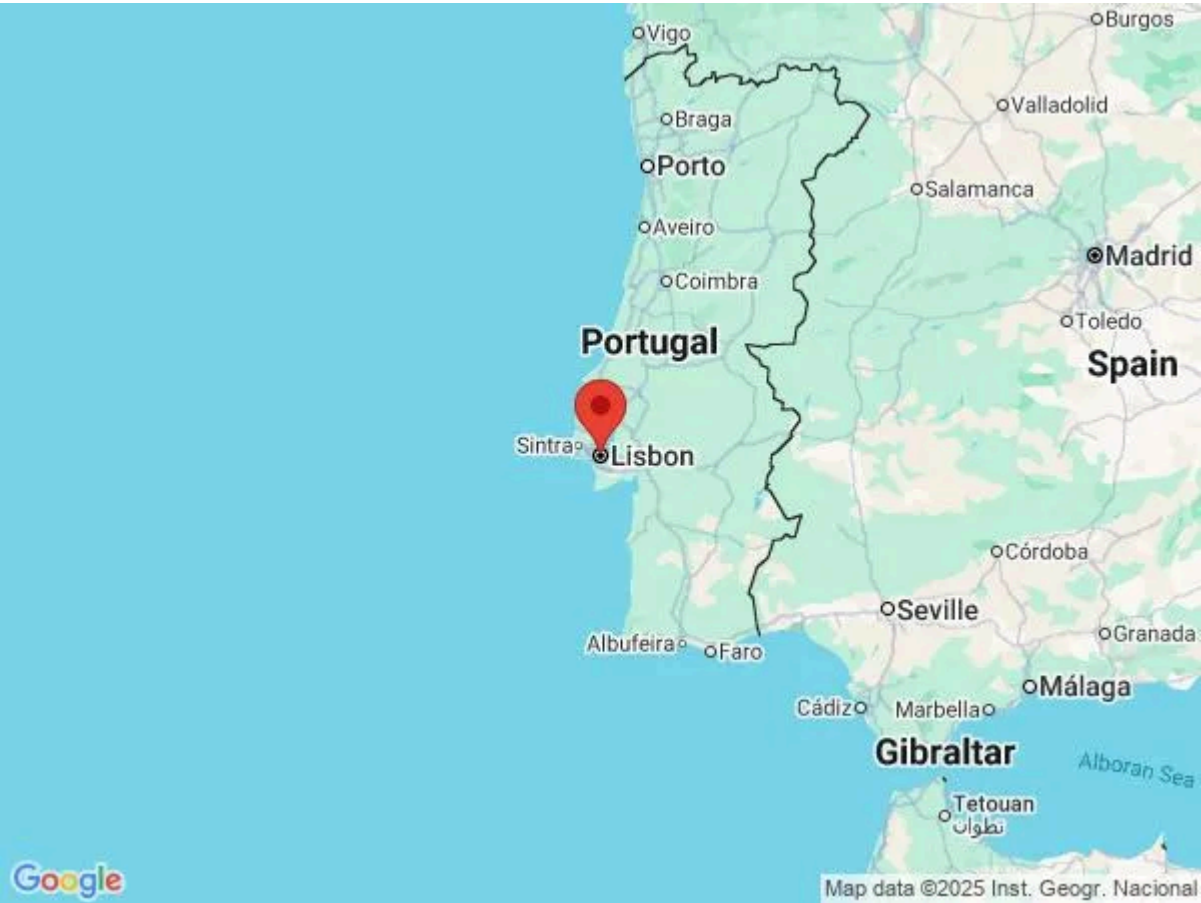
Location & Local Information

Set in the heart of Saldanha, Rooftop Saudade enjoys a prime spot in one of Lisbon's most vibrant and elegant neighbourhoods. A hub of cafés, leafy boulevards, and grand historic buildings, Saldanha offers the perfect balance between local charm and city convenience. Stroll down wide, tree-lined avenues dotted with boutique shops, bakeries, and traditional restaurants serving authentic Portuguese dishes. The area is known for its blend of classic architecture and modern flair, with landmarks such as the stunning Praça do Duque de Saldanha just a short walk away. Excellent transport links make it easy to explore further, although nearby you'll find beautiful parks, cultural centres, and art galleries to discover on foot.

Saldanha reflects Lisbon's historic love affair with elegance and innovation, once a 19th-century expansion of the city that still carries an air of sophistication today. It's an inviting neighbourhood for both leisurely wanderings and vibrant city life.

Local Amenities

Nearest Airport	Lisbon Airport (5 km)
Nearest Restaurant	Block House (500 m)
Nearest Supermarket	Lidl (200 m)
Nearest Beach	Algés Beach (10 km)



What we love

- Situated in the vibrant Saldanha neighbourhood, you're just steps away from charming cafés, boutique shops, and historic landmarks.
- The open-plan living space, with its chic design and bespoke plywood kitchen, creates an inviting, stylish atmosphere perfect for unwinding after a day of exploration.
- A short stroll from the apartment, explore local cultural gems, art galleries, and traditional Portuguese eateries, all while soaking in the city's rich history.

What you should know...

- It is strictly prohibited to make any noise after 10pm or any kind of party. This type of behaviour will be sanctioned by the non-return of the deposit.
- After taking the elevator up to the last floor, there is still a short set of 12 stairs.
- One of the bedrooms has a bunk bed, best suited to children or guests happy to climb a ladder into the bed.

Terms & Conditions

- **Security deposit:** No security deposit is required for this villa. Please be aware that guests are still required to leave the accommodation clean, tidy and in the same condition as on their arrival.
- **Arrival time:** 4 pm
- **Departure time:** 10 am
- **Energy costs included?:** Yes, included in the rental price.
- **Linen & towels included?:** Yes, included in the rental price.
- **Pets welcome?:** Not allowed.
- **Changeover day:** Flexible
- **End of stay cleaning available?:** Extra €110 paid to OT. However, guests are required to leave the accommodation clean, tidy and in the same condition as on their arrival. Any extra cleaning, laundry, maintenance and/or garbage disposal required will be charged against the security deposit.
- **Smoking Allowed?:** Smoking & Vaping are not permitted.
- **Minimum stay:** 7 nights. All other durations on request.
- **Tax:** Tourist Tax of €4 per person per night for over 13's (max. 7 nights) is not included in the rental price and will need to be paid to OT prior arrival.
- **Internet access?:** Wi-Fi internet access included.
- **Property Licence Number:** 110966/AL