

Doodle Townhouse

Region: Lisbon Sleeps: 7

Overview

Doodle Townhouse is a thoughtfully designed haven nestled atop the rooftops of Lisbon. Set over a spacious layout for up to seven guests, this airy three-bedroom, three-bathroom residence balances clean modern lines with warm, organic textures. As you wander through the open-plan living area, you're greeted by the soft light that pours in from charming dormer windows, revealing panoramic views of the iconic Tagus River and the tiled rooftops of the historic Alfama district. The living room invites you to sink into a plush cream sofa, flanked by caramel-toned armchairs, with a stylish fireplace and abstract mural adding a playful artistic flair.

The sleek kitchen is fully equipped for any culinary adventure, flowing into a sun-drenched dining space perfect for long, chatty meals. Thoughtful touches like built-in shelving and ambient lighting lend both function and atmosphere. Outside, shuttered windows open up to postcard-perfect vistas, from narrow cobbled streets to Lisbon's bright skyline stretching toward the river.

Tucked in a central yet peaceful neighbourhood, the townhouse sits just moments from bustling eateries, trams, and cultural gems. Whether sipping coffee beside a window desk or watching the golden hour from the comfort of your sofa, Doodle Townhouse captures the soul of Lisbon with style and heart.

Facilities

Air-Con • City Homes & Apartments • Historical Sites • Walk to Village • Ideal for Kids • Wine Tasting • Cots (Cribs) • Special Offer • Has Discount • Ideal for Teens • Instagrammable • Modern • <1hr to Airport • Parking Space • Walk to Restaurant • Wi-Fi/Internet • Washing Machine • Outstanding Landscapes • Coffee Machine • Hairdryer • Outdoor Pursuit & Activities • Tourist Towns & Villages • TV • Laptop Friendly Workspace • Tumble Dryer • Dishwasher • Microwave • New Villas 2025 • High Chair(s)



Interior & Grounds

Interior

- Open plan living and dining room with balcony
- Fully equipped, galley kitchen
- Bedroom 1: Double bed with ensuite bathroom
- Bedroom 2: Double bed with ensuite bathroom
- Bedroom 3: Three Single beds
- Bathroom

Exterior

- Balcony

Additional Facilities

- Wi-Fi
- Free parking
- Washing machine and dryer
- Sound system
- Air-conditioning
- Lift



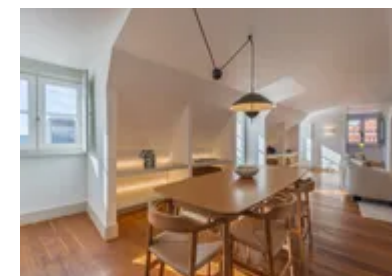
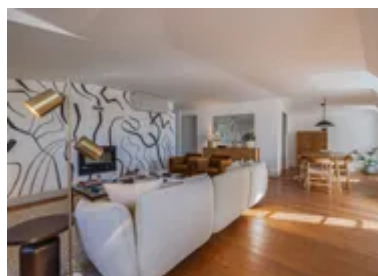
Location & Local Information

Perched in the heart of Lisbon's storied Alfama district, Doodle Townhouse places you right at the centre of one of the city's most atmospheric neighbourhoods. Step outside and you're instantly surrounded by a labyrinth of cobbled streets, colourful facades, and the distant sounds of Fado music drifting from tucked-away taverns. This is old Lisbon at its finest, a place where history lives in every corner, from Moorish alleyways to centuries-old churches.

The townhouse is just moments from traditional bakeries, local markets, and family-run restaurants serving up bacalhau and vinho verde. São Jorge Castle, with its sweeping views, is a short walk away, while the lively Feira da Ladra flea market offers vintage treasures twice a week. Hop on the iconic Tram 28 to explore further or stroll down to the riverside for relaxed cafés and sunset vistas. Here, you'll find a rich blend of heritage and daily Lisbon life, all just outside your door.

Local Amenities

Nearest Airport	Lisbon Airport (10 km)
Nearest Bar/Pub	Pub Português (900 m)
Nearest Beach	Algés Beach (9 km)
Nearest Restaurant	RUMI Lisboa – Restaurant & Bar (220 m)
Nearest Supermarket	Supermercado Chiado (230 m)
Nearest Train Station	Cais do Sodre (850 m)
Sightseeing	Lisbon Cathedral (2 km)



What we love

- Set high above the city, the townhouse offers sweeping views of the Tagus River and Lisbon's terracotta rooftops from nearly every room!
- Just a short walk from São Jorge Castle, local markets, and authentic Fado bars in the heart of the historic Alfama district.
- Bright, open-plan interiors with custom wall art, a statement fireplace and elegant modern finishes throughout.

What you should know...

- The townhouse is located on an upper floor, there is a lift for access convenience.
- Due to the central location in a historic neighbourhood, occasional street noise may be heard, especially during local festivals.

Terms & Conditions

- **Security deposit:** Credit card details are required 2 weeks prior to departure for pre-authorisation.
- **Arrival time:** 4 pm
- **Departure time:** 10 am
- **Energy costs included?:** Yes, included in the rental price.
- **Linen & towels included?:** Yes, included in the rental price.
- **Pets welcome?:** Not allowed.
- **Changeover day:** Flexible.
- **End of stay cleaning:** Extra €123, payable to Oliver's Travels with the balance payment. Guests are required to leave the accommodation clean, tidy and in the same condition as on their arrival. Any extra cleaning, laundry, maintenance and/or rubbish disposal required will be charged against the security deposit.
- **Smoking Allowed?:** Smoking & Vaping are not permitted.
- **Minimum stay:** 7 nights. All other durations on request.
- **Tax:** Tourist Tax of €4 per person per night for over 13's (max. 7 nights) is not included in the rental price and will need to be paid to OT prior arrival.
- **Internet access?:** Wi-Fi internet access included.