

Apartment Zane

Region: Veneto **Sleeps:** 5

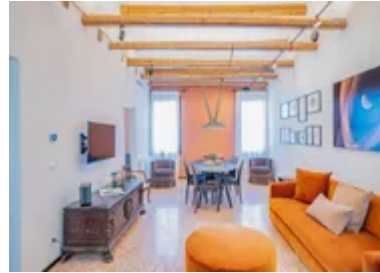
Overview

Apartment Zane sits on the sun-filled southern edge of Campo San Stin, offering a stylish and well-balanced retreat for up to five guests. Set across three floors with its own entrance, it features two elegant double bedrooms with terrazzo floors and beamed ceilings, a single bedroom, three bathrooms, a guest loo, and a separate laundry room. The top floor reveals a bright living and dining area with vibrant accents, a sleek U-shaped kitchen, and views across the peaceful campo.

Located moments from the Frari Basilica and Scuola Grande di San Rocco, the apartment is surrounded by cicchetti bars, artisan eateries and local shops. While close to major sights, it remains in a quieter, residential pocket where everyday Venetian life continues at an easy pace. Air-conditioning throughout, Wi-Fi, and stylish furnishings make Apartment Zane a relaxed and well-connected base for exploring the heart of Venice.

Facilities

Air-Con • Washing Machine • City Homes & Apartments • Coffee Machine • Hairdryer • Historical Sites • TV • Wi-Fi/Internet • Easy By Train • New Villas 2025 • Ideal for Kids • Ideal for Teens • Walk to Restaurant • <1hr to Airport • Dishwasher • Microwave • Outdoor Pursuit & Activities • Tourist Towns & Villages



Interior & Grounds

Ground Floor

- Entrance Hallway
- Laundry room with washing machine and dryer

First Floor

- Bedroom 1: Double bed with ensuite bathroom
- Bedroom 2: Double bed with ensuite bathroom
- Bedroom 3: Single daybed

Second Floor

- Open plan, contemporary living space
- Sitting and dining area
- Semi-separate u-shape kitchen
- Guest bathroom

Additional Facilities

- Air-conditioning
- Hair dryer
- Coffee machine



Location & Local Information

Apartment Zane enjoys a prime position on Campo San Stin, a peaceful sunlit square moments from the Grand Frari and Scuola Grande di San Rocco. Ideally placed for exploring San Polo, Santa Croce and Dorsoduro, this setting offers an authentic glimpse of local life while staying close to major landmarks and convenient waterbus connections.

Guests are within easy reach of everything from Michelin-starred dining at Wisteria to relaxed cicchetti spots like Il Vizietto and La Bottiglia. Cultural highlights include nearby toy museums, musical venues such as Palazzetto Bru Zane, and seasonal events in Campo San Polo. With artisan shops, supermarkets, and the San Tomà and San Silvestro vaporetto stops all close at hand, plus a nearby traghetto crossing to San Marco, Apartment Zane is a serene and well-connected base for discovering Venice.

Local Amenities

Nearest Airport	Venice Airport (10 km)
Nearest Bar/Pub	Vizietto (40 m)
Nearest Restaurant	Frary's (100 m)
Nearest Supermarket	CONAD (300 m)
Nearest Train Station	Venezia Santa Lucia (700 m)
Sightseeing	Basilica S.Maria Gloriosa dei Frari (200 m)



What we love

- Prime position on a peaceful local campo, yet just steps from key sights like the Frari and Scuola Grande di San Rocco.
- Light-filled top-floor living space with contemporary furnishings and vibrant colour accents!
- Within walking distance of local hotspots for food, wine, art, music and more.

What you should know...

- The property is arranged over three floors with no lift, so may not be suitable for guests with mobility concerns.
- The top-floor living area and kitchen are accessed via internal marble stairs.

Terms & Conditions

- **Security deposit:** €700 charged to client's credit card as a pre-authorisation two weeks before arrival and refunded two weeks after departure, subject to full inspection.
- **Arrival time:** 3 - 8 pm
- **Departure time:** 11 am
- **Energy costs included?:** Yes, included in the rental price.
- **Linen & towels included?:** Yes, included in the rental price.
- **Pets welcome?:** Not allowed.
- **Changeover day:** Flexible.
- **End of stay cleaning available?:** Not included in the rental price, extra €190 to be paid with the balance due.
- **Smoking Allowed?:** Smoking & Vaping not permitted.
- **Minimum stay:** 3 - 5 nights, depending of season. All other durations on request.
- **Heating costs included?:** Not available on this property.
- **Tax:** There is a city tax due to be paid locally which is not included in the rental rate. The amount will be confirmed by your onsite representative when you arrive.
- **Internet access?:** Wi-Fi internet connection included.